

# Classroom Dollars and Proposition 301 Results

## Palominas Elementary School District

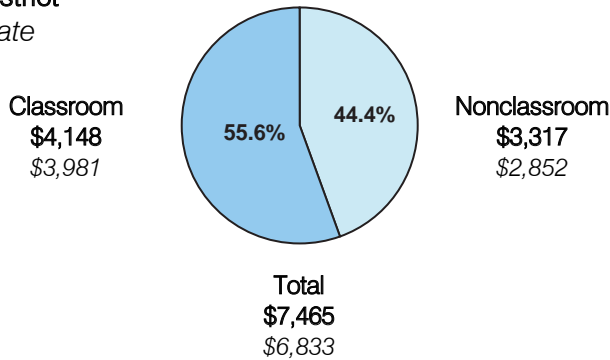
Cochise County

District size: Medium  
 Students attending: 1,053  
 Number of schools: 3  
 Number of certified teachers: 64

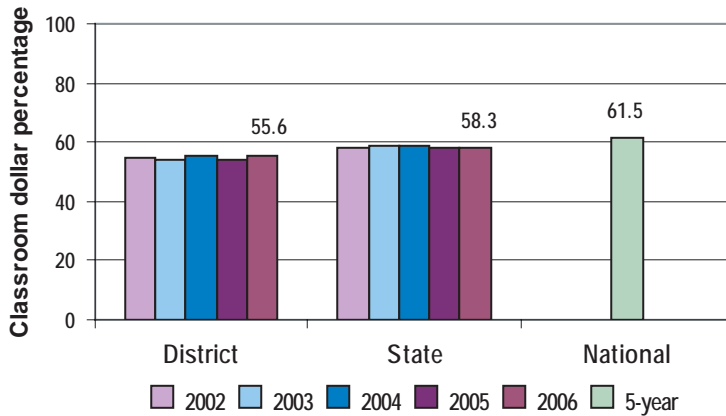
### Classroom Dollars

Fiscal year 2006 averages per pupil

District  
 State



### 5-year comparison



### Expenditures by function

|                       | District |      |      |      |      | State 2006 | National 5-year |
|-----------------------|----------|------|------|------|------|------------|-----------------|
|                       | 2002     | 2003 | 2004 | 2005 | 2006 |            |                 |
| Classroom dollars     | 54.9     | 54.2 | 55.7 | 54.3 | 55.6 | 58.3       | 61.5            |
| Nonclassroom dollars: |          |      |      |      |      |            |                 |
| Administration        | 12.1     | 10.5 | 9.9  | 11.5 | 10.1 | 9.4        | 11.0            |
| Plant operations      | 11.0     | 12.0 | 11.5 | 10.7 | 10.8 | 11.2       | 9.6             |
| Food service          | 4.1      | 3.9  | 3.9  | 3.9  | 4.0  | 4.7        | 3.9             |
| Transportation        | 11.4     | 11.7 | 11.5 | 12.1 | 12.5 | 4.2        | 4.0             |
| Student support       | 4.8      | 5.0  | 4.9  | 4.9  | 4.2  | 7.2        | 5.1             |
| Instruction support   | 1.7      | 2.7  | 2.6  | 2.5  | 2.8  | 4.8        | 4.7             |
| Other                 |          |      |      | 0.1  |      | 0.2        | 0.2             |

### Comparative Information

|                           | District |          |          | State 2006 |
|---------------------------|----------|----------|----------|------------|
|                           | 2004     | 2005     | 2006     |            |
| Student/teacher ratio     | 16.5     | 15.8     | 16.5     | 17.7       |
| Average teacher salary    | \$36,788 | \$36,199 | \$36,707 | \$42,967   |
| Average years' experience | 10.3     | 10.3     | 10.2     | 8.3        |

Classroom dollar ranking: 107 of 229 districts.

### Proposition 301

#### District-reported 2006 results

##### Teacher pay

- On average, each teacher earned an additional \$5,383 in salary, and each speech pathologist and counselor earned between \$1,890 and \$3,498, which included performance pay for fiscal year 2005 performance.

##### Performance

- The District accomplished its goals, which were the same as the prior fiscal year's goals and were based on district performance.
- Students demonstrated 1 year's academic progress.
- Teachers met twice yearly with the curriculum director to monitor student progress.
- Teachers increased the number of parental contacts through phone calls, conferences, surveys, and newsletters.

##### Menu

- Monies were used solely to increase eligible employee compensation.