

Paradise Valley Unified School District

Maricopa County

Efficiency peer groups 1 and T-5, Achievement peer group 2¹

Legislative district(s): 15, 20, 23, and 28

District size, location:

Very large, City

Students attending:

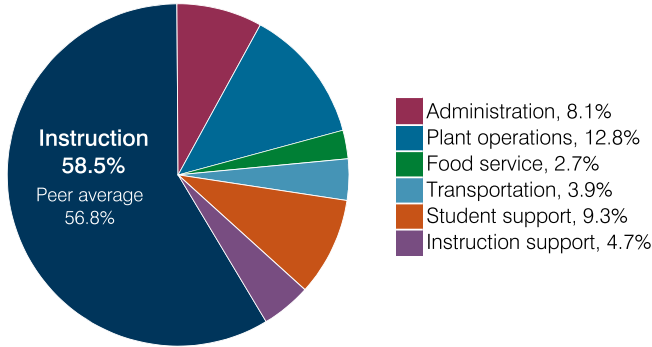
30,358

Number of schools:

44

OPERATIONAL EFFICIENCY

Spending by operational area



Efficiency measures relative to peer averages

Operational area	Measure	District	Peer average	State average
Administration	Cost per pupil	\$672	\$712	\$860
	Students per administrative position	73	80	66
Plant operations	Cost per square foot	\$6.38	\$6.18	\$6.34
	Square footage per student	167	149	156
Food service	Cost per meal	\$2.72	\$2.87	\$3.02
Transportation	Cost per mile	\$3.62	\$3.90	\$4.05
	Cost per rider	\$1,513	\$1,931	\$1,301

Legend: Very low (green), Low (blue), Comparable (yellow), High (orange), Very high (red)

Per pupil spending

Spending by area	District		Peer average 2018	State average 2018
	2017	2018		
Instruction	\$ 4,557	\$ 4,846	\$ 4,531	\$ 4,480
Administration	651	672	712	860
Plant operations	1,030	1,063	916	988
Food service	235	232	331	425
Transportation	327	322	358	388
Student support	788	770	704	693
Instruction support	401	384	395	462
Total operational	7,989	8,289	7,947	8,296
Land and buildings	1,002	1,036	631	827
Equipment	541	392	317	409
Interest	328	339	232	228
Other	283	294	207	169
Total nonoperational	2,154	2,061	1,387	1,633
Total per pupil spending	\$ 10,143	\$ 10,350	\$ 9,334	\$ 9,929

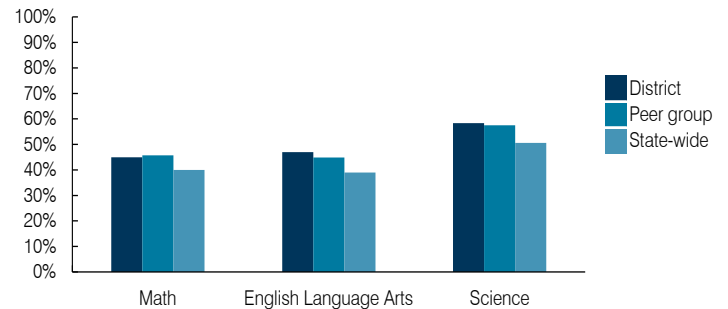
STUDENT ACHIEVEMENT, STUDENT AND TEACHER MEASURES, AND REVENUES

ADE-assigned school letter grades

Grade	Number of schools ²	Percentage of schools
A	17	43%
B	8	20%
C	12	30%
D	3	7%
F	0	0%

² Excludes schools for which letter grades were not published by ADE. See Appendix B for more information.

Students who passed State assessments



Student and teacher measures

Measure	District	Peer average	State average
Attendance rate	94%	94%	94%
Graduation rate (2017)	90%	90%	78%
Poverty rate (2017)	13%	12%	19%
Special education population	13%	13%	12%
Students per teacher	18.0	18.5	18.4
Average teacher salary	\$46,564	\$47,265	\$48,951
Amount from Prop 301	\$6,272	\$6,556	\$6,411
Average years of teacher experience	12.7	11.5	11.4
Percentage of teachers in first 3 years	15%	19%	19%

Per pupil revenues

Revenues by source	District		Peer average 2018	State average 2018
	2017	2018		
Federal	\$ 835	\$ 779	\$ 875	\$ 1,317
State	2,795	2,827	3,546	4,011
Local	6,871	6,929	5,443	4,592
Total per pupil revenues	\$ 10,501	\$ 10,535	\$ 9,864	\$ 9,920

Select revenues from common sources

Equalization formula funding	\$ 5,545	\$ 5,592	\$ 5,492	\$ 5,585
Grants	843	916	937	1,241
Donations and tax credits	102	99	94	90

Select revenues from less common sources

			Number of peers receiving
Desegregation	\$ 0	\$ 0	4 of 10
Small school adjustment	0	0	0 of 10
Federal impact aid	0	0	2 of 10
Voter-approved levy increases	2,554	2,548	10 of 10

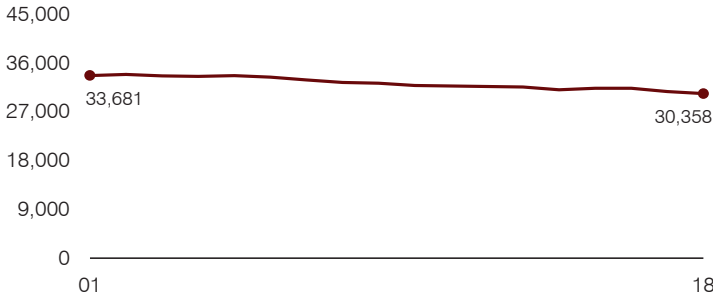
¹ See Appendix A for information such as districts included in each peer group and Appendix B for sources and methodology.

Instructional spending percentage

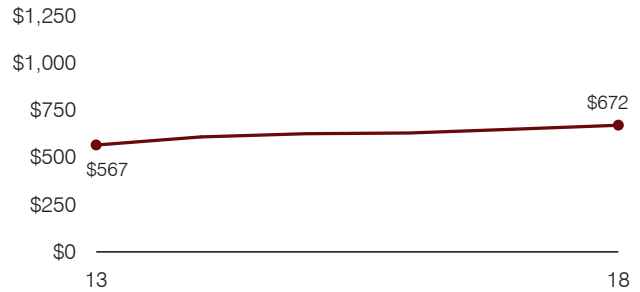
Year: 2001 2002 2003 2004 2005 2006 2007 2008 2009 2010 2011 2012 2013 2014 2015 2016 2017 2018
 Percentage: 64.0 64.6 62.9 61.8 63.0 62.1 62.4 60.8 60.6 59.8 58.8 55.8 57.1 57.7 57.2 56.4 57.0 58.5

TRENDS AND FINANCIAL STRESS ASSESSMENT
 Fiscal years as indicated

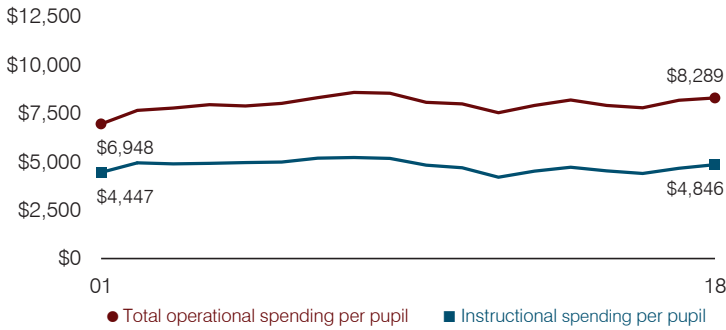
Students attending



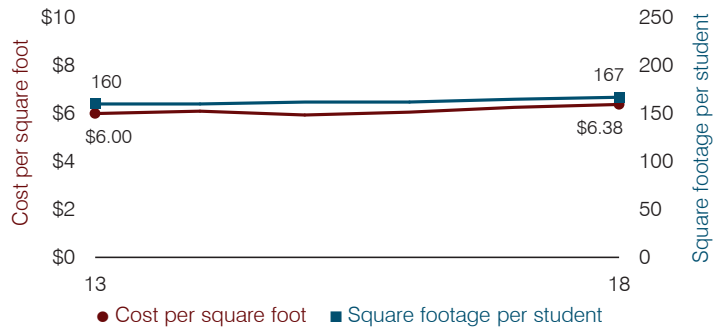
Administrative cost per pupil



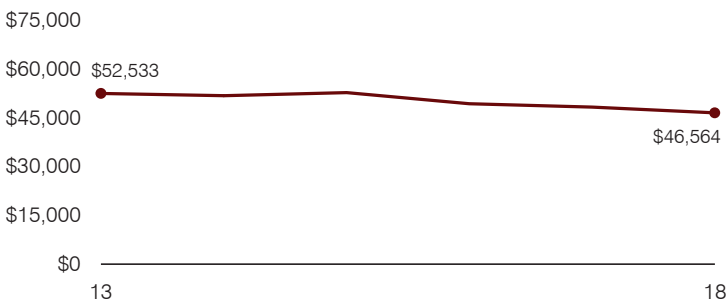
Total operational and instructional spending per pupil (inflation adjusted to 2018 dollars)



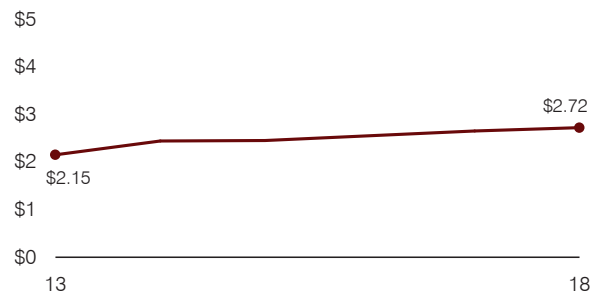
Plant cost per square foot and square footage per student



Average teacher salary



Food service cost per meal



Financial stress assessment

Overall financial stress level: **Low**

Measure: 2016 through 2018	Assessment
Change in number of district students	Moderate decrease
Spending exceeded operating/capital budgets	No overspending
Spending increase election results	Voter-approved
Operating reserve percentage, Trend	7.1%, Decreasing
Years of capital reserve held	More than 3 years
Current financial and internal control status	Marginally compliant

Low **Moderate** **High**

Transportation costs per mile and per rider

