

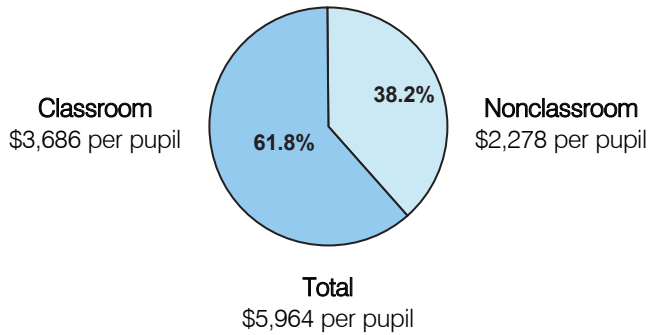
Classroom Dollars and Proposition 301 Results

Paradise Valley Unified School District

District size: Very Large
 Students attending: 33,509
 Number of schools: 43
 Number of certified teachers: 1,789

Classroom Dollars

Fiscal year 2004

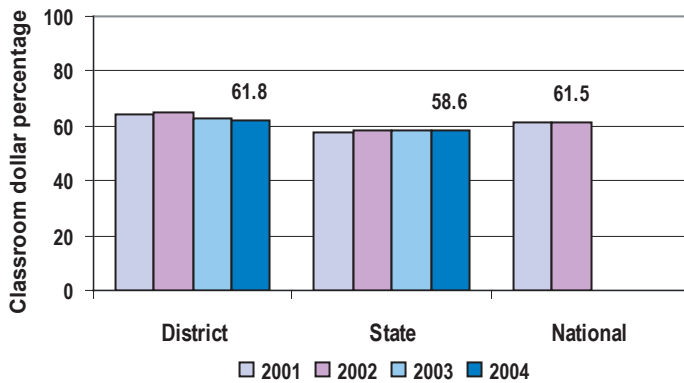


Comparative Information

	District			State
	2002	2003	2004	2004
Student/teacher ratio	18.4	18.0	18.7	18.2
Average teacher salary	\$44,195	\$44,100	\$44,122	\$38,534
Average years' experience	10.2	10.0	10.3	8.7

Classroom dollar ranking: 28 of 227 districts.

4-year comparison



Expenditures by function

	District Percentage				State 2004	National 2001
	2001	2002	2003	2004		
Classroom dollars	64.0	64.6	62.9	61.8	58.6	61.5
Nonclassroom dollars:						
Administration	7.5	7.3	7.4	7.2	9.5	10.9
Plant operations	12.3	11.1	11.6	12.7	11.7	9.7
Food service	2.9	2.8	3.0	3.2	4.7	4.0
Transportation	3.1	3.1	3.1	3.2	4.0	4.1
Student support	6.4	6.6	7.1	6.7	7.0	5.0
Instruction support	3.7	4.3	4.7	5.0	4.3	4.6
Other	0.1	0.2	0.2	0.2	0.2	0.2

Proposition 301

District-reported 2004 results

Teacher pay

- On average, each teacher, librarian, speech pathologist, audiologist, and counselor earned an additional \$4,430 in salary.

Performance

- The District accomplished its goals, which were based on school performance.
- 40 schools implemented plans for improving student achievement in specific areas, including reading, writing, and math. The goal called for eligible employees to identify needs, and develop and implement a plan to address those needs.
- 1 school worked to create a positive learning environment as measured by student disciplinary referrals and attendance.
- 1 school accomplished its goal of increasing the use of technology in the classroom as measured by the number of teachers using PowerPoint presentations and other forms of technology.
- 1 school decreased its number of disciplinary referrals and thereby increased the time available for teaching and learning.

Menu

- Monies were used solely to increase eligible employee compensation.