

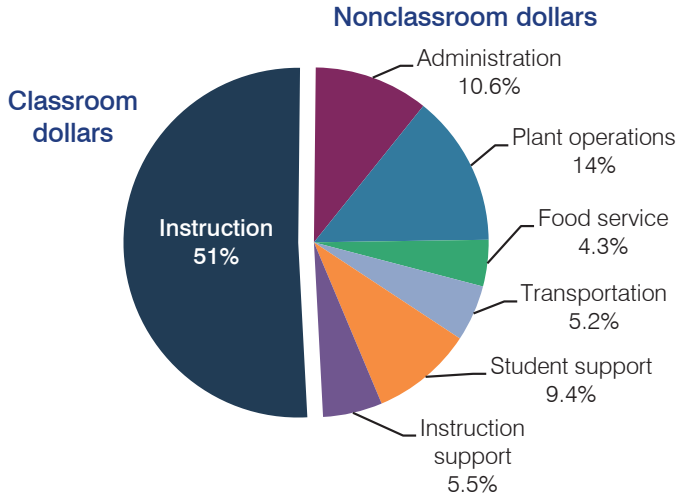
# Parker Unified School District

La Paz County  
 Efficiency peer groups 5 and T-8, Achievement peer group 6  
 Legislative district(s): 5

District size, location: Medium, Town  
 Students attending: 1,897  
 Number of schools: 6

## OPERATIONAL EFFICIENCY

### Spending by operational area



### 5-year spending trend

Total spending per pupil decreased by 10 percent. Spending in the classroom varied year to year, decreasing overall from 53.8 to 51 percent. Overall, spending on plant operations increased and spending on administration and transportation increased slightly. Spending on food service decreased slightly, while spending on other nonclassroom areas varied year to year.

### Cost measures relative to peer averages

Operational area	Measure	District	Peer average	State average
Administration	Cost per pupil	\$886	\$1,077	\$746
	Students per administrator	62	56	67
Plant operations	Cost per square foot	\$6.03	\$4.83	\$6.03
	Square footage per student	193	260	153
Food service	Cost per meal equivalent	\$2.52	\$3.14	\$2.58
Transportation	Cost per mile	\$2.82	\$2.52	\$3.55
	Cost per rider	\$741	\$797	\$1,015

Very low Low Comparable High Very high

### Per pupil spending by operational area

	District		Peer average	State average	National average
	2012	2013	2013	2013	2011
<b>Total</b>	<b>\$8,204</b>	<b>\$8,347</b>	<b>\$8,465</b>	<b>\$7,496</b>	<b>\$10,658</b>
<b>Classroom dollars</b>	<b>4,288</b>	<b>4,260</b>	<b>4,259</b>	<b>4,031</b>	<b>6,520</b>
<b>Nonclassroom dollars:</b>	<b>3,916</b>	<b>4,087</b>	<b>4,206</b>	<b>3,465</b>	<b>4,138</b>
Administration	827	886	1,077	746	1,138
Plant operations	1,061	1,163	1,237	924	1,015
Food service	343	361	419	396	412
Transportation	447	436	535	369	452
Student support	744	785	630	582	593
Instruction support	494	456	308	448	528

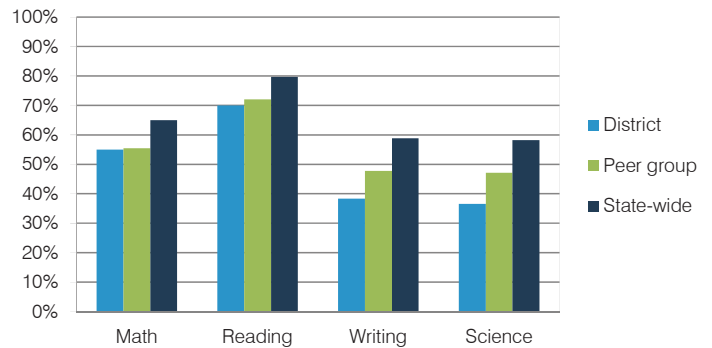
## STUDENT ACHIEVEMENT, TEACHER MEASURES, AND FINANCIAL ASSESSMENT

### ADE-reported district and school letter grades

District grade: **B**

Grade	Number of schools	Percentage of schools
A	0	0%
B	1	17%
C	4	66%
D	0	0%
F	0	0%
Not rated	1	17%

### Students who met state standards (AIMS)



### Student and teacher measures

Measure	District	Peer average	State average
Attendance rate	92%	93%	94%
Graduation rate (2012)	69%	80%	77%
Poverty rate (2012)	34%	33%	25%
Students per teacher	17.1	15.3	18.3
Average teacher salary	\$42,827	\$43,207	\$45,264
Amount from Proposition 301	\$4,612	\$3,525	\$3,784
Average years of teacher experience	11.0	11.9	10.9
Percentage of teachers in first 3 years	23%	20%	19%

### Financial stress assessment

Overall financial stress level: **Low**

Measure: 2011 through 2013

Measure	Assessment
Number of students attending district	Increase
Spending exceeded operating/capital budgets	No overspending
Spending increase election results	No election held
Operating reserve percentage (max. 4%), trend	3.3%, Increasing
Years of capital reserve held	More than 3 years
Current financial and internal control status	Compliant

Stress level

