

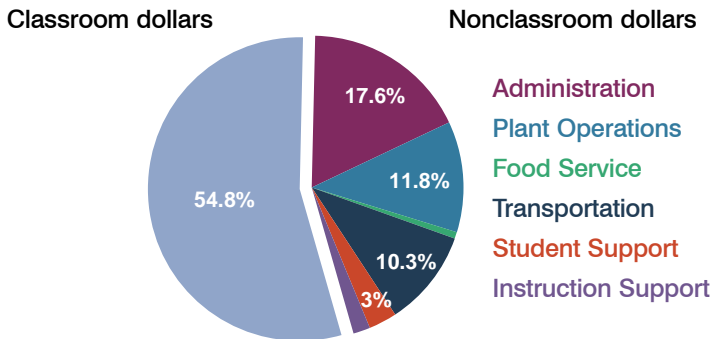
Patagonia Elementary School District

Santa Cruz County
Peer groups: Efficiency Group 12, Achievement Group 21
Legislative district(s): 25 and 30

District size: Very Small
Students attending: 72
Number of schools: 1

OPERATIONAL EFFICIENCY

Spending by operational area



5-year trend

Total spending per pupil increased by 4 percent. Spending in the classroom varied year to year, increasing slightly overall from 53.9 to 54.8 percent. Spending on some nonclassroom areas also varied year to year, as is common for very small districts. Overall, spending on administration and plant operations increased significantly, and spending on instruction support decreased significantly.

District's cost measures relative to peer group

Operational Area	Measure	District	Peer Average	State Average
Administration	Cost per pupil	\$2,559	\$2,437	\$728
	Students per administrator	68	30	66
Plant Operations	Cost per square foot	\$9.83	\$7.51	\$6.10
	Square footage per student	174	297	152
Food Service	Cost per meal equivalent	N/A	\$4.80	\$2.45
Transportation	Cost per mile	\$1.19	\$1.55	\$3.39
	Miles per rider	3,122	685	283

Very low Low Comparable High Very high

Per-pupil spending by operational area

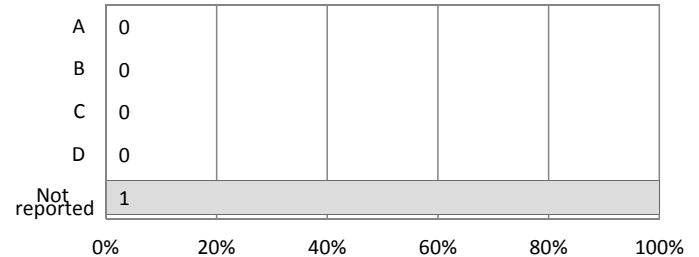
	District		Peer 2011	State 2011	National 2009
	2010	2011			
Total	\$13,507	\$14,503	\$14,927	\$7,485	\$10,591
Classroom dollars	\$7,192	\$7,949	\$7,803	\$ 4,098	\$ 6,456
Nonclassroom dollars:	\$6,315	\$6,554	\$7,124	\$ 3,387	\$ 4,135
Administration	2,409	2,559	2,437	728	1,147
Plant Operations	1,445	1,709	2,284	927	1,033
Food Service	64	105	742	375	404
Transportation	1,476	1,495	886	352	443
Student Support	479	437	451	571	573
Instruction Support	442	249	324	434	535

STUDENT ACHIEVEMENT AND TEACHER INFORMATION

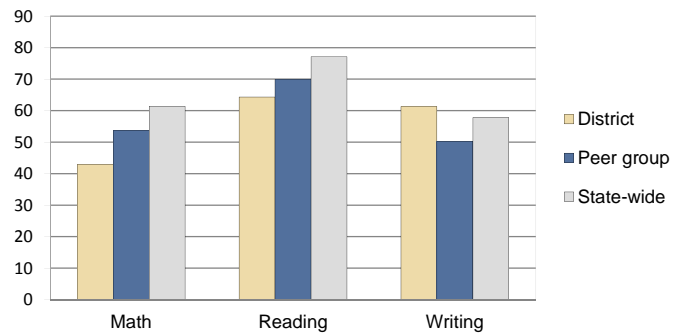
District and school letter grades

District grade: N/A

School grades (number and percentage):



Percentage of students meeting state standards (AIMS)



Student and teacher information

Measure	District	Peer Average	State Average
Attendance rate	95%	95%	95%
Graduation rate (2010)	N/A	N/A	N/A
Poverty rate (2010)	39%	38%	22%
Students per teacher	12.0	13.1	18.1
Average teacher salary	\$46,188	\$42,832	\$45,637
Average years of experience	19.1	10.3	10.9
Percent of teachers in first 3 years	10%	19%	16%

Proposition 301 pay, goals, and results

Average additional salary earned by teachers: \$5,020

Type of goal	Goal met?
Student achievement	■
Dropout/graduation rates	-
Student attendance	■
Parent/student satisfaction	■
Teacher attendance	-
Teacher professional development	-
Teacher evaluations	■
Tutoring	-
Other	■

■ = yes, □ = no, ▮ = partially, and - = no goal set