

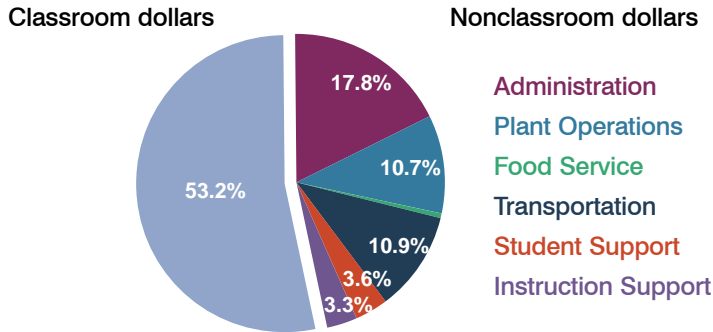
Patagonia Elementary School District

Santa Cruz County
Peer groups: Efficiency 12, Achievement 8
Legislative district(s): 25 and 30

District size: Very Small
Students attending: 78
Number of schools: 1

OPERATIONAL EFFICIENCY

Spending by function



5-year trend

Total spending per pupil increased by 17 percent. Spending in the classroom varied year to year, decreasing significantly overall from 59 to 53.2 percent. Spending on administration and plant operations increased significantly, while spending in other nonclassroom areas varied year to year.

District's cost measures relative to peer group

Operational Area	Measure	District	Peer Average	State Average
Administration	Cost per pupil	\$2,409	\$2,444	\$721
	Students per administrator	74	32	66
Plant Operations	Cost per square foot	\$9.05	\$7.59	\$6.25
	Square footage per student	160	297	146
Food Service	Cost per meal equivalent	N/A	\$4.85	\$2.41
Transportation	Cost per mile	\$2.11	\$1.87	\$3.35
	Miles per rider	NR	611	282

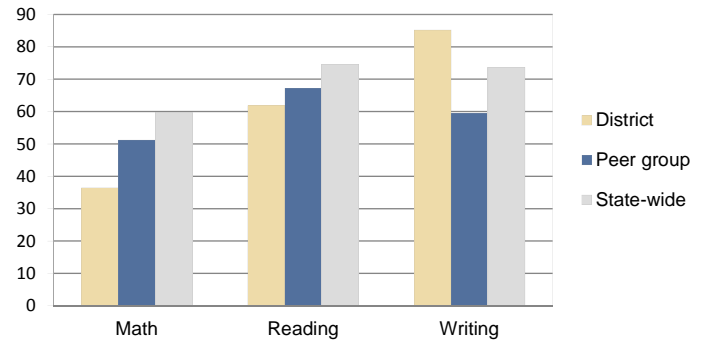
Very low Low Comparable High Very high

Per-pupil spending by function

	District		Peer 2010	State 2010	National 2008
	2009	2010			
Total	\$13,858	\$13,507	\$15,187	\$7,609	\$10,297
Classroom dollars	\$7,701	\$7,192	\$8,084	\$4,253	\$6,262
Nonclassroom dollars:	\$6,157	\$6,315	\$7,103	\$3,356	\$4,035
Administration	2,221	2,409	2,444	721	1,109
Plant Operations	1,561	1,445	2,188	914	1,003
Food Service	68	64	751	366	390
Transportation	1,139	1,476	924	342	438
Student Support	495	479	473	581	556
Instruction Support	673	442	323	432	539

STUDENT ACHIEVEMENT AND TEACHER INFORMATION

Percentage of students meeting state standards (AIMS)



Adequate Yearly Progress (AYP) toward federal goals

The District's school met all applicable AYP objectives for NCLB.

Student and teacher information

Measure	District	Peer Average	State Average
Attendance rate	94%	94%	94%
Graduation rate (2009)	N/A	N/A	76%
Poverty rate (2009)	36%	34%	21%
Student/teacher ratio	13.0	14.4	17.9
Average teacher salary	\$42,235	\$43,616	\$47,077
Average years' experience	18.3	11.0	10.6
Percent of teachers in first 3 years	21%	20%	20%

Proposition 301

Teacher and other staff pay

On average, each teacher earned \$5,353 in additional pay.

Performance pay plan goals and results

Type of goal	Goal met?
Student achievement	■
Dropout/graduation rates	-
Student attendance	■
Parent/student satisfaction	-
Teacher attendance	-
Teacher professional development	■
Teacher evaluations	-
Tutoring	-
Other	■

■ = yes, □ = no, ▬ = partially, and - = no goal set