

# Patagonia Elementary School District

Santa Cruz County  
Operational peer group: L  
Legislative districts: 25, 30

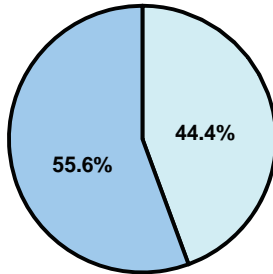
District size: Very Small  
Students attending: 74  
Number of schools: 1

## OPERATIONAL EFFICIENCY

### Average per-pupil spending

District  
State

Classroom  
\$7,701  
\$4,497



Nonclassroom  
\$6,157  
\$3,411

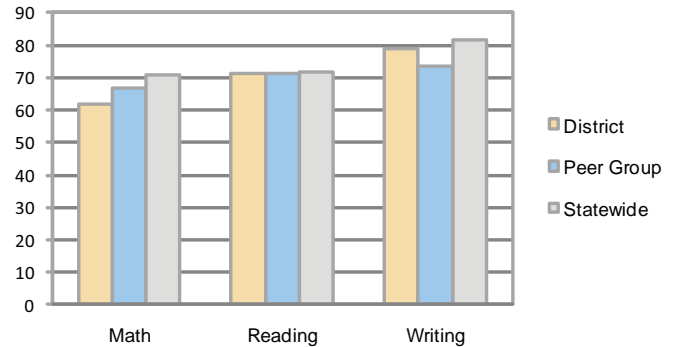
Total  
\$13,858  
\$7,908

### 5-year trend

Total spending per pupil increased by 13 percent. Spending in the classroom varied year to year and decreased significantly overall from 60.4 to 55.6 percent. Spending on plant operations and instructional support increased significantly, while spending in other nonclassroom areas was very inconsistent year to year.

## STUDENT ACHIEVEMENT AND TEACHER INFORMATION

### Percentage of students meeting state standards (AIMS)



### Adequate Yearly Progress (AYP) toward federal goals

The District's school met all applicable AYP objectives for NCLB.

### District's cost measures relative to peer group

Operational Area	Measure	District	Peer Average	State Average
Administration	Cost per pupil	\$2,221	\$2,656	\$729
	Students per administrator	47	32	66
Plant Operations	Cost per square foot	\$9.22	\$7.53	\$6.40
	Square footage per student	169	318	144
Food Service	Cost per meal equivalent	N/A	\$5.10	\$2.53
Transportation	Cost per mile	NR	\$1.79	\$3.36
	Miles per rider	NR	710	271

Very Low   Low   Comparable   High   Very High

### Student and teacher information

Measure	District	Peer average	State average
Attendance rate	95%	94%	95%
Graduation rate (2008)	N/A	54%	75%
Poverty rate	30%	31%	19%
Student/teacher ratio	14.7	10.8	17.1
Average teacher salary	\$48,461	\$45,165	\$45,209
Average years' experience	19.7	12.7	8.3
Percent of teachers in first 3 years	17%	15%	16%

### Proposition 301

#### Teacher pay

On average, each teacher earned \$5,098 in additional salary.

#### Performance pay plan goals and results

Type of goal	Goal met?
Student achievement	■
Dropout/ graduation rates	■
Student attendance	■
Parent/student satisfaction	■
Teacher attendance	■
Teacher professional development	■
Teacher evaluations	■
Tutoring	■
Other	■

■ = yes, □ = no, and ▴ = partially

### Per-pupil spending by function

	District		Peer 2009	State 2009	National 2007
	2008	2009			
<b>Total</b>	<b>\$17,911</b>	<b>\$13,858</b>	<b>\$16,311</b>	<b>\$7,908</b>	<b>\$9,683</b>
<b>Classroom dollars</b>	<b>\$9,805</b>	<b>\$7,701</b>	<b>\$8,757</b>	<b>\$4,497</b>	<b>\$5,903</b>
<b>Nonclassroom dollars:</b>	<b>\$8,106</b>	<b>\$6,157</b>	<b>\$7,554</b>	<b>\$3,411</b>	<b>\$3,780</b>
Administration	3,330	2,221	2,656	729	1,050
Plant Operations	1,690	1,561	2,297	920	951
Food Service	243	68	859	382	369
Transportation	1,672	1,139	930	343	406
Student Support	356	495	474	594	512
Instruction Support	815	673	338	431	470
Other	0	0	0	12	22