

Patagonia Union High School District

Santa Cruz County

Efficiency peer groups 11 and T-13, Achievement peer group 11

Legislative district(s): 2

District size / location: Very Small, Rural

Students attending: 64

Number of schools: 1

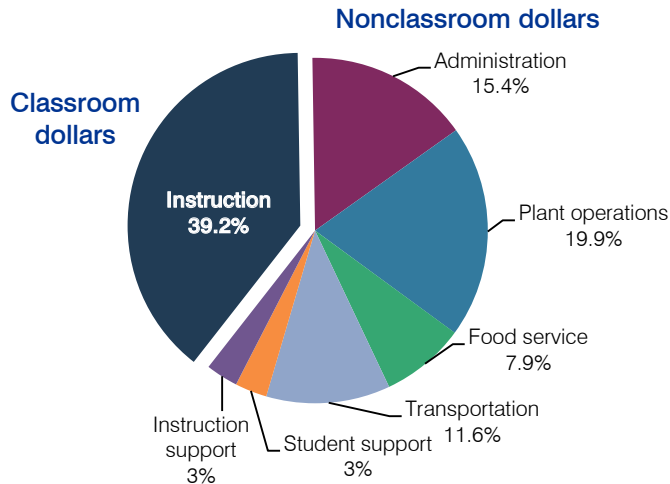
Very Small, Rural

64

1

OPERATIONAL EFFICIENCY

Spending by operational area



5-year spending trend

Total spending per pupil increased by 42 percent. Spending in the classroom varied year to year, decreasing overall from 42.2 to 39.2 percent. Spending on most nonclassroom areas also varied year to year, as is common for very small districts. Overall, spending on plant operations increased substantially.

Cost measures relative to peer averages

Operational area	Measure	District	Peer average	State average
Administration	Cost per pupil	\$3,491	\$2,472	\$736
	Students per administrator	20	30	66
Plant operations	Cost per square foot	\$4.09	\$6.93	\$6.09
	Square footage per student	1,106	320	152
Food service	Cost per meal equivalent	\$4.55	\$4.88	\$2.47
Transportation	Cost per mile	\$1.02	\$1.53	\$3.50
	Cost per rider	\$4,679	\$1,171	\$982

Per-pupil spending by operational area

	District		Peer average	State average	National average
	2011	2012	2012	2012	2010
Total	\$20,514	\$22,705	\$15,082	\$7,475	\$10,652
Classroom dollars	8,231	8,890	7,880	4,053	6,526
Nonclassroom dollars:	12,283	13,815	7,202	3,422	4,126
Administration	3,659	3,491	2,472	736	1,139
Plant operations	3,669	4,524	2,126	928	1,012
Food service	1,448	1,788	756	382	405
Transportation	2,100	2,632	970	362	443
Student support	844	685	541	578	592
Instruction support	563	695	337	436	535

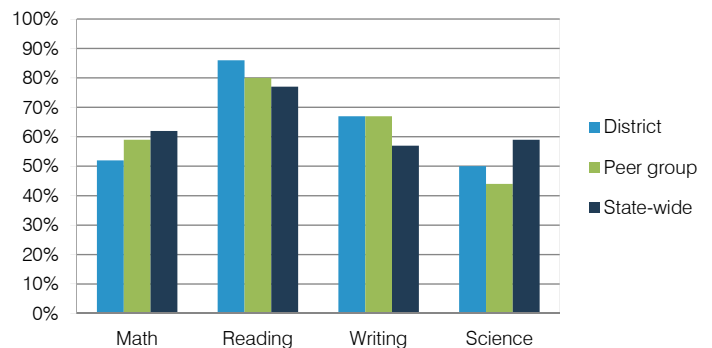
STUDENT ACHIEVEMENT, TEACHER MEASURES, AND FINANCIAL ASSESSMENT

ADE-reported district and school letter grades

District grade: **B**

Grade	Number of schools	Percentage of schools
A	0	0%
B	1	100%
C	0	0%
D	0	0%
F	0	0%
Not rated	0	0%

Percentage of students who met state standards (AIMS)



Student and teacher measures

Measure	District	Peer average	State average
Attendance rate	94%	94%	94%
Graduation rate (2011)	100%	86%	78%
Poverty rate (2011)	26%	22%	25%
Students per teacher	6.8	14.0	18.1
Average teacher salary	\$30,185	\$39,650	\$45,193
Amount from Proposition 301	\$2,155	\$3,669	\$3,195
Average years of teacher experience	7.8	10.6	11.0
Percentage of teachers in first 3 years	52%	31%	16%

Financial stress assessment

Overall financial stress level: **Low**

Measure: 2010 through 2012	Assessment
Number of students attending	Small school adjustment
Spending exceeded operating/capital budgets	No overspending
Spending increase election results	No election held
Operating reserve percentage (max. 4%), trend	4.0%, Steady
Years of capital reserve held	More than 3 years
Current financial and internal control status	Compliant

