

# Patagonia Union High School District

Santa Cruz County

District size, location:

Very small, Rural

Efficiency peer groups 11 and T-11, Achievement peer group 10<sup>1</sup>

Students attending:

75

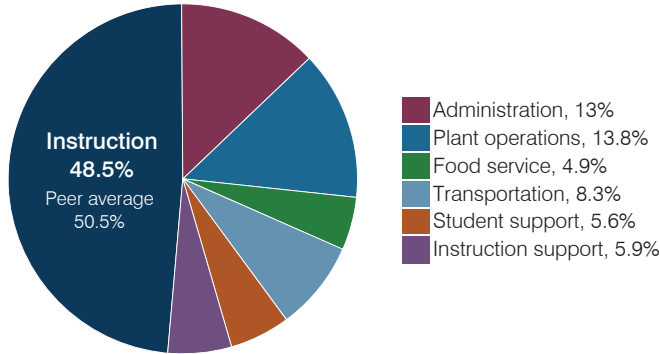
Legislative district(s): 2

Number of schools:

1

## OPERATIONAL EFFICIENCY

### Spending by operational area



### Efficiency measures relative to peer averages

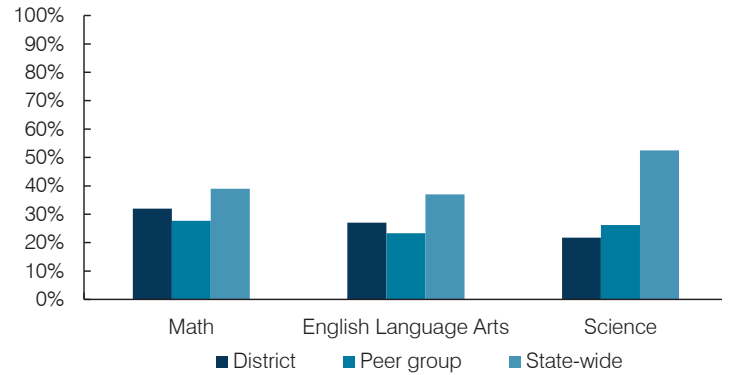
Operational area	Measure	District	Peer average	State average
Administration	Cost per pupil	\$2,530	\$3,137	\$844
	Students per administrative position	55	32	67
Plant operations	Cost per square foot	\$4.84	\$6.96	\$6.30
	Square footage per student	557	412	155
Food service	Cost per meal	\$5.32	\$5.79	\$2.88
Transportation	Cost per mile	\$1.39	\$1.87	\$3.84
	Cost per rider	\$3,314	\$1,459	\$1,198

### Per pupil spending

Spending by area	District		Peer average 2017	State average 2017
	2016	2017		
Instruction	\$ 8,881	\$ 9,460	\$ 8,613	\$ 4,377
Administration	2,993	2,530	3,137	844
Plant operations	2,605	2,696	2,644	977
Food service	924	951	1,000	422
Transportation	1,464	1,617	961	381
Student support	1,083	1,084	601	679
Instruction support	1,104	1,157	498	461
<b>Total operational</b>	<b>\$ 19,054</b>	<b>\$ 19,495</b>	<b>\$ 17,454</b>	<b>\$ 8,141</b>
Land and buildings	\$ 332	\$ 123	\$ 1,161	\$ 691
Equipment	1,184	667	735	424
Interest	0	0	31	236
Other	67	111	90	161
<b>Total nonoperational</b>	<b>\$ 1,583</b>	<b>\$ 901</b>	<b>\$ 2,017</b>	<b>\$ 1,512</b>
<b>Total per pupil spending</b>	<b>\$ 20,637</b>	<b>\$ 20,396</b>	<b>\$ 19,471</b>	<b>\$ 9,653</b>

## STUDENT ACHIEVEMENT, STUDENT AND TEACHER MEASURES, AND REVENUES

### Students who passed state assessments



### Student and teacher measures

Measure	District	Peer average	State average
Attendance rate	94%	94%	94%
Graduation rate (2016)	100%	91%	80%
Poverty rate (2016)	10%	14%	22%
Special education population	13%	14%	12%
Students per teacher	7.6	13.1	18.5
Average teacher salary	\$38,338	\$40,448	\$48,372
Amount from Prop 301	\$2,845	\$5,163	\$5,840
Average years of teacher experience	10.3	9.6	11.3
Percentage of teachers in first 3 years	20%	19%	19%

### Per pupil revenues

Revenues by source	District		Peer average 2017	State average 2017
	2016	2017		
Federal	\$ 2,671	\$ 2,106	\$ 2,908	\$ 1,318
State	3,989	4,313	5,692	3,831
Local	12,930	14,229	13,343	4,443
<b>Total per pupil revenues</b>	<b>\$ 19,590</b>	<b>\$ 20,648</b>	<b>\$ 21,943</b>	<b>\$ 9,592</b>

#### Select revenues from common sources

	District	Peer average	State average
Equalization formula funding	\$ 9,768	\$ 10,127	\$ 9,932
Amount from Prop 123	133	276	315
Prop 123 additional funding	28	57	57
Grants	2,736	2,144	2,701
Donations and tax credits	223	257	184

#### Select revenues from less common sources

	District	Peer average	Number of peers receiving
Desegregation	\$ 0	\$ 0	0 of 54
Small school adjustment	2,948	3,074	44 of 54
Federal impact aid	0	0	5 of 54
Voter-approved levy increases	0	0	7 of 54

<sup>1</sup> See Appendix A for information such as districts included in each peer group and Appendix B for sources and methodology.

**Instructional spending percentage**

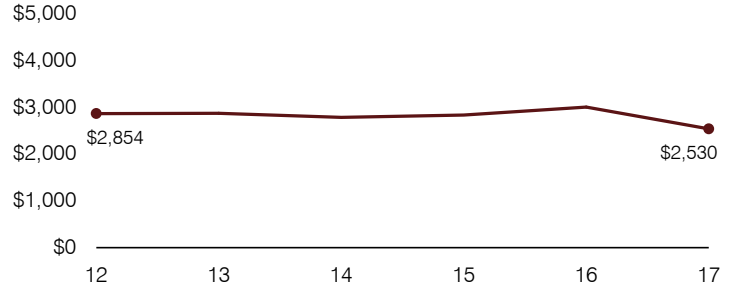
Year:	2001	2002	2003	2004	2005	2006	2007	2008	2009	2010	2011	2012	2013	2014	2015	2016	2017
Percentage:	48.1	48.8	50.4	50.7	49.3	46.5	47.8	46.0	45.6	44.4	46.3	47.9	46.4	47.6	44.7	46.6	48.5

**OPERATIONAL TRENDS AND FINANCIAL STRESS ASSESSMENT**  
Fiscal years as indicated

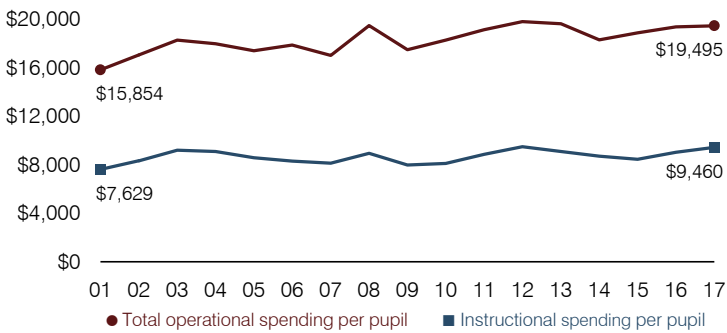
**5-year spending trend (2012 through 2017)**

Total operational spending per pupil, adjusted for inflation, decreased by 2 percent. The percentage of dollars spent on instruction varied year to year, increasing slightly overall from 47.9 to 48.5 percent. As a percentage of total operational spending, most noninstructional areas also varied year to year, as is common for very small districts. Overall, administration and plant operations decreased substantially.

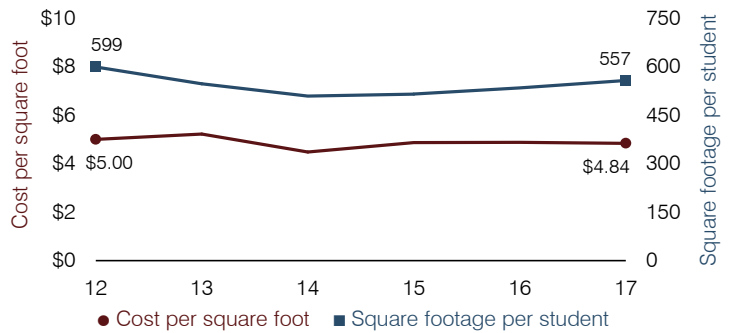
**Administrative cost per pupil**



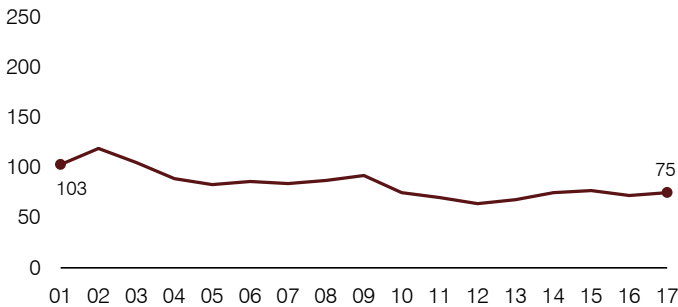
**Total operational and instructional spending per pupil (inflation adjusted to 2017 dollars)**



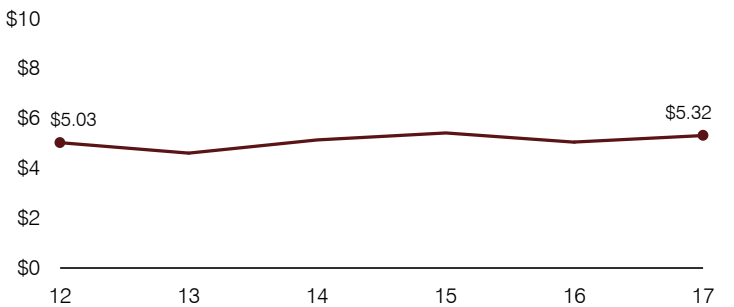
**Plant cost per square foot and square footage per student**



**Students attending**



**Food service cost per meal**



**Financial stress assessment**

Overall financial stress level: **Low**

Measure: 2015 through 2017	Assessment
Change in number of district students	Small school adjustment
Spending exceeded operating/capital budgets	No overspending
Spending increase election results	No election held
Operating reserve percentage, Trend	6.2%, Increasing
Years of capital reserve held	More than 3 years
Current financial and internal control status	Compliant

Low Moderate High

**Transportation costs per mile and per rider**

