

# Patagonia Union High School District

Santa Cruz County  
 Operational peer group: G  
 Legislative districts: 25, 30

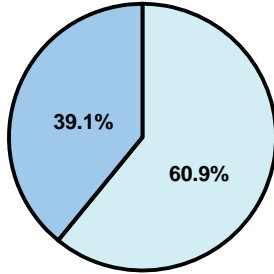
District size: Very Small  
 Students attending: 92  
 Number of schools: 1

## OPERATIONAL EFFICIENCY

### Average per-pupil spending

District  
 State

Classroom  
**\$6,562**  
 \$4,497



Nonclassroom  
**\$10,234**  
 \$3,411

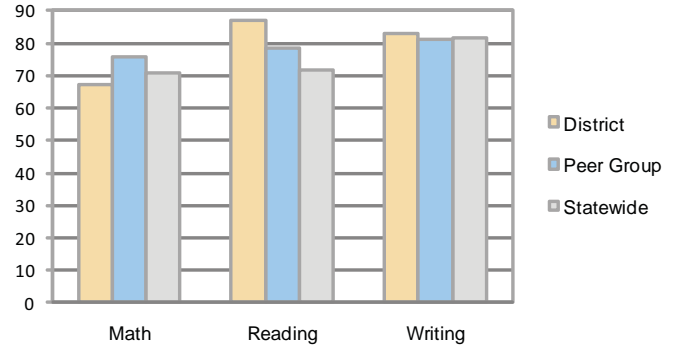
Total  
**\$16,796**  
 \$7,908

### 5-year trend

Total spending per pupil increased by 10 percent. Spending in the classroom varied year to year and decreased significantly overall from 42.5 to 39.1 percent. Spending on plant operations and student support increased significantly, while spending in other nonclassroom areas varied year to year.

## STUDENT ACHIEVEMENT AND TEACHER INFORMATION

### Percentage of students meeting state standards (AIMS)



### Adequate Yearly Progress (AYP) toward federal goals

The District's school met all applicable AYP objectives for NCLB.

### District's cost measures relative to peer group

Operational Area	Measure	District	Peer Average	State Average
Administration	Cost per pupil	\$3,031	\$2,646	\$729
	Students per administrator	22	26	66
Plant Operations	Cost per square foot	\$4.07	\$4.99	\$6.40
	Square footage per student	770	535	144
Food Service	Cost per meal equivalent	\$3.13	\$4.15	\$2.53
Transportation	Cost per mile	NR	\$1.93	\$3.36
	Miles per rider	NR	772	271

Very Low    Low    Comparable    High    Very High

### Student and teacher information

Measure	District	Peer average	State average
Attendance rate	91%	95%	95%
Graduation rate (2008)	88%	55%	75%
Poverty rate	13%	12%	19%
Student/teacher ratio	12.3	10.7	17.1
Average teacher salary	\$40,869	\$45,399	\$45,209
Average years' experience	5.9	10.9	8.3
Percent of teachers in first 3 years	59%	18%	16%

### Proposition 301

#### Teacher pay

On average, each teacher earned \$6,271 in additional salary, and the librarian and counselor each earned between \$1,506 and \$2,011.

#### Performance pay plan goals and results

Type of goal	Goal met?
Student achievement	■
Dropout/ graduation rates	■
Student attendance	■
Parent/student satisfaction	■
Teacher attendance	■
Teacher professional development	■
Teacher evaluations	■
Tutoring	■
Other	■

■ = yes, □ = no, and ▤ = partially

### Per-pupil spending by function

	District		Peer 2009	State 2009	National 2007
	2008	2009			
<b>Total</b>	<b>\$16,395</b>	<b>\$16,796</b>	<b>\$15,223</b>	<b>\$7,908</b>	<b>\$9,683</b>
<b>Classroom dollars</b>	<b>\$6,422</b>	<b>\$6,562</b>	<b>\$7,195</b>	<b>\$4,497</b>	<b>\$5,903</b>
<b>Nonclassroom dollars:</b>	<b>\$9,973</b>	<b>\$10,234</b>	<b>\$8,028</b>	<b>\$3,411</b>	<b>\$3,780</b>
Administration	2,730	3,031	2,646	729	1,050
Plant Operations	3,050	3,134	2,496	920	951
Food Service	1,122	1,110	800	382	369
Transportation	2,112	1,702	1,036	343	406
Student Support	498	757	529	594	512
Instruction Support	461	500	520	431	470
Other	0	0	1	12	22