

Payson Unified School District

Gila County

Peer groups: Efficiency Group 4, Achievement Group 6

Legislative district(s): 5

District size: Medium-Large

Students attending: 2,449

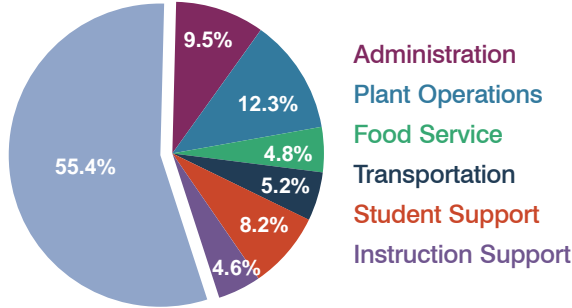
Number of schools: 6

OPERATIONAL EFFICIENCY

Spending by operational area

Classroom dollars

Nonclassroom dollars



5-year trend

Total spending per pupil increased 21 percent. Spending in the classroom varied year to year, decreasing significantly overall from 57.4 to 55.4 percent. Spending on transportation increased, while spending on other nonclassroom areas remained fairly stable.

District's cost measures relative to peer group

Operational Area	Measure	District	Peer Average	State Average
Administration	Cost per pupil	\$765	\$736	\$728
	Students per administrator	53	65	66
Plant Operations	Cost per square foot	\$5.55	\$5.52	\$6.10
	Square footage per student	179	169	152
Food Service	Cost per meal equivalent	\$3.11	\$2.60	\$2.45
Transportation	Cost per mile	\$3.19	\$2.93	\$3.39
	Miles per rider	394	324	283

Very low Low Comparable High Very high

Per-pupil spending by operational area

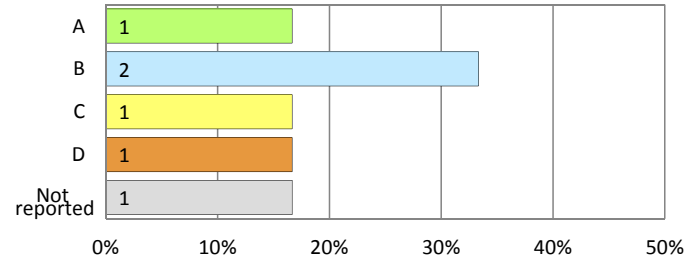
	District		Peer 2011	State 2011	National 2009
	2010	2011			
Total	\$7,903	\$8,044	\$7,026	\$7,485	\$10,591
Classroom dollars	\$4,444	\$4,460	\$3,783	\$4,098	\$6,456
Nonclassroom dollars:	\$3,459	\$3,584	\$3,243	\$3,387	\$4,135
Administration	739	765	736	728	1,147
Plant Operations	930	992	917	927	1,033
Food Service	382	386	351	375	404
Transportation	340	417	360	352	443
Student Support	681	656	528	571	573
Instruction Support	387	368	351	434	535

STUDENT ACHIEVEMENT AND TEACHER INFORMATION

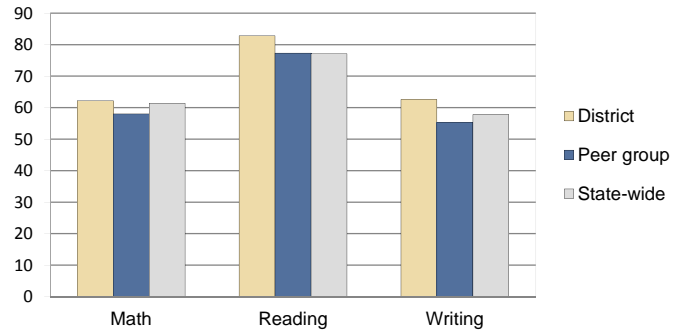
District and school letter grades

District grade: **B**

School grades (number and percentage):



Percentage of students meeting state standards (AIMS)



Student and teacher information

Measure	District	Peer Average	State Average
Attendance rate	94%	94%	95%
Graduation rate (2010)	77%	82%	78%
Poverty rate (2010)	25%	24%	22%
Students per teacher	17.2	17.3	18.1
Average teacher salary	\$46,643	\$41,429	\$45,637
Average years of experience	11.9	12.6	10.9
Percent of teachers in first 3 years	8%	12%	16%

Proposition 301 pay, goals, and results

Average additional salary earned by teachers: \$3,192

Type of goal	Goal met?
Student achievement	■
Dropout/graduation rates	-
Student attendance	-
Parent/student satisfaction	■
Teacher attendance	-
Teacher professional development	■
Teacher evaluations	-
Tutoring	-
Other	-

■ = yes, □ = no, ▮ = partially, and - = no goal set