

# Payson Unified School District

Gila County  
Operational peer group: D  
Legislative districts: 5

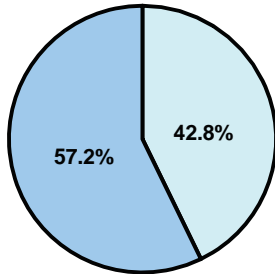
District size: Medium-Large  
Students attending: 2,569  
Number of schools: 6

## OPERATIONAL EFFICIENCY

### Average per-pupil spending

District  
State

**Classroom**  
\$4,456  
\$4,497



**Nonclassroom**  
\$3,334  
\$3,411

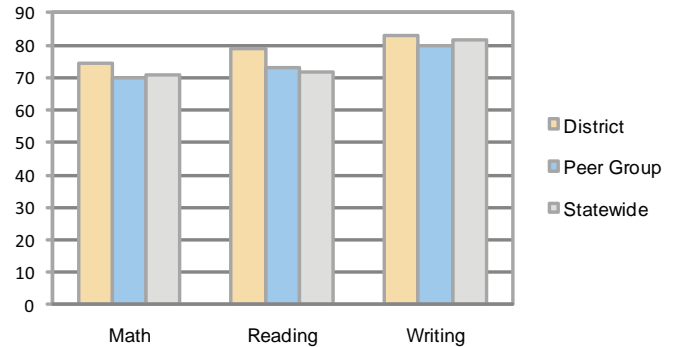
**Total**  
\$7,790  
\$7,908

### 5-year trend

Total spending per pupil increased 30 percent. Spending in the classroom varied year to year and decreased significantly overall from 59.5 to 57.2 percent. Spending on instruction support, food service, and transportation increased, while spending in other nonclassroom areas remained fairly stable.

## STUDENT ACHIEVEMENT AND TEACHER INFORMATION

### Percentage of students meeting state standards (AIMS)



### Adequate Yearly Progress (AYP) toward federal goals

5 schools met all applicable AYP objectives for NCLB. 1 school was not eligible for AYP determination.

### Student and teacher information

Measure	District	Peer average	State average
Attendance rate	93%	94%	95%
Graduation rate (2008)	69%	73%	75%
Poverty rate	17%	15%	19%
Student/teacher ratio	15.5	17.2	17.1
Average teacher salary	\$43,644	\$42,175	\$45,209
Average years' experience	10.7	8.4	8.3
Percent of teachers in first 3 years	23%	34%	16%

### District's cost measures relative to peer group

Operational Area	Measure	District	Peer Average	State Average
Administration	Cost per pupil	\$722	\$775	\$729
	Students per administrator	52	61	66
Plant Operations	Cost per square foot	\$5.93	\$6.13	\$6.40
	Square footage per student	151	168	144
Food Service	Cost per meal equivalent	\$2.91	\$2.64	\$2.53
Transportation	Cost per mile	\$2.77	\$2.96	\$3.36
	Miles per rider	372	307	271

Very Low   Low   Comparable   High   Very High

### Per-pupil spending by function

	District		Peer 2009	State 2009	National 2007
	2008	2009			
<b>Total</b>	<b>\$7,804</b>	<b>\$7,790</b>	<b>\$7,896</b>	<b>\$7,908</b>	<b>\$9,683</b>
<b>Classroom dollars</b>	<b>\$4,546</b>	<b>\$4,456</b>	<b>\$4,312</b>	<b>\$4,497</b>	<b>\$5,903</b>
<b>Nonclassroom dollars:</b>	<b>\$3,258</b>	<b>\$3,334</b>	<b>\$3,584</b>	<b>\$3,411</b>	<b>\$3,780</b>
Administration	690	722	775	729	1,050
Plant Operations	915	895	1,032	920	951
Food Service	369	370	365	382	369
Transportation	316	322	397	343	406
Student Support	602	635	629	594	512
Instruction Support	355	380	380	431	470
Other	11	10	6	12	22

### Proposition 301

#### Teacher pay

On average, each teacher earned \$5,438 in additional salary, and each librarian, speech pathologist, and counselor earned between \$1,570 and \$6,761.

#### Performance pay plan goals and results

Type of goal	Goal met?
Student achievement	▲
Dropout/ graduation rates	
Student attendance	
Parent/student satisfaction	■
Teacher attendance	■
Teacher professional development	■
Teacher evaluations	
Tutoring	
Other	

■ = yes, □ = no, and ▲ = partially