

# Classroom Dollars and Proposition 301 Results

## Peach Springs Unified School District

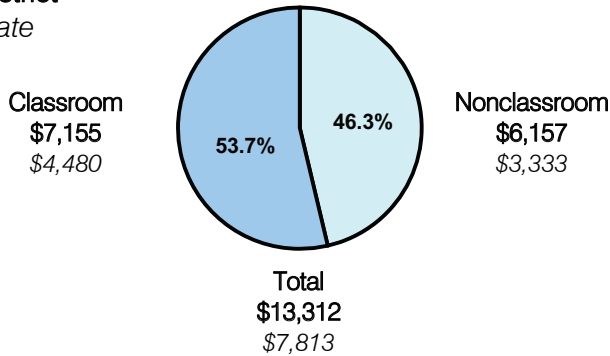
Mohave County

District size: Very Small  
 Students attending: 181  
 Number of schools: 2  
 Number of certified teachers: 14

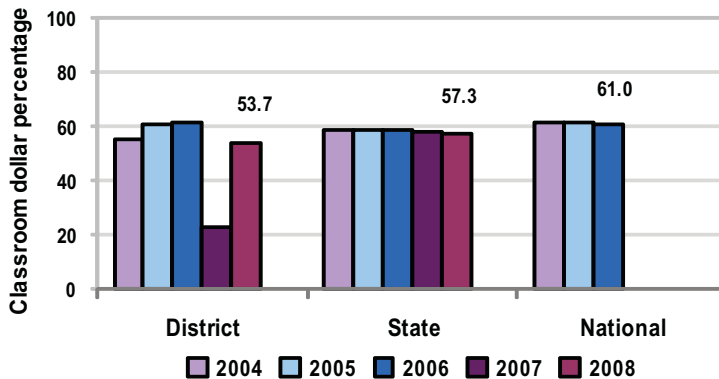
### Classroom Dollars

Fiscal year 2008 averages per pupil

District  
 State



5-year comparison



### Expenditures by function

	District					State 2008	National 2006
	2004	2005	2006	2007	2008		
Classroom dollars	55.0	60.6	61.3	22.8	53.7	57.3	61.0
Nonclassroom dollars:							
Administration	19.2	15.6	12.0	33.6	24.4	9.2	10.8
Plant operations	10.6	12.4	15.4	18.0	13.0	11.3	9.9
Food service	5.1	5.1	6.3	7.0	4.2	4.8	3.8
Transportation	3.8	3.4	3.5	5.3	1.7	4.4	4.2
Student support	1.8	1.5	0.3	1.6	2.6	7.4	5.2
Instruction support	4.5	1.4	1.2	11.7	0.4	5.4	4.9
Other						0.2	0.2

### Comparative Information

	District			State 2008
	2006	2007	2008	
Student/teacher ratio	11.5	9.2	13.4	17.3
Average teacher salary	\$39,341	\$44,244	\$49,728	\$44,967
Average years' experience	8.1	6.5	8.8	8.1

Classroom dollar ranking: 142 of 230 districts.

### Proposition 301

#### District-reported 2008 results

##### Teacher pay

- On average, each teacher earned an additional \$3,798 in salary.

##### Performance

- The District accomplished most of its goals, which were based on district, school, and individual performance.
- Students' standardized test scores for reading, writing, and math increased by approximately 10 percent, overall.
- The graduation rate increased to 72 percent.
- Parent involvement increased by 11 percent.
- The District did not meet all of its student achievement goals, and its student attendance rate fell short of the goal.

##### Menu

- Menu monies were primarily used for teacher compensation.
- Monies were also used to pay a part-time kindergarten teacher for class size reduction.