

Classroom Dollars and Proposition 301 Results

Peach Springs Unified School District

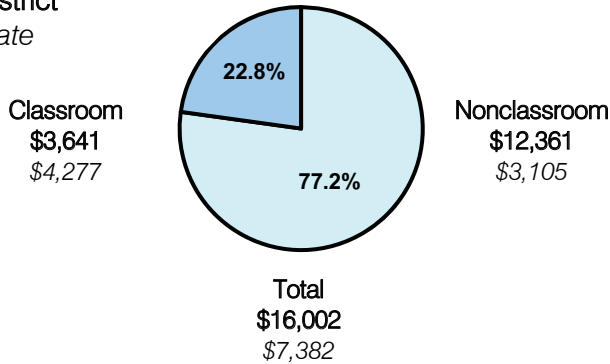
Mohave County

District size: Very Small
 Students attending: 191
 Number of schools: 3
 Number of certified teachers: 21

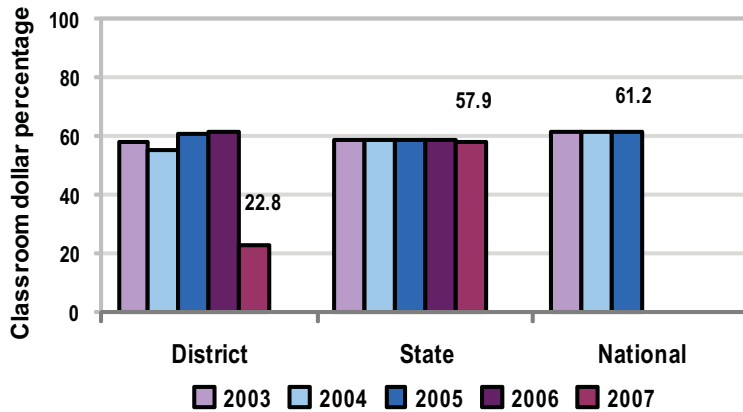
Classroom Dollars

Fiscal year 2007 averages per pupil

District
 State



5-year comparison



Expenditures by function

	District					State 2007	National 2005
	2003	2004	2005	2006	2007		
Classroom dollars	57.8	55.0	60.6	61.3	22.8	57.9	61.2
Nonclassroom dollars:							
Administration	16.3	19.2	15.6	12.0	33.6	9.5	11.0
Plant operations	11.5	10.6	12.4	15.4	18.0	11.3	9.6
Food service	5.8	5.1	5.1	6.3	7.0	4.7	3.9
Transportation	3.6	3.8	3.4	3.5	5.3	4.3	4.1
Student support	2.3	1.8	1.5	0.3	1.6	7.3	5.2
Instruction support	2.7	4.5	1.4	1.2	11.7	4.8	4.8
Other						0.2	0.2

Comparative Information

	District			State 2007
	2005	2006	2007	
Student/teacher ratio	10.3	11.5	9.2	17.4
Average teacher salary	\$38,552	\$39,341	\$39,396	\$43,833
Average years' experience	8.4	8.1	6.5	8.1

Classroom dollar ranking: 222 of 229 districts.

Proposition 301

District-reported 2007 results

Teacher pay

- On average, each teacher earned an additional \$2,912 in salary.

Performance

- The District accomplished its goals, which were based on district, school, and individual performance.
- 85 percent of students' standardized test scores in reading and language showed improvement.
- The teacher absenteeism rate was very low.
- All teachers attended 100 percent of in-service trainings offered.
- 75 percent of parents were involved in student activities.

Menu

- Menu monies were used solely for teacher compensation.