

# Pearce Elementary School District

Cochise County

Efficiency peer groups 11 and T-11, Achievement peer group 18

Legislative district(s): 14

District size, location:

Very small, Rural

Students attending:

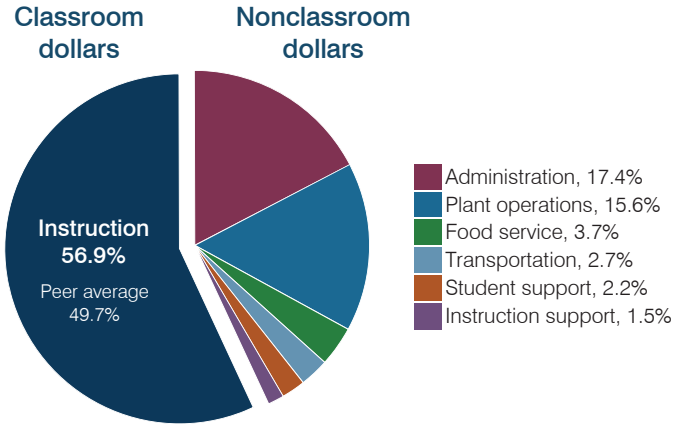
103

Number of schools:

1

## OPERATIONAL EFFICIENCY

### Spending by operational area



### Efficiency measures relative to peer averages

Operational area	Measure	District	Peer average	State average
Administration	Cost per pupil	\$2,251	\$2,987	\$806
	Students per administrative position	31	30	67
Plant operations	Cost per square foot	\$7.07	\$7.21	\$6.10
	Square footage per student	285	364	154
Food service	Cost per meal	\$3.25	\$5.54	\$2.81
	Cost per mile	\$1.26	\$1.75	\$3.72
Transportation	Cost per rider	\$584	\$1,495	\$1,092

### Per pupil spending

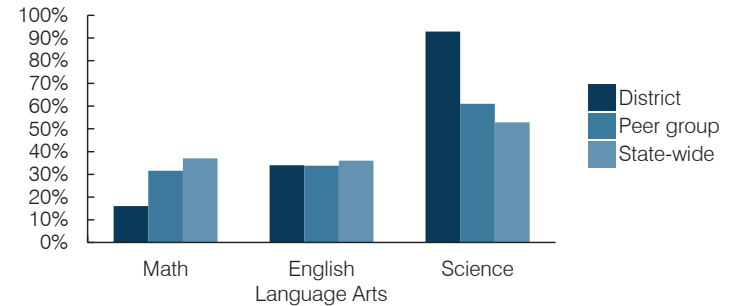
Spending by area	District		Peer average 2016	State average 2016
	2015	2016		
Instruction	\$ 7,120	\$ 7,377	\$ 8,342	\$ 4,145
Administration	2,323	2,251	2,987	806
Plant operations	2,041	2,017	2,523	939
Food service	526	482	918	415
Transportation	426	352	1,108	364
Student support	332	288	664	633
Instruction support	187	188	514	444
<b>Total operational</b>	<b>\$ 12,955</b>	<b>\$ 12,955</b>	<b>\$ 17,056</b>	<b>\$ 7,746</b>
Land and buildings	\$ 60	\$ 0	\$ 2,005	\$ 621
Equipment	270	289	819	400
Interest	3	24	31	216
Other	0	0	87	153
<b>Total nonoperational</b>	<b>\$ 333</b>	<b>\$ 313</b>	<b>\$ 2,942</b>	<b>\$ 1,390</b>
<b>Total per pupil spending</b>	<b>\$ 13,288</b>	<b>\$ 13,268</b>	<b>\$ 19,998</b>	<b>\$ 9,136</b>

## STUDENT AND TEACHER MEASURES, FINANCIAL ASSESSMENT, AND REVENUES

### Student and teacher measures

Measure	District	Peer average	State average
Attendance rate (2015)	94%	94%	94%
Graduation rate (2015)	N/A	N/A	N/A
Poverty rate (2015)	25%	25%	23%
Students per teacher	11.1	13.9	18.6
Average teacher salary	\$48,353	\$46,579	\$46,384
Amount from Proposition 301	\$4,250	\$4,701	\$5,315
Average years of teacher experience	12.6	12.1	11.0
Percentage of teachers in first 3 years	26%	14%	20%

### Students who passed state assessments



### Financial stress assessment

Overall financial stress level: **Moderate**

Measure: 2014 through 2016

Assessment

Change in number of district students	Small school adjustment
Spending exceeded operating/capital budgets	No overspending
Spending increase election results	No election held
Operating reserve percentage, Trend	Frozen taxes, Unfunded
Years of capital reserve held	1 to 3 years
Current financial and internal control status	Compliant

Low	Moderate	High
-----	----------	------

### Per pupil revenues

Revenues by source	District		Peer average 2016	State average 2016
	2015	2016		
Federal	\$ 910	\$ 866	\$ 3,667	\$ 1,301
State	3,824	4,411	6,156	3,780
Local	8,902	7,645	14,438	4,268
<b>Total revenues per pupil</b>	<b>\$ 13,636</b>	<b>\$ 12,922</b>	<b>\$ 24,261</b>	<b>\$ 9,349</b>

### Select revenues from common sources

Equalization formula funding	\$ 7,381	\$ 7,341	\$ 9,047	\$ 5,471
Grants	911	870	4,768	1,182
Donations and tax credits	104	134	186	86

### Select revenues from less common sources

	Number of peers receiving		
Desegregation	\$ 0	\$ 0	0 of 52
Small school adjustment	5,617	5,365	44 of 52
Federal impact aid	0	0	3 of 52
Voter-approved levy increases	0	0	7 of 52

**Classroom dollar percentage**

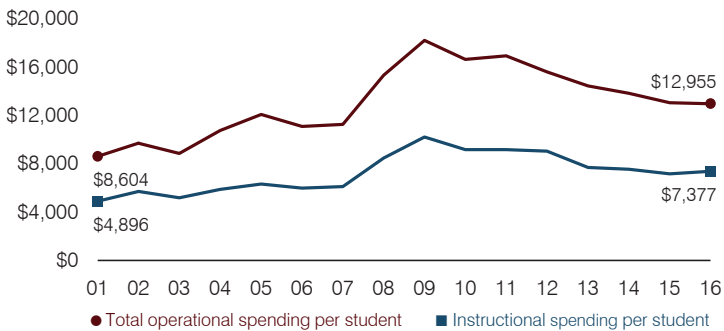
Year:	2001	2002	2003	2004	2005	2006	2007	2008	2009	2010	2011	2012	2013	2014	2015	2016
Percentage:	56.9	58.8	58.6	54.6	52.4	53.9	54.4	55.3	56.1	55.1	54.1	58.0	53.3	54.6	55.0	56.9

**OPERATIONAL TRENDS**  
Fiscal years as indicated

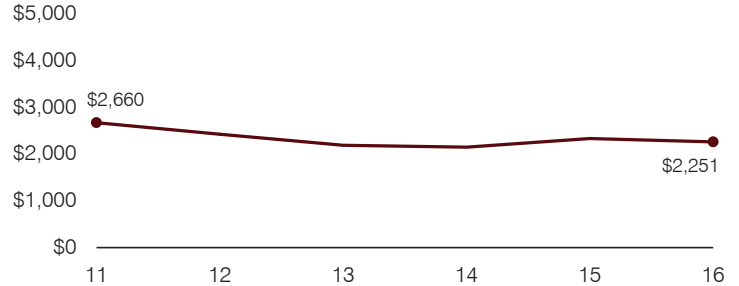
**5-year spending trend (2011 through 2016)**

Student enrollment increased by 25 percent, which contributed to the 23 percent decrease in total operational spending per pupil, adjusted for inflation. The percentage of dollars spent in the classroom varied year to year, increasing overall from 54.1 to 56.9 percent. As a percentage of total operational spending, all nonclassroom areas also varied year to year, as is common for very small districts.

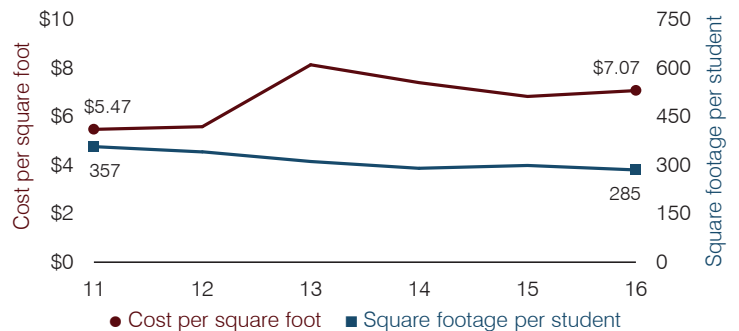
**Total operational and instructional spending per pupil (inflation adjusted to 2016 dollars)**



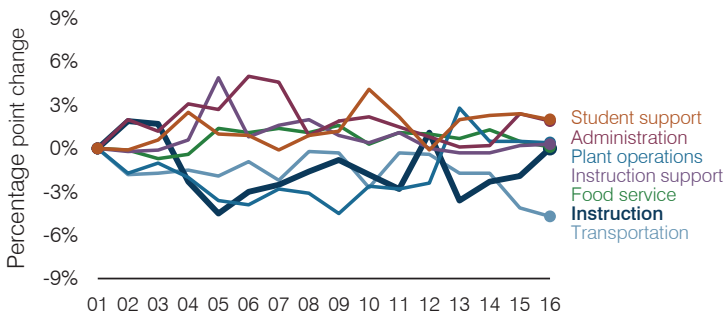
**Administrative cost per pupil**



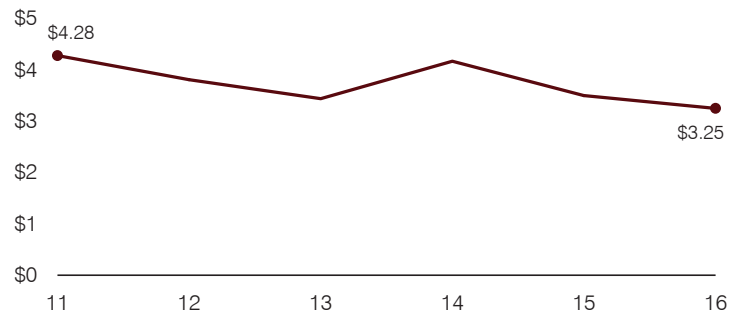
**Plant cost per square foot and square footage per student**



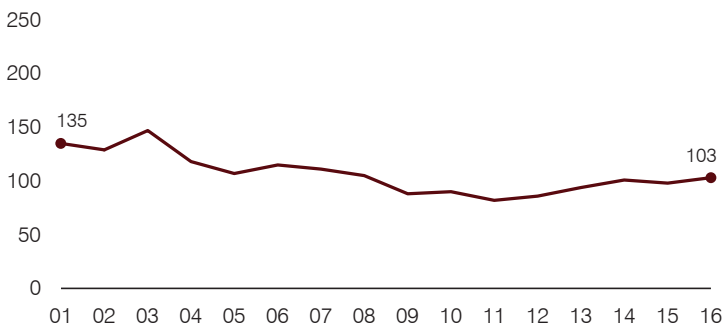
**Changes in operational spending percentages**



**Food service cost per meal**



**Students attending**



**Transportation costs per mile and per rider**

