

Pearce Elementary School District

Cochise County
Operational peer group: L
Legislative districts: 25

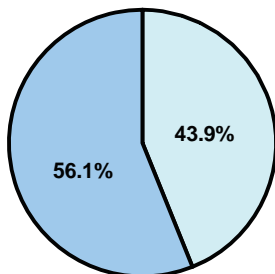
District size: Very Small
Students attending: 88
Number of schools: 1

OPERATIONAL EFFICIENCY

Average per-pupil spending

District
State

Classroom
\$9,192
\$4,497



Nonclassroom
\$7,196
\$3,411

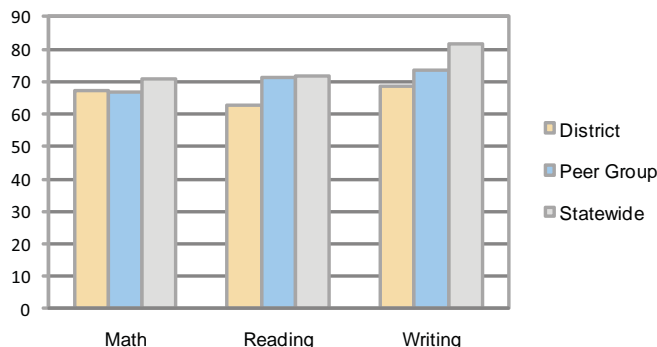
Total
\$16,388
\$7,908

5-year trend

Total spending per pupil almost doubled which is partially explained by the 25 percent decline in student enrollment. Spending in the classroom varied year to year and increased overall from 54.6 to 56.1 percent. Spending on administration, plant operations, and student support decreased, while spending in other nonclassroom areas varied year to year.

STUDENT ACHIEVEMENT AND TEACHER INFORMATION

Percentage of students meeting state standards (AIMS)



Adequate Yearly Progress (AYP) toward federal goals

The District's school met all applicable AYP objectives for NCLB.

Student and teacher information

Measure	District	Peer average	State average
Attendance rate	93%	94%	95%
Graduation rate (2008)	N/A	54%	75%
Poverty rate	22%	31%	19%
Student/teacher ratio	7.3	10.8	17.1
Average teacher salary	\$47,579	\$45,165	\$45,209
Average years' experience	11.6	12.7	8.3
Percent of teachers in first 3 years	9%	15%	16%

District's cost measures relative to peer group

Operational Area	Measure	District	Peer Average	State Average
Administration	Cost per pupil	\$2,857	\$2,656	\$729
	Students per administrator	16	32	66
Plant Operations	Cost per square foot	\$5.27	\$7.53	\$6.40
	Square footage per student	333	318	144
Food Service	Cost per meal equivalent	\$4.02	\$5.10	\$2.53
Transportation	Cost per mile	\$1.82	\$1.79	\$3.36
	Miles per rider	536	710	271

Very Low Low Comparable High Very High

Proposition 301

Teacher pay

On average, each teacher earned \$4,061 in additional salary.

Performance pay plan goals and results

Type of goal	Goal met?
Student achievement	■
Dropout/ graduation rates	
Student attendance	
Parent/student satisfaction	
Teacher attendance	
Teacher professional development	■
Teacher evaluations	■
Tutoring	
Other	

■ = yes, □ = no, and ▴ = partially

Per-pupil spending by function

	District		Peer	State	National
	2008	2009	2009	2009	2007
Total	\$13,601	\$16,388	\$16,311	\$7,908	\$9,683
Classroom dollars	\$7,518	\$9,192	\$8,757	\$4,497	\$5,903
Nonclassroom dollars:	\$6,083	\$7,196	\$7,554	\$3,411	\$3,780
Administration	2,233	2,857	2,656	729	1,050
Plant Operations	1,639	1,753	2,297	920	951
Food Service	644	847	859	382	369
Transportation	981	1,161	930	343	406
Student Support	153	235	474	594	512
Instruction Support	433	343	338	431	470
Other	0	0	0	12	22