

Pendergast Elementary School District

Maricopa County
Operational peer group: H
Legislative districts: 12, 13

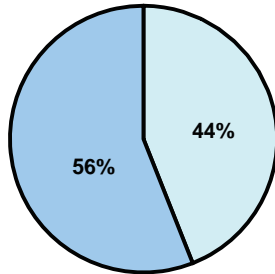
District size: Large
Students attending: 9,921
Number of schools: 14

OPERATIONAL EFFICIENCY

Average per-pupil spending

District
State

Classroom
\$4,129
\$4,497



Nonclassroom
\$3,241
\$3,411

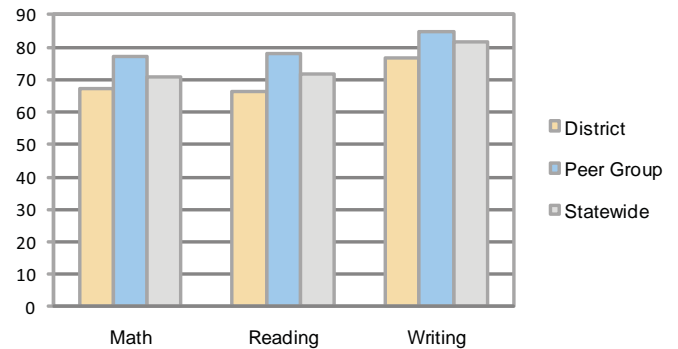
Total
\$7,370
\$7,908

5-year trend

Total spending per pupil increased by 34 percent. Spending in the classroom was fairly stable year to year and decreased significantly overall from 59.1 to 56 percent. Spending on instruction support increased significantly, while spending in other nonclassroom areas remained fairly stable.

STUDENT ACHIEVEMENT AND TEACHER INFORMATION

Percentage of students meeting state standards (AIMS)



Adequate Yearly Progress (AYP) toward federal goals

11 schools met all applicable AYP objectives for NCLB. 3 did not because they failed to meet one or more of the following objectives: percentage of students tested (1); academic progress (2); attendance rate (3).

Student and teacher information

Measure	District	Peer average	State average
Attendance rate	95%	96%	95%
Graduation rate (2008)	N/A	85%	75%
Poverty rate	17%	13%	19%
Student/teacher ratio	17.8	17.3	17.1
Average teacher salary	\$48,331	\$45,833	\$45,209
Average years' experience	7.6	9.1	8.3
Percent of teachers in first 3 years	36%	27%	16%

District's cost measures relative to peer group

Operational Area	Measure	District	Peer Average	State Average
Administration	Cost per pupil	\$691	\$705	\$729
	Students per administrator	83	67	66
Plant Operations	Cost per square foot	\$6.62	\$6.62	\$6.40
	Square footage per student	112	120	144
Food Service	Cost per meal equivalent	\$2.56	\$2.44	\$2.53
Transportation	Cost per mile	\$4.65	\$4.77	\$3.36
	Miles per rider	179	197	271

Very Low Low Comparable High Very High

Per-pupil spending by function

	District		Peer	State	National
	2008	2009	2009	2009	2007
Total	\$6,796	\$7,370	\$7,808	\$7,908	\$9,683
Classroom dollars	\$3,823	\$4,129	\$4,486	\$4,497	\$5,903
Nonclassroom dollars:	\$2,973	\$3,241	\$3,322	\$3,411	\$3,780
Administration	671	691	705	729	1,050
Plant Operations	663	738	786	920	951
Food Service	464	494	494	382	369
Transportation	187	177	272	343	406
Student Support	532	545	536	594	512
Instruction Support	456	596	529	431	470
Other	0	0	0	12	22

Proposition 301

Teacher pay

On average, each teacher earned \$5,386 in additional salary, and each librarian, speech pathologist, counselor, instructional coach, and inclusion specialist earned between \$4,125 and \$4,837.

Performance pay plan goals and results

Type of goal	Goal met?
Student achievement	■
Dropout/ graduation rates	
Student attendance	
Parent/student satisfaction	■
Teacher attendance	
Teacher professional development	
Teacher evaluations	
Tutoring	
Other	

■ = yes, □ = no, and ▤ = partially