

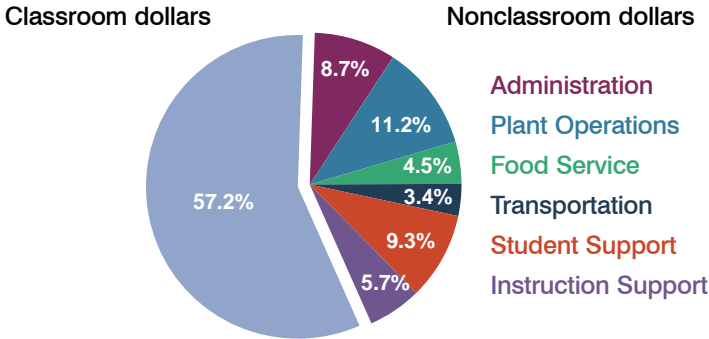
Peoria Unified School District

Maricopa County
Peer groups: Efficiency Group 1, Achievement Group 2
Legislative district(s): 4, 9, 10 and 12

District size: Very Large
Students attending: 35,378
Number of schools: 39

OPERATIONAL EFFICIENCY

Spending by operational area



5-year trend

Total spending per pupil increased by 5 percent. Spending in the classroom varied year to year, decreasing significantly overall from 60.6 to 57.2 percent. Spending on plant operations increased, while spending on other nonclassroom areas remained stable.

District's cost measures relative to peer group

Operational Area	Measure	District	Peer Average	State Average
Administration	Cost per pupil	\$591	\$613	\$728
	Students per administrator	92	81	66
Plant Operations	Cost per square foot	\$5.72	\$6.03	\$6.10
	Square footage per student	133	142	152
Food Service	Cost per meal equivalent	\$2.59	\$2.42	\$2.45
Transportation	Cost per mile	\$3.30	\$3.96	\$3.39
	Miles per rider	315	279	283

Very low Low Comparable High Very high

Per-pupil spending by operational area

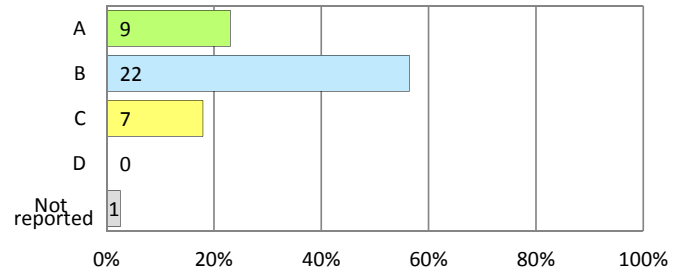
	District		Peer 2011	State 2011	National 2009
	2010	2011			
Total	\$6,639	\$6,773	\$7,123	\$7,485	\$10,591
Classroom dollars	\$3,958	\$3,872	\$4,080	\$4,098	\$6,456
Nonclassroom dollars:	\$2,681	\$2,901	\$3,043	\$3,387	\$4,135
Administration	541	591	613	728	1,147
Plant Operations	705	761	855	927	1,033
Food Service	274	308	317	375	404
Transportation	220	234	330	352	443
Student Support	605	627	556	571	573
Instruction Support	336	380	372	434	535

STUDENT ACHIEVEMENT AND TEACHER INFORMATION

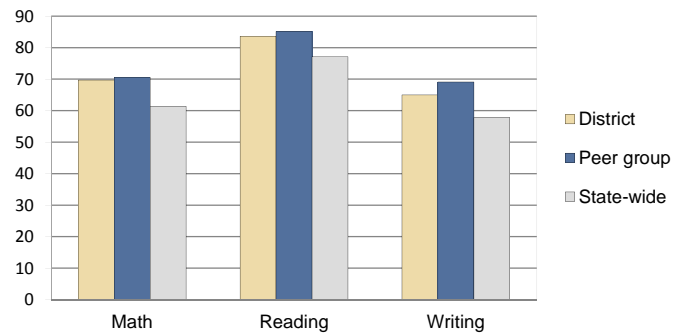
District and school letter grades

District grade: **B**

School grades (number and percentage):



Percentage of students meeting state standards (AIMS)



Student and teacher information

Measure	District	Peer Average	State Average
Attendance rate	95%	95%	95%
Graduation rate (2010)	95%	90%	78%
Poverty rate (2010)	14%	13%	22%
Students per teacher	17.9	18.2	18.1
Average teacher salary	\$44,474	\$46,027	\$45,637
Average years of experience	9.1	10.8	10.9
Percent of teachers in first 3 years	26%	16%	16%

Proposition 301 pay, goals, and results

Average additional salary earned by teachers: \$3,880

Type of goal	Goal met?
Student achievement	▀
Dropout/graduation rates	-
Student attendance	-
Parent/student satisfaction	-
Teacher attendance	-
Teacher professional development	▀
Teacher evaluations	▀
Tutoring	-
Other	-

■ = yes, □ = no, ▀ = partially, and - = no goal set