

# Peoria Unified School District

Maricopa County

Efficiency peer groups 1 and T-4, Achievement peer group 2<sup>1</sup>

Legislative district(s): 20, 21, 22, and 29

District size, location:

Very large, Suburb

Students attending:

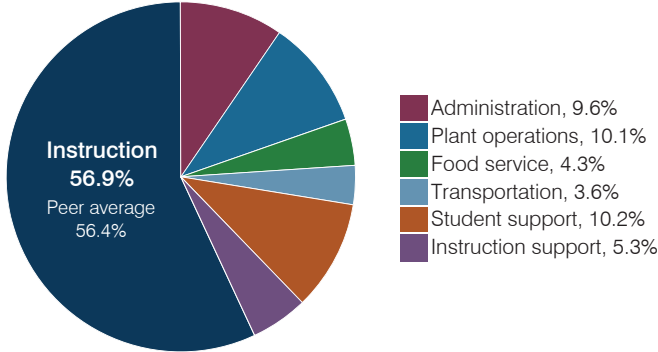
35,283

Number of schools:

41

## OPERATIONAL EFFICIENCY

### Spending by operational area



### Efficiency measures relative to peer averages

Operational area	Measure	District	Peer average	State average
Administration	Cost per pupil	\$723	\$680	\$844
	Students per administrative position	91	80	67
Plant operations	Cost per square foot	\$5.70	\$6.15	\$6.30
	Square footage per student	133	147	155
Food service	Cost per meal	\$2.92	\$2.79	\$2.88
Transportation	Cost per mile	\$3.85	\$3.61	\$3.84
	Cost per rider	\$1,361	\$1,278	\$1,198

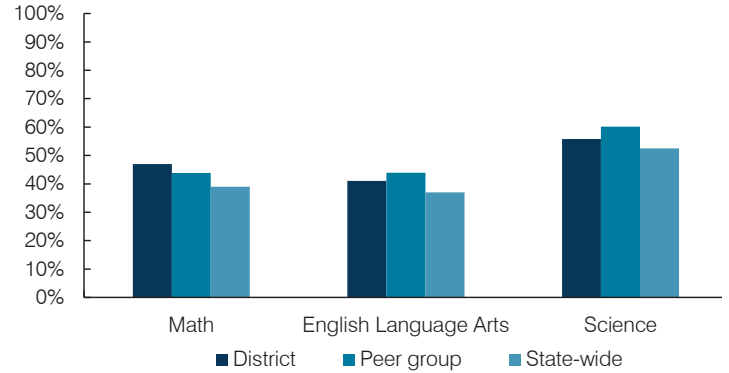
Very low   Low   Comparable   High   Very high

### Per pupil spending

Spending by area	District		Peer average 2017	State average 2017
	2016	2017		
Instruction	\$ 3,904	\$ 4,288	\$ 4,386	\$ 4,377
Administration	731	723	680	844
Plant operations	701	760	877	977
Food service	317	325	323	422
Transportation	237	271	341	381
Student support	708	773	679	679
Instruction support	347	394	358	461
<b>Total operational</b>	<b>\$ 6,945</b>	<b>\$ 7,534</b>	<b>\$ 7,644</b>	<b>\$ 8,141</b>
Land and buildings	\$ 721	\$ 603	\$ 651	\$ 691
Equipment	356	426	393	424
Interest	274	275	223	236
Other	182	152	209	161
<b>Total nonoperational</b>	<b>\$ 1,533</b>	<b>\$ 1,456</b>	<b>\$ 1,476</b>	<b>\$ 1,512</b>
<b>Total per pupil spending</b>	<b>\$ 8,478</b>	<b>\$ 8,990</b>	<b>\$ 9,120</b>	<b>\$ 9,653</b>

## STUDENT ACHIEVEMENT, STUDENT AND TEACHER MEASURES, AND REVENUES

### Students who passed state assessments



### Student and teacher measures

Measure	District	Peer average	State average
Attendance rate	95%	95%	94%
Graduation rate (2016)	94%	90%	80%
Poverty rate (2016)	14%	13%	22%
Special education population	12%	12%	12%
Students per teacher	18.2	18.4	18.5
Average teacher salary	\$48,595	\$46,837	\$48,372
Amount from Prop 301	\$6,332	\$6,016	\$5,840
Average years of teacher experience	11.3	11.3	11.3
Percentage of teachers in first 3 years	17%	18%	19%

### Per pupil revenues

Revenues by source	District		Peer average 2017	State average 2017
	2016	2017		
Federal	\$ 652	\$ 653	\$ 885	\$ 1,318
State	3,909	3,916	3,394	3,831
Local	3,787	4,011	5,302	4,443
<b>Total per pupil revenues</b>	<b>\$ 8,348</b>	<b>\$ 8,580</b>	<b>\$ 9,581</b>	<b>\$ 9,592</b>

#### Select revenues from common sources

	District	Peer average	State average
Equalization formula funding	\$ 5,153	\$ 5,199	\$ 5,387
Amount from Prop 123	235	238	241
Prop 123 additional funding	46	46	46
Grants	692	709	901
Donations and tax credits	90	88	98

#### Select revenues from less common sources

	District	Peer average	Number of peers receiving
Desegregation	\$ 0	\$ 0	4 of 10
Small school adjustment	0	0	0 of 10
Federal impact aid	0	0	2 of 10
Voter-approved levy increases	1,192	1,433	10 of 10

<sup>1</sup> See Appendix A for information such as districts included in each peer group and Appendix B for sources and methodology.

**Instructional spending percentage**

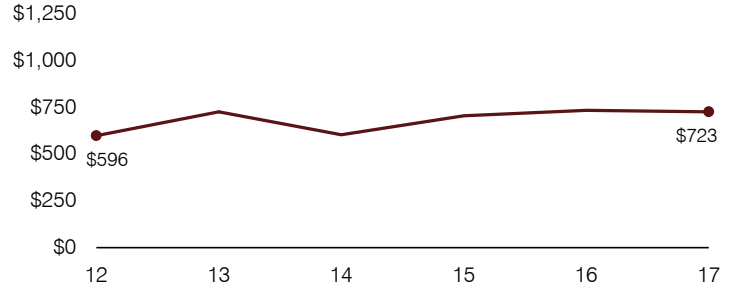
Year:	2001	2002	2003	2004	2005	2006	2007	2008	2009	2010	2011	2012	2013	2014	2015	2016	2017
Percentage:	61.9	61.5	61.4	61.5	60.0	60.6	59.6	59.8	60.5	59.6	57.2	57.6	56.0	57.9	54.9	56.2	56.9

**OPERATIONAL TRENDS AND FINANCIAL STRESS ASSESSMENT**  
Fiscal years as indicated

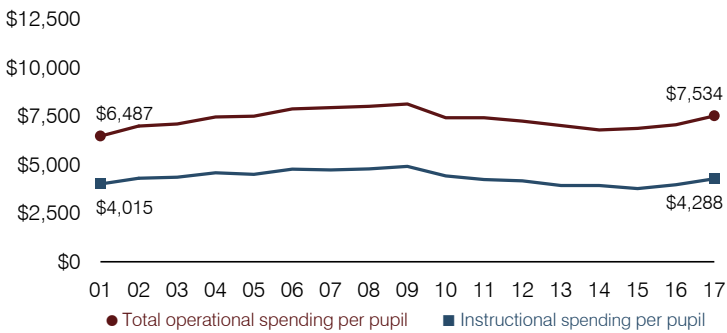
**5-year spending trend (2012 through 2017)**

Total operational spending per pupil, adjusted for inflation, increased by 4 percent. The percentage of dollars spent on instruction varied year to year, decreasing slightly overall from 57.6 to 56.9 percent. Overall, as a percentage of total operational spending, student support increased and administration increased slightly, while plant operations decreased. Other noninstructional areas remained stable.

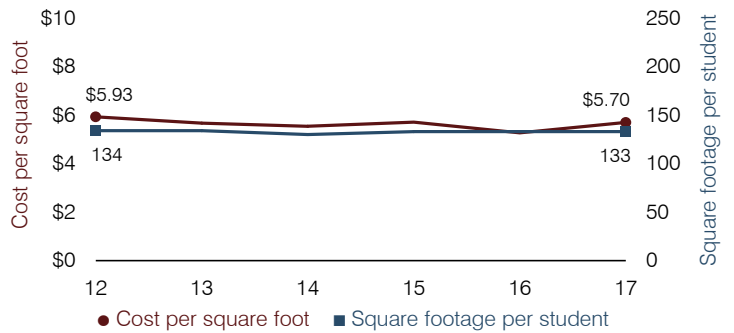
**Administrative cost per pupil**



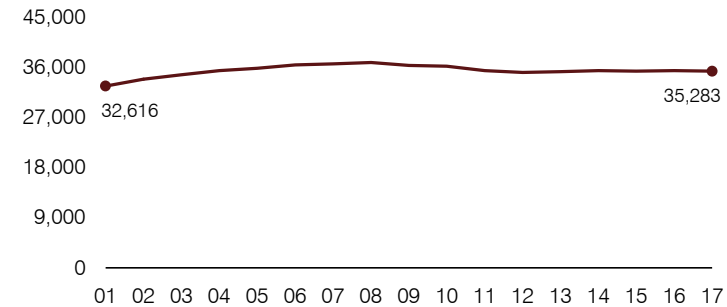
**Total operational and instructional spending per pupil (inflation adjusted to 2017 dollars)**



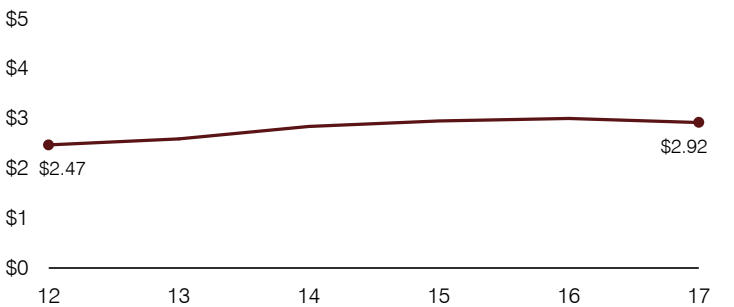
**Plant cost per square foot and square footage per student**



**Students attending**



**Food service cost per meal**



**Financial stress assessment**

Overall financial stress level: **Moderate**

Measure: 2015 through 2017

	Assessment
Change in number of district students	Steady
Spending exceeded operating/capital budgets	No overspending
Spending increase election results	Mixed election results
Operating reserve percentage, Trend	1.7%, Varying
Years of capital reserve held	1 to 3 years
Current financial and internal control status	Compliant

Low	Moderate	High
-----	----------	------

**Transportation costs per mile and per rider**

