

# Peoria Unified School District

Maricopa County  
Operational peer group: A  
Legislative districts: 4, 9, 10, 12

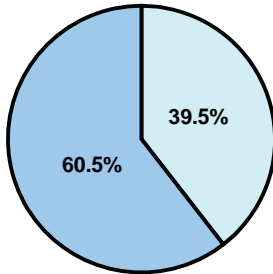
District size: Very Large  
Students attending: 36,336  
Number of schools: 38

## OPERATIONAL EFFICIENCY

### Average per-pupil spending

District  
State

**Classroom**  
\$4,357  
\$4,497



**Nonclassroom**  
\$2,849  
\$3,411

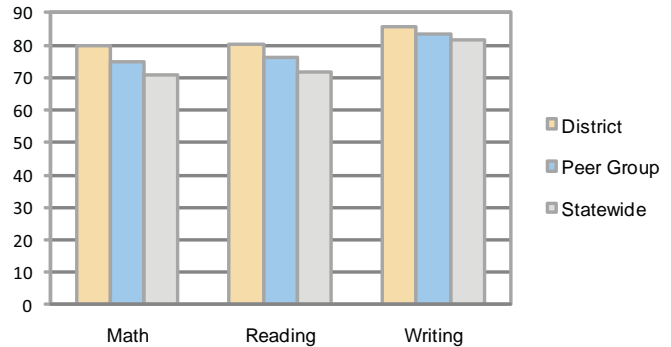
**Total**  
\$7,206  
\$7,908

### 5-year trend

Total spending per pupil increased by 26 percent. Spending in the classroom was fairly stable and decreased slightly overall from 61.5 to 60.5 percent. Spending on student support increased, while spending in other nonclassroom areas remained fairly stable.

## STUDENT ACHIEVEMENT AND TEACHER INFORMATION

### Percentage of students meeting state standards (AIMS)



### Adequate Yearly Progress (AYP) toward federal goals

34 schools met all applicable AYP objectives for NCLB. 4 did not because they failed to meet one or more of the following objectives: percentage of students tested (1); academic progress (3); attendance rate (1).

### Student and teacher information

Measure	District	Peer average	State average
Attendance rate	96%	96%	95%
Graduation rate (2008)	91%	86%	75%
Poverty rate	11%	14%	19%
Student/teacher ratio	17.8	17.5	17.1
Average teacher salary	\$49,589	\$50,748	\$45,209
Average years' experience	9.3	10.5	8.3
Percent of teachers in first 3 years	27%	20%	16%

### District's cost measures relative to peer group

Operational Area	Measure	District	Peer Average	State Average
Administration	Cost per pupil	\$557	\$639	\$729
	Students per administrator	92	77	66
Plant Operations	Cost per square foot	\$5.88	\$6.38	\$6.40
	Square footage per student	126	138	144
Food Service	Cost per meal equivalent	\$2.34	\$2.49	\$2.53
Transportation	Cost per mile	\$3.76	\$4.22	\$3.36
	Miles per rider	292	298	271

Very Low    Low    Comparable    High    Very High

### Per-pupil spending by function

	District		Peer	State	National
	2008	2009	2009	2009	2007
<b>Total</b>	<b>\$7,005</b>	<b>\$7,206</b>	<b>\$7,781</b>	<b>\$7,908</b>	<b>\$9,683</b>
<b>Classroom dollars</b>	<b>\$4,187</b>	<b>\$4,357</b>	<b>\$4,577</b>	<b>\$4,497</b>	<b>\$5,903</b>
<b>Nonclassroom dollars:</b>	<b>\$2,818</b>	<b>\$2,849</b>	<b>\$3,204</b>	<b>\$3,411</b>	<b>\$3,780</b>
Administration	535	557	639	729	1,050
Plant Operations	781	742	881	920	951
Food Service	264	270	322	382	369
Transportation	241	251	330	343	406
Student Support	606	634	616	594	512
Instruction Support	382	386	398	431	470
Other	9	9	18	12	22

### Proposition 301

#### Teacher pay

On average, each teacher, librarian, speech pathologist, audiologist, counselor, and instructional specialist earned between \$5,973 and \$8,260 in additional salary.

#### Performance pay plan goals and results

Type of goal	Goal met?
Student achievement	▲
Dropout/ graduation rates	
Student attendance	
Parent/student satisfaction	
Teacher attendance	
Teacher professional development	▲
Teacher evaluations	▲
Tutoring	
Other	

■ = yes, □ = no, and ▲ = partially