

Phoenix Elementary School District

Maricopa County
Operational peer group: I
Legislative districts: 14, 15, 16

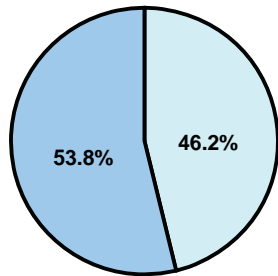
District size: Medium-Large
Students attending: 7,499
Number of schools: 16

OPERATIONAL EFFICIENCY

Average per-pupil spending

District
State

Classroom
\$5,647
\$4,497



Nonclassroom
\$4,847
\$3,411

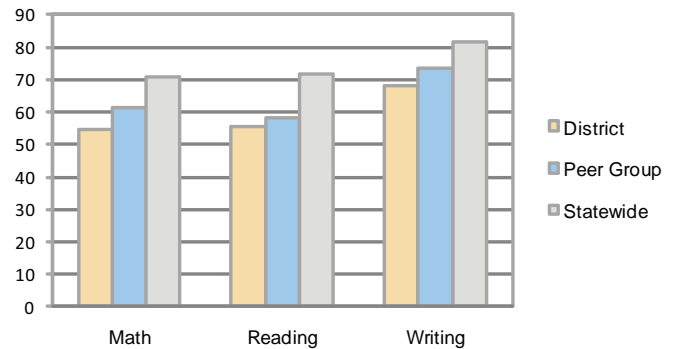
Total
\$10,494
\$7,908

5-year trend

Total spending per pupil increased by 30 percent. Spending in the classroom was very inconsistent year to year and decreased overall from 55.3 to 53.8 percent. Spending on administration decreased, spending on instruction support increased significantly, and spending in other nonclassroom areas remained fairly stable.

STUDENT ACHIEVEMENT AND TEACHER INFORMATION

Percentage of students meeting state standards (AIMS)



Adequate Yearly Progress (AYP) toward federal goals

10 schools met all applicable AYP objectives for NCLB. 5 did not because some students did not demonstrate sufficient academic progress. 1 school was not eligible for AYP determination.

Student and teacher information

Measure	District	Peer average	State average
Attendance rate	95%	95%	95%
Graduation rate (2008)	N/A	86%	75%
Poverty rate	46%	31%	19%
Student/teacher ratio	15.6	16.2	17.1
Average teacher salary	\$50,570	\$46,306	\$45,209
Average years' experience	9.6	8.5	8.3
Percent of teachers in first 3 years	32%	33%	16%

District's cost measures relative to peer group

Operational Area	Measure	District	Peer Average	State Average
Administration	Cost per pupil	\$826	\$840	\$729
	Students per administrator	51	69	66
Plant Operations	Cost per square foot	\$7.62	\$7.16	\$6.40
	Square footage per student	154	123	144
Food Service	Cost per meal equivalent	\$2.03	\$2.38	\$2.53
Transportation	Cost per mile	\$7.36	\$5.18	\$3.36
	Miles per rider	123	132	271

Very Low Low Comparable High Very High

Proposition 301

Teacher pay

On average, each teacher earned \$7,175 in additional salary, which includes performance pay for fiscal year 2008 performance.

Performance pay plan goals and results

Type of goal	Goal met?
Student achievement	■
Dropout/ graduation rates	■
Student attendance	■
Parent/student satisfaction	■
Teacher attendance	▲
Teacher professional development	■
Teacher evaluations	▲
Tutoring	■
Other	■

■ = yes, □ = no, and ▲ = partially

Per-pupil spending by function

	District		Peer	State	National
	2008	2009	2009	2009	2007
Total	\$10,325	\$10,494	\$8,194	\$7,908	\$9,683
Classroom dollars	\$5,810	\$5,647	\$4,515	\$4,497	\$5,903
Nonclassroom dollars:	\$4,515	\$4,847	\$3,679	\$3,411	\$3,780
Administration	785	826	840	729	1,050
Plant Operations	1,202	1,174	890	920	951
Food Service	513	495	525	382	369
Transportation	310	269	253	343	406
Student Support	890	970	626	594	512
Instruction Support	811	1,112	545	431	470
Other	4	1	0	12	22