

Classroom Dollars and Proposition 301 Results

Phoenix Elementary School District

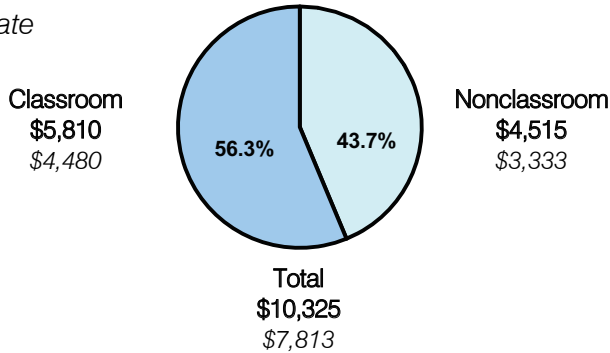
Maricopa County

District size: Large
 Students attending: 7,493
 Number of schools: 16
 Number of certified teachers: 483

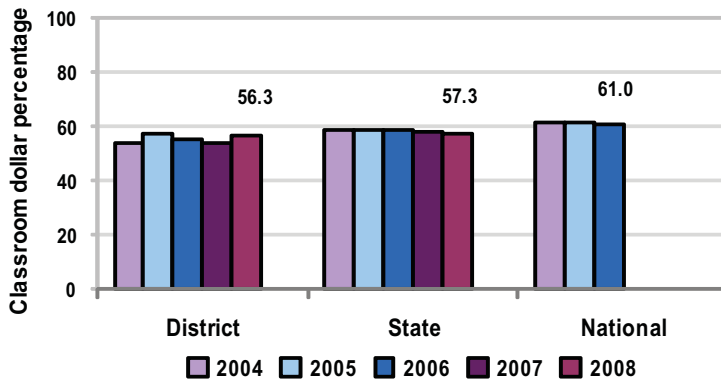
Classroom Dollars

Fiscal year 2008 averages per pupil

District
 State



5-year comparison



Expenditures by function

	Percentage					State 2008	National 2006
	2004	2005	2006	2007	2008		
Classroom dollars	54.1	57.1	55.1	54.0	56.3	57.3	61.0
Nonclassroom dollars:							
Administration	11.3	10.0	10.1	9.7	7.6	9.2	10.8
Plant operations	11.9	11.2	11.6	11.3	11.6	11.3	9.9
Food service	6.7	5.8	5.5	4.9	5.0	4.8	3.8
Transportation	2.9	3.0	3.2	2.7	3.0	4.4	4.2
Student support	7.5	7.7	7.5	8.8	8.6	7.4	5.2
Instruction support	5.6	5.2	6.8	8.6	7.9	5.4	4.9
Other			0.2			0.2	0.2

Comparative Information

	District			State
	2006	2007	2008	2008
Student/teacher ratio	20.6	17.0	15.5	17.3
Average teacher salary	\$46,865	\$47,762	\$49,695	\$44,967
Average years' experience	8.2	7.9	7.5	8.1

Classroom dollar ranking: 95 of 230 districts.

Proposition 301

District-reported 2008 results

Teacher pay

- On average, each teacher, counselor, and literacy and math coach earned between \$7,012 and \$7,062 in additional salary, which includes performance pay for fiscal year 2007 performance.

Performance

- The District accomplished its goals, which were based on school and individual performance.
- The District's student achievement goal was linked to AZ LEARNS, Adequate Yearly Progress objectives, and students' standardized test scores.
- Based on survey results, at least 70 percent of parents were satisfied with the District's performance.
- Teachers completed at least 40 hours of approved professional development activities.
- Teachers were compensated for being absent no more than 6 days during the school year.

Menu

- Monies were used solely for increasing eligible employee compensation.