

Classroom Dollars and Proposition 301 Results

Phoenix Elementary School District

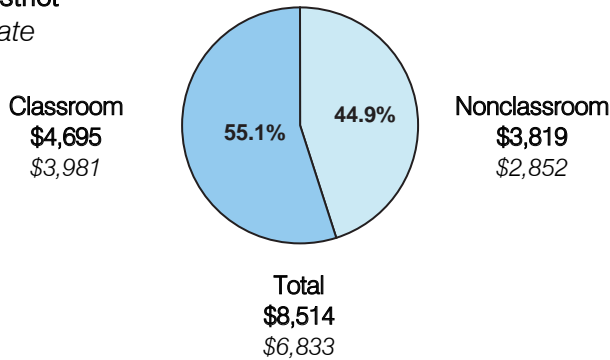
Maricopa County

District size: Large
 Students attending: 7,876
 Number of schools: 15
 Number of certified teachers: 382

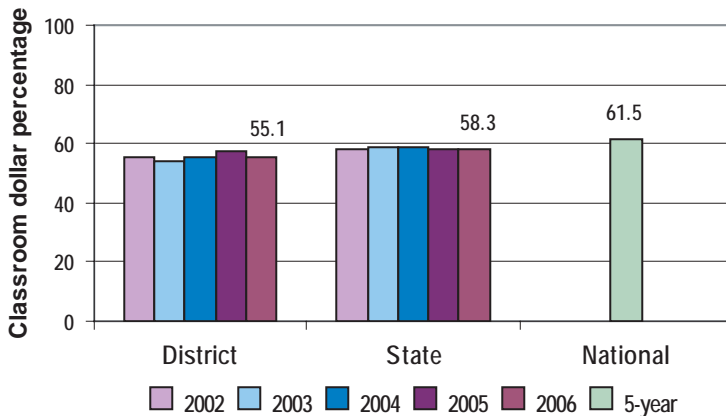
Classroom Dollars

Fiscal year 2006 averages per pupil

District
 State



5-year comparison



Expenditures by function

	District					State 2006	National 5-year
	2002	2003	2004	2005	2006		
Classroom dollars	55.3	54.3	54.1	57.1	55.1	58.3	61.5
Nonclassroom dollars:							
Administration	10.0	9.6	11.3	10.0	10.1	9.4	11.0
Plant operations	12.2	12.8	11.9	11.2	11.6	11.2	9.6
Food service	6.9	6.7	6.7	5.8	5.5	4.7	3.9
Transportation	2.8	2.9	2.9	3.0	3.2	4.2	4.0
Student support	6.1	5.7	7.5	7.7	7.5	7.2	5.1
Instruction support	6.7	8.0	5.6	5.2	6.8	4.8	4.7
Other					0.2	0.2	0.2

Comparative Information

	District			State 2006
	2004	2005	2006	
Student/teacher ratio	16.4	18.3	20.6	17.7
Average teacher salary	\$43,177	\$45,017	\$46,865	\$42,967
Average years' experience	10.7	7.7	8.2	8.3

Classroom dollar ranking: 116 of 229 districts.

Proposition 301

District-reported 2006 results

Teacher pay

- On average, each teacher, librarian, speech pathologist, audiologist, and counselor earned an additional \$5,376 in salary.

Performance

- The District accomplished its goals, which were based on fiscal year 2005 school and individual performance.
- Schools achieved Adequate Yearly Progress and a "performing" or better label from ADE for AZ LEARNS.
- Teachers completed at least 40 hours of approved professional development activities.

Menu

- Monies were used solely for increasing eligible employee compensation.