

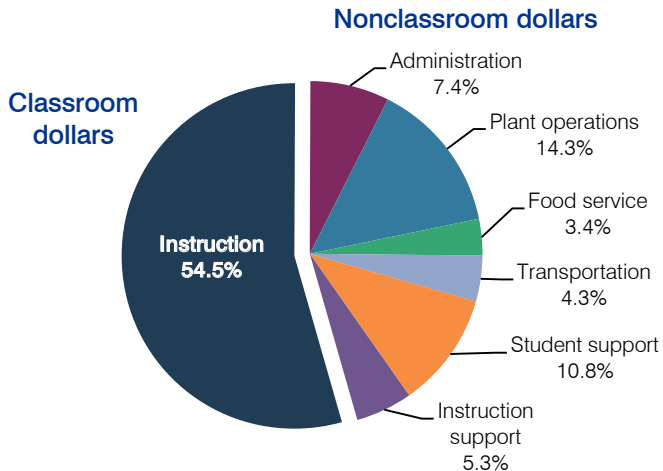
# Phoenix Union High School District

Maricopa County  
 Efficiency peer groups 1 and T-5, Achievement peer group 10  
 Legislative district(s): 19, 24, 27, 28, 29 and 30

District size / location: Very large, City  
 Students attending: 25,499  
 Number of schools: 15

## OPERATIONAL EFFICIENCY

### Spending by operational area



### 5-year spending trend

Total spending per pupil decreased by 4 percent. Spending in the classroom varied year to year, decreasing overall from 57.5 to 54.5 percent. Spending on plant operations and food service increased, while spending on other nonclassroom areas remained stable.

### Cost measures relative to peer averages

Operational area	Measure	District	Peer average	State average
Administration	Cost per pupil	\$707	\$620	\$736
	Students per administrator	38	79	66
Plant operations	Cost per square foot	\$8.07	\$5.88	\$6.09
	Square footage per student	168	144	152
Food service	Cost per meal equivalent	\$2.33	\$2.46	\$2.47
Transportation	Cost per mile	N/A	\$3.54	\$3.50
	Cost per rider	\$954	\$1,372	\$982

Very low   Low   Comparable   High   Very high

### Per-pupil spending by operational area

	District		Peer average	State average	National average
	2011	2012	2012	2012	2010
<b>Total</b>	<b>\$9,835</b>	<b>\$9,477</b>	<b>\$7,111</b>	<b>\$7,475</b>	<b>\$10,652</b>
<b>Classroom dollars</b>	<b>5,529</b>	<b>5,162</b>	<b>4,052</b>	<b>4,053</b>	<b>6,526</b>
<b>Nonclassroom dollars:</b>	<b>4,306</b>	<b>4,315</b>	<b>3,059</b>	<b>3,422</b>	<b>4,126</b>
Administration	692	707	620	736	1,139
Plant operations	1,289	1,357	843	928	1,012
Food service	318	323	321	382	405
Transportation	431	407	340	362	443
Student support	1,031	1,024	567	578	592
Instruction support	545	497	368	436	535

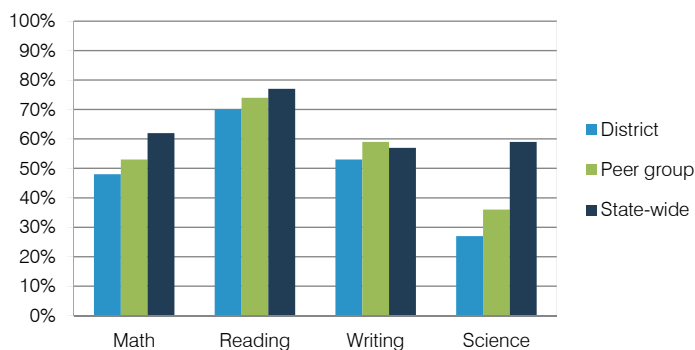
## STUDENT ACHIEVEMENT, TEACHER MEASURES, AND FINANCIAL ASSESSMENT

### ADE-reported district and school letter grades

District grade: **C**

Grade	Number of schools	Percentage of schools
A	1	7%
B	4	27%
C	7	47%
D	1	7%
F	0	0%
Not rated	2	13%

### Percentage of students who met state standards (AIMS)



### Student and teacher measures

Measure	District	Peer average	State average
Attendance rate	94%	95%	94%
Graduation rate (2011)	80%	82%	78%
Poverty rate (2011)	37%	32%	25%
Students per teacher	18.1	20.9	18.1
Average teacher salary	\$55,566	\$49,006	\$45,193
Amount from Proposition 301	\$1,006	\$3,442	\$3,195
Average years of teacher experience	12.5	11.1	11.0
Percentage of teachers in first 3 years	6%	15%	16%

### Financial stress assessment

Overall financial stress level: **Low**

Measure: 2010 through 2012	Assessment
Number of students attending	Steady
Spending exceeded operating/capital budgets	No overspending
Spending increase election results	Mixed election results
Operating reserve percentage (max. 4%), trend	3.9%, Steady
Years of capital reserve held	More than 3 years
Current financial and internal control status	Compliant

