

Classroom Dollars and Proposition 301 Results

Phoenix Union High School District

Maricopa County

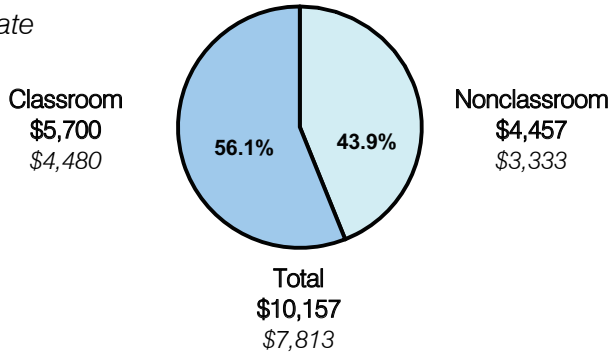
District size: Very Large
 Students attending: 24,702
 Number of schools: 15
 Number of certified teachers: 1,440

Classroom Dollars

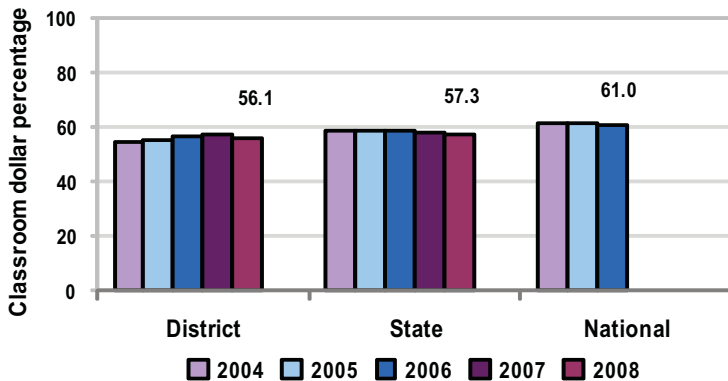
Fiscal year 2008 averages per pupil

District

State



5-year comparison



Expenditures by function

	District					State 2008	National 2006
	2004	2005	2006	2007	2008		
Classroom dollars	54.3	55.3	56.8	57.1	56.1	57.3	61.0
Nonclassroom dollars:							
Administration	7.8	8.7	7.9	7.8	8.3	9.2	10.8
Plant operations	14.6	13.8	12.8	12.6	12.9	11.3	9.9
Food service	2.3	2.4	2.5	2.3	2.6	4.8	3.8
Transportation	3.6	3.4	3.6	3.8	4.2	4.4	4.2
Student support	11.2	10.3	10.4	10.6	10.2	7.4	5.2
Instruction support	5.7	5.6	5.6	5.4	5.3	5.4	4.9
Other	0.5	0.5	0.4	0.4	0.4	0.2	0.2

Comparative Information

	District			State 2008
	2006	2007	2008	
Student/teacher ratio	16.8	17.3	17.2	17.3
Average teacher salary	\$55,690	\$57,209	\$59,736	\$44,967
Average years' experience	11.3	10.3	9.8	8.1

Classroom dollar ranking: 100 of 230 districts.

Proposition 301

District-reported 2008 results

Teacher pay

- On average, each teacher earned an additional \$5,882 in salary.

Performance

- The District accomplished most of its goals, which were the same as the prior fiscal year's goals and were based on school and individual performance.
- At least 80 percent of students had to demonstrate proficiency in reading, writing, and math on the AIMS test or show at least 7 percent growth over the prior year's test scores.
- Teachers were paid for being absent no more than 7 days during the school year.
- Other goals were linked to dropout/graduation and student attendance rates, and parent/student satisfaction.

Menu

- Monies were used primarily to increase eligible certified employee compensation.
- Certified staff were eligible to participate in 1 to 2 days of professional development activities.
- For AIMS intervention, the District implemented an academic mentoring program, which provided before- and after-school mentoring as well as Saturday school sessions. 38 percent of the student population attended at least 1 mentoring session.