

Picacho Elementary School District

Pinal County
Operational peer group: K
Legislative districts: 23

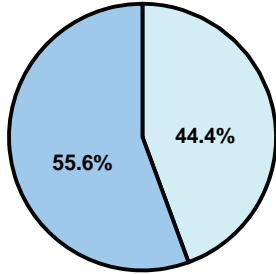
District size: Small
Students attending: 212
Number of schools: 1

OPERATIONAL EFFICIENCY

Average per-pupil spending

District
State

Classroom
\$5,408
\$4,497



Nonclassroom
\$4,320
\$3,411

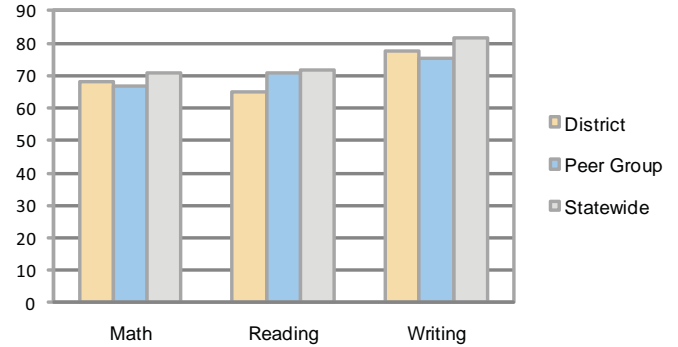
Total
\$9,728
\$7,908

5-year trend

Although student enrollment was stable, total spending per pupil increased by 47 percent. Spending in the classroom was very inconsistent year to year and increased significantly overall from 48.5 to 55.6 percent. Spending on plant operations and instruction support decreased significantly, while spending in other nonclassroom areas varied year to year.

STUDENT ACHIEVEMENT AND TEACHER INFORMATION

Percentage of students meeting state standards (AIMS)



Adequate Yearly Progress (AYP) toward federal goals

The District's school met all applicable AYP objectives for NCLB.

Student and teacher information

Measure	District	Peer average	State average
Attendance rate	94%	95%	95%
Graduation rate (2008)	N/A	79%	75%
Poverty rate	18%	14%	19%
Student/teacher ratio	14.9	14.7	17.1
Average teacher salary	\$49,956	\$43,600	\$45,209
Average years' experience	11.8	10.7	8.3
Percent of teachers in first 3 years	11%	23%	16%

District's cost measures relative to peer group

Operational Area	Measure	District	Peer Average	State Average
Administration	Cost per pupil	\$1,459	\$1,288	\$729
	Students per administrator	50	70	66
Plant Operations	Cost per square foot	\$8.64	\$6.94	\$6.40
	Square footage per student	118	149	144
Food Service	Cost per meal equivalent	\$3.53	\$3.05	\$2.53
Transportation	Cost per mile	\$2.40	\$2.22	\$3.36
	Miles per rider	212	268	271

Very Low Low Comparable High Very High

Per-pupil spending by function

	District		Peer	State	National
	2008	2009	2009	2009	2007
Total	\$9,615	\$9,728	\$9,786	\$7,908	\$9,683
Classroom dollars	\$5,569	\$5,408	\$5,344	\$4,497	\$5,903
Nonclassroom dollars:	\$4,046	\$4,320	\$4,442	\$3,411	\$3,780
Administration	1,295	1,459	1,288	729	1,050
Plant Operations	980	1,017	1,162	920	951
Food Service	744	734	582	382	369
Transportation	516	505	512	343	406
Student Support	430	471	586	594	512
Instruction Support	81	134	311	431	470
Other	0	0	1	12	22

Proposition 301

Teacher pay

On average, each teacher earned an additional \$7,175 in salary.

Performance pay plan goals and results

Type of goal	Goal met?
Student achievement	
Dropout/ graduation rates	
Student attendance	■
Parent/student satisfaction	
Teacher attendance	▲
Teacher professional development	
Teacher evaluations	■
Tutoring	
Other	■

■ = yes, □ = no, and ▲ = partially