

# Classroom Dollars and Proposition 301 Results

## Picacho Elementary School District

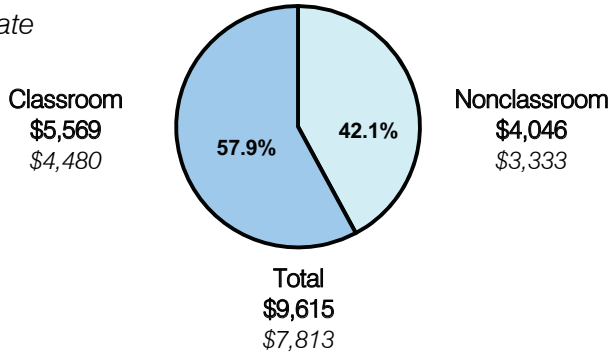
Pinal County

District size: Small  
 Students attending: 208  
 Number of schools: 1  
 Number of certified teachers: 13

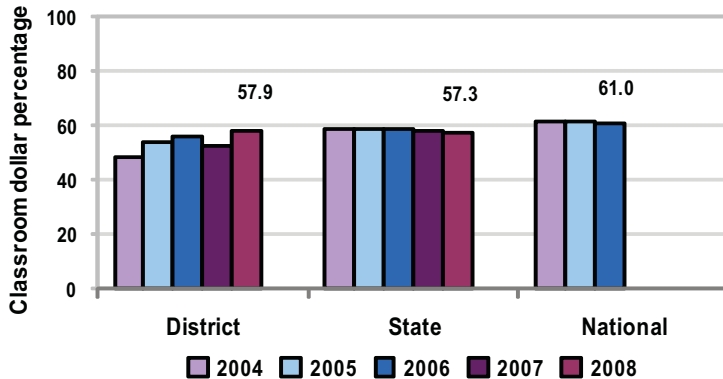
### Classroom Dollars

Fiscal year 2008 averages per pupil

District  
 State



5-year comparison



### Expenditures by function

|                       | Percentage |      |      |      |      | State 2008 | National 2006 |
|-----------------------|------------|------|------|------|------|------------|---------------|
|                       | District   |      |      |      |      |            |               |
|                       | 2004       | 2005 | 2006 | 2007 | 2008 |            |               |
| Classroom dollars     | 48.5       | 54.1 | 55.8 | 52.3 | 57.9 | 57.3       | 61.0          |
| Nonclassroom dollars: |            |      |      |      |      |            |               |
| Administration        | 15.5       | 13.6 | 15.2 | 17.9 | 13.5 | 9.2        | 10.8          |
| Plant operations      | 13.0       | 11.7 | 10.6 | 11.3 | 10.2 | 11.3       | 9.9           |
| Food service          | 7.6        | 7.6  | 6.7  | 7.4  | 7.7  | 4.8        | 3.8           |
| Transportation        | 6.0        | 6.2  | 6.8  | 5.7  | 5.4  | 4.4        | 4.2           |
| Student support       | 5.7        | 4.6  | 4.4  | 4.6  | 4.5  | 7.4        | 5.2           |
| Instruction support   | 3.7        | 2.2  | 0.5  | 0.8  | 0.8  | 5.4        | 4.9           |
| Other                 |            |      |      |      |      | 0.2        | 0.2           |

### Comparative Information

|                           | District |          |          | State 2008 |
|---------------------------|----------|----------|----------|------------|
|                           | 2006     | 2007     | 2008     |            |
| Student/teacher ratio     | 18.6     | 15.3     | 15.7     | 17.3       |
| Average teacher salary    | \$39,625 | \$45,304 | \$50,144 | \$44,967   |
| Average years' experience | 10.6     | 8.4      | 8.3      | 8.1        |

Classroom dollar ranking: 63 of 230 districts.

### Proposition 301

#### District-reported 2008 results

##### Teacher pay

- On average, each teacher earned an additional \$8,990 in salary.

##### Performance

- The District accomplished its goals, which were the same as the prior fiscal year's goals and were based on district and individual performance.
- The District earned a "Performing" label from ADE for AZ LEARNS.
- Another goal was tied to teacher attendance.

##### Menu

- Monies were used solely to increase teacher compensation.