

Pima Unified School District

Graham County
Operational peer group: E
Legislative districts: 5

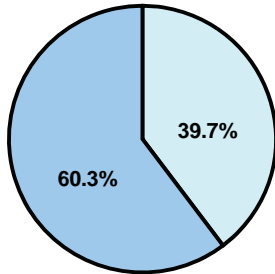
District size: Medium
Students attending: 726
Number of schools: 3

OPERATIONAL EFFICIENCY

Average per-pupil spending

District
State

Classroom
\$4,640
\$4,497



Nonclassroom
\$3,057
\$3,411

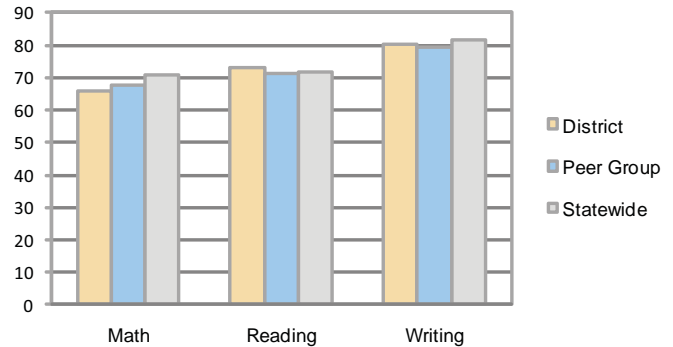
Total
\$7,697
\$7,908

5-year trend

Total spending per pupil increased by 20 percent. Spending in the classroom was very inconsistent year to year and increased overall from 58.7 to 60.3 percent. Spending on administration and plant operations decreased, while spending in other nonclassroom areas was fairly stable.

STUDENT ACHIEVEMENT AND TEACHER INFORMATION

Percentage of students meeting state standards (AIMS)



Adequate Yearly Progress (AYP) toward federal goals

2 schools met all applicable AYP objectives for NCLB. 1 did not because its graduation rate was not sufficient.

Student and teacher information

Measure	District	Peer average	State average
Attendance rate	94%	95%	95%
Graduation rate (2008)	0%	70%	75%
Poverty rate	18%	15%	19%
Student/teacher ratio	15.1	16.8	17.1
Average teacher salary	\$39,965	\$42,842	\$45,209
Average years' experience	12.0	10.1	8.3
Percent of teachers in first 3 years	24%	24%	16%

District's cost measures relative to peer group

Operational Area	Measure	District	Peer Average	State Average
Administration	Cost per pupil	\$912	\$1,148	\$729
	Students per administrator	60	51	66
Plant Operations	Cost per square foot	\$5.82	\$5.49	\$6.40
	Square footage per student	148	253	144
Food Service	Cost per meal equivalent	\$2.96	\$3.07	\$2.53
Transportation	Cost per mile	\$2.36	\$2.53	\$3.36
	Miles per rider	117	359	271

Very Low Low Comparable High Very High

Per-pupil spending by function

	District		Peer	State	National
	2008	2009	2009	2009	2007
Total	\$8,133	\$7,697	\$9,562	\$7,908	\$9,683
Classroom dollars	\$4,913	\$4,640	\$4,925	\$4,497	\$5,903
Nonclassroom dollars:	\$3,220	\$3,057	\$4,637	\$3,411	\$3,780
Administration	979	912	1,148	729	1,050
Plant Operations	884	864	1,379	920	951
Food Service	504	485	444	382	369
Transportation	208	216	554	343	406
Student Support	299	295	749	594	512
Instruction Support	346	285	356	431	470
Other	0	0	7	12	22

Proposition 301

Teacher pay

On average, each teacher, librarian, and counselor earned between \$7,751 and \$7,800 in additional salary.

Performance pay plan goals and results

Type of goal	Goal met?
Student achievement	■
Dropout/ graduation rates	
Student attendance	
Parent/student satisfaction	
Teacher attendance	
Teacher professional development	
Teacher evaluations	■
Tutoring	
Other	

■ = yes, □ = no, and ▴ = partially