

Classroom Dollars and Proposition 301 Results

Pima Unified School District

Graham County

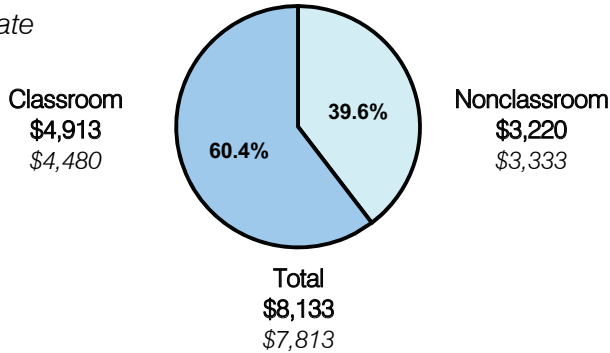
District size: Medium
 Students attending: 699
 Number of schools: 3
 Number of certified teachers: 46

Classroom Dollars

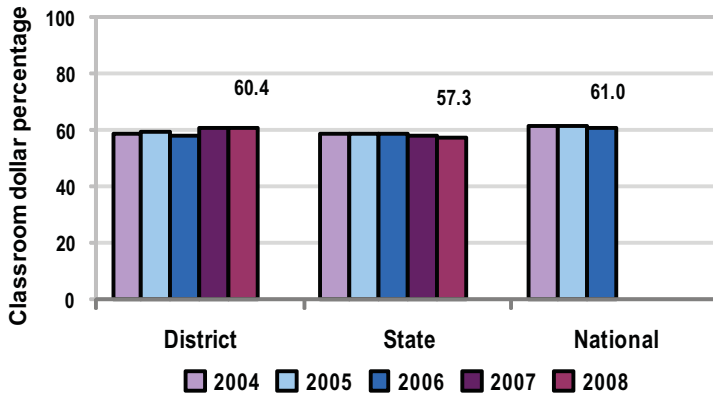
Fiscal year 2008 averages per pupil

District

State



5-year comparison



Expenditures by function

	Percentage					State 2008	National 2006
	2004	2005	2006	2007	2008		
Classroom dollars	58.7	59.6	57.6	60.9	60.4	57.3	61.0
Nonclassroom dollars:							
Administration	13.8	14.1	14.7	12.7	12.0	9.2	10.8
Plant operations	12.6	12.4	13.0	10.7	10.9	11.3	9.9
Food service	6.1	6.1	6.4	5.7	6.1	4.8	3.8
Transportation	3.4	3.3	3.8	2.9	2.6	4.4	4.2
Student support	3.2	2.5	2.5	4.0	3.7	7.4	5.2
Instruction support	2.2	1.9	2.0	3.1	4.3	5.4	4.9
Other		0.1				0.2	0.2

Comparative Information

	District			State 2008
	2006	2007	2008	
Student/teacher ratio	16.4	15.0	15.0	17.3
Average teacher salary	\$32,187	\$39,669	\$38,795	\$44,967
Average years' experience	8.9	9.4	10.5	8.1

Classroom dollar ranking: 35 of 230 districts.

Proposition 301

District-reported 2008 results

Teacher pay

- On average, each teacher, librarian, and counselor earned between \$6,049 and \$6,242 in additional salary.

Performance

- The District accomplished 1 of 2 goals, which were based on district and individual performance.
- The goal not met required students to improve their reading, writing, and math AIMS scores. Scores improved in only 1 of the 3 areas.
- Teachers received acceptable performance evaluations, which included ratings for planning, creating, and using instructional objectives aligned with state standards.

Menu

- Teachers were compensated for AIMS intervention activities.
- Teachers were also compensated for completing evaluations, professional-growth plans, and 30 seat hours of professional development activities, including Structured English Immersion coursework.