

Classroom Dollars and Proposition 301 Results

Pima Unified School District

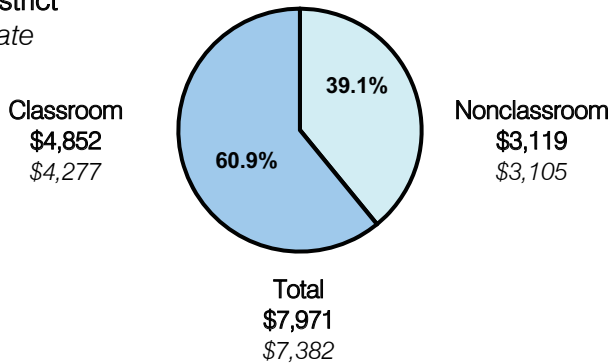
Graham County

District size: Medium
 Students attending: 638
 Number of schools: 3
 Number of certified teachers: 42

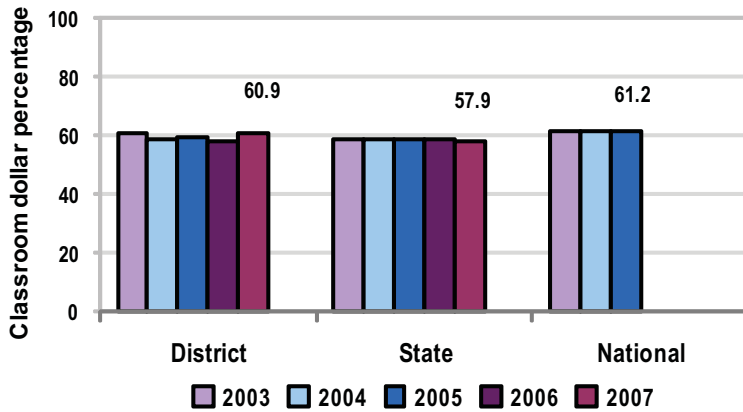
Classroom Dollars

Fiscal year 2007 averages per pupil

District
 State



5-year comparison



Expenditures by function

	Percentage					State 2007	National 2005
	District						
	2003	2004	2005	2006	2007		
Classroom dollars	61.0	58.7	59.6	57.6	60.9	57.9	61.2
Nonclassroom dollars:							
Administration	12.6	13.8	14.1	14.7	12.7	9.5	11.0
Plant operations	11.8	12.6	12.4	13.0	10.7	11.3	9.6
Food service	6.2	6.1	6.1	6.4	5.7	4.7	3.9
Transportation	2.9	3.4	3.3	3.8	2.9	4.3	4.1
Student support	3.1	3.2	2.5	2.5	4.0	7.3	5.2
Instruction support	2.4	2.2	1.9	2.0	3.1	4.8	4.8
Other			0.1			0.2	0.2

Comparative Information

	District			State 2007
	2005	2006	2007	
Student/teacher ratio	16.7	16.4	15.0	17.4
Average teacher salary	\$34,349	\$32,187	\$39,669	\$43,833
Average years' experience	9.2	8.9	9.4	8.1

Classroom dollar ranking: 29 of 229 districts.

Proposition 301

District-reported 2007 results

Teacher pay

- On average, each teacher, librarian, and counselor earned an additional \$5,500 in salary.

Performance

- The District accomplished its goals, which were based on district performance.
- Student achievement was measured by a district assessment of state academic standards.
- The District's schools met Adequate Yearly Progress objectives.
- Teachers completed at least 30 hours or 3 credits of professional development activities, including 15 hours of SEI coursework.
- Teachers received acceptable performance evaluations, which included ratings for planning, creating, and using instructional objectives aligned with state standards and using research-based instructional strategies.

Menu

- Teachers were compensated for AIMS intervention activities.
- Teachers were also compensated for completing evaluations, professional-growth plans, and professional development activities.