

Classroom Dollars and Proposition 301 Results

Pima Unified School District

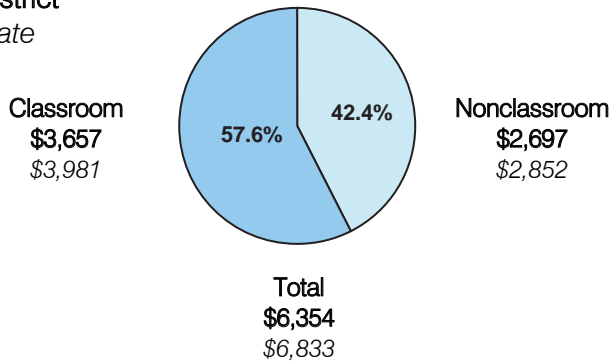
Graham County

District size: Medium
 Students attending: 652
 Number of schools: 3
 Number of certified teachers: 40

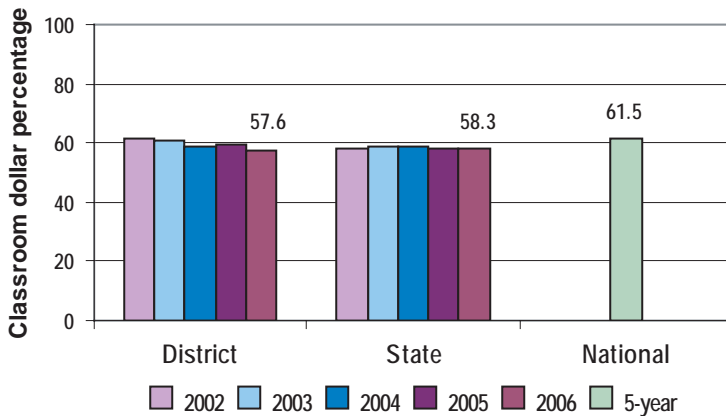
Classroom Dollars

Fiscal year 2006 averages per pupil

District
 State



5-year comparison



Expenditures by function

	District					State 2006	National 5-year
	2002	2003	2004	2005	2006		
Classroom dollars	61.5	61.0	58.7	59.6	57.6	58.3	61.5
Nonclassroom dollars:							
Administration	12.4	12.6	13.8	14.1	14.7	9.4	11.0
Plant operations	12.0	11.8	12.6	12.4	13.0	11.2	9.6
Food service	6.1	6.2	6.1	6.1	6.4	4.7	3.9
Transportation	3.0	2.9	3.4	3.3	3.8	4.2	4.0
Student support	2.7	3.1	3.2	2.5	2.5	7.2	5.1
Instruction support	1.7	2.4	2.2	1.9	2.0	4.8	4.7
Other	0.6			0.1		0.2	0.2

Comparative Information

	District			State 2006
	2004	2005	2006	
Student/teacher ratio	16.0	16.7	16.4	17.7
Average teacher salary	\$33,641	\$34,349	\$32,187	\$42,967
Average years' experience	8.4	9.2	8.9	8.3

Classroom dollar ranking: 77 of 229 districts.

Proposition 301

District-reported 2006 results

Teacher pay

- On average, each teacher, librarian, and counselor earned an additional \$5,787 in salary.

Performance

- The District accomplished its goals, which were based on district performance.
- Student achievement was measured by a district assessment of state academic standards.
- Teachers completed 15 hours of SEI coursework.
- Teachers received acceptable performance evaluations, which included ratings for planning, creating, and using instructional objectives aligned with state standards; using research-based instructional strategies for maximum student engagement in learning; and creating and maintaining a safe, orderly, and equitable classroom environment that maximizes student learning.

Menu

- Teachers received additional base pay increases.
- Teachers were compensated for completing evaluations, professional-growth plans, and 15 hours of professional development activities.