

Classroom Dollars and Proposition 301 Results

Pinal County Special Education Program

Pinal County

District size: Very Small
 Students attending: 20
 Number of schools: n/a
 Number of certified teachers: n/a

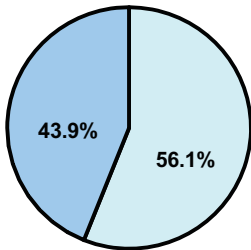
Classroom Dollars

Fiscal year 2008 averages per pupil

District

State

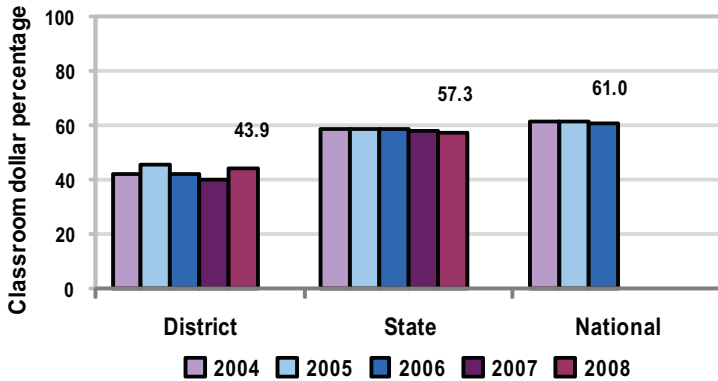
Classroom
 \$29,308
 \$4,480



Nonclassroom
 \$37,502
 \$3,333

Total
 \$66,810
 \$7,813

5-year comparison



Expenditures by function

	District					State 2008	National 2006
	2004	2005	2006	2007	2008		
Classroom dollars	42.0	45.2	41.8	40.3	43.9	57.3	61.0
Nonclassroom dollars:							
Administration	9.0	9.0	9.0	9.6	5.1	9.2	10.8
Plant operations	5.9	7.5	9.6	10.7	9.4	11.3	9.9
Food service	0.2				1.4	4.8	3.8
Transportation	13.4	13.8	14.1	15.6	16.1	4.4	4.2
Student support	28.4	24.2	25.3	23.1	22.5	7.4	5.2
Instruction support	1.1	0.2	0.2	0.7	1.6	5.4	4.9
Other		0.1				0.2	0.2

Comparative Information

	District			State 2008
	2006	2007	2008	
Student/teacher ratio	n/a	n/a	n/a	17.3
Average teacher salary	\$48,264	\$47,134	\$56,907	\$44,967
Average years' experience	n/a	n/a	n/a	8.1

Classroom dollar ranking: 204 of 230 districts.

Proposition 301

District-reported 2008 results

Teacher pay

- On average, each teacher earned an additional \$4,298 in salary, which includes performance pay for fiscal year 2007 performance.

Performance

- The District accomplished its goals, which were the same as the prior fiscal year's goals and were based on school performance.
- At least 75 percent of students met Individual Education Plan objectives in the areas of language and comprehensive health.

Menu

- Monies were used solely to increase teacher compensation.