

Pine Strawberry Elementary School District

Gila County
Operational peer group: L
Legislative districts: 5

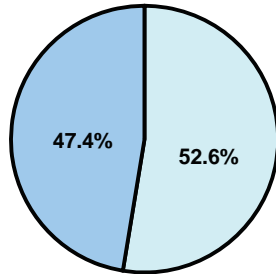
District size: Very Small
Students attending: 125
Number of schools: 1

OPERATIONAL EFFICIENCY

Average per-pupil spending

District
State

Classroom
\$9,646
\$4,497



Nonclassroom
\$10,684
\$3,411

Total
\$20,330
\$7,908

5-year trend

Total spending per pupil more than doubled, which is partially explained by the 22 percent decline in student enrollment. Spending in the classroom was very inconsistent year to year and decreased significantly overall from 52.6 to 47.4 percent. Spending on administration and plant operations increased significantly, while spending in other nonclassroom areas varied year to year.

District's cost measures relative to peer group

Operational Area	Measure	District	Peer Average	State Average
Administration	Cost per pupil	\$3,235	\$2,656	\$729
	Students per administrator	25	32	66
Plant Operations	Cost per square foot	\$6.18	\$7.53	\$6.40
	Square footage per student	533	318	144
Food Service	Cost per meal equivalent	\$4.20	\$5.10	\$2.53
Transportation	Cost per mile	\$3.22	\$1.79	\$3.36
	Miles per rider	299	710	271

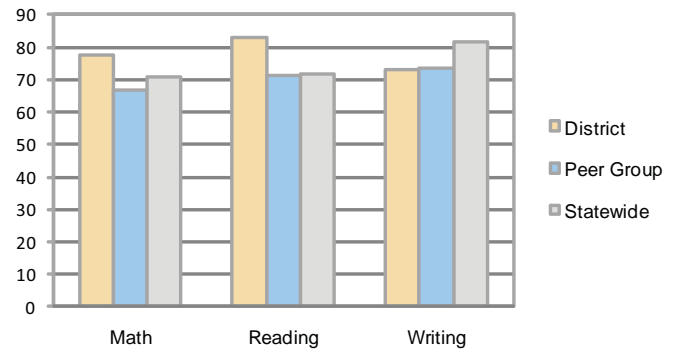
Very Low Low Comparable High Very High

Per-pupil spending by function

	District		Peer	State	National
	2008	2009	2009	2009	2007
Total	\$16,967	\$20,330	\$16,311	\$7,908	\$9,683
Classroom dollars	\$8,596	\$9,646	\$8,757	\$4,497	\$5,903
Nonclassroom dollars:	\$8,371	\$10,684	\$7,554	\$3,411	\$3,780
Administration	2,644	3,235	2,656	729	1,050
Plant Operations	2,060	3,290	2,297	920	951
Food Service	734	780	859	382	369
Transportation	1,247	1,438	930	343	406
Student Support	902	969	474	594	512
Instruction Support	784	972	338	431	470
Other	0	0	0	12	22

STUDENT ACHIEVEMENT AND TEACHER INFORMATION

Percentage of students meeting state standards (AIMS)



Adequate Yearly Progress (AYP) toward federal goals

The District's school met all applicable AYP objectives for NCLB.

Student and teacher information

Measure	District	Peer average	State average
Attendance rate	93%	94%	95%
Graduation rate (2008)	N/A	54%	75%
Poverty rate	28%	31%	19%
Student/teacher ratio	8.0	10.8	17.1
Average teacher salary	\$43,881	\$45,165	\$45,209
Average years' experience	7.7	12.7	8.3
Percent of teachers in first 3 years	32%	15%	16%

Proposition 301

Teacher pay

On average, each teacher earned \$2,086 in additional salary, and the audiologist earned an additional \$1,669.

Performance pay plan goals and results

Type of goal	Goal met?
Student achievement	■
Dropout/ graduation rates	■
Student attendance	■
Parent/student satisfaction	■
Teacher attendance	■
Teacher professional development	■
Teacher evaluations	■
Tutoring	■
Other	■

■ = yes, □ = no, and ▮ = partially