

Classroom Dollars and Proposition 301 Results

Pine Strawberry Elementary School District

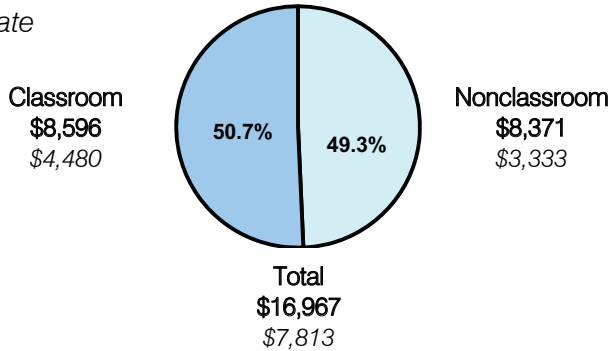
Gila County

District size: Very Small
 Students attending: 121
 Number of schools: 1
 Number of certified teachers: 15

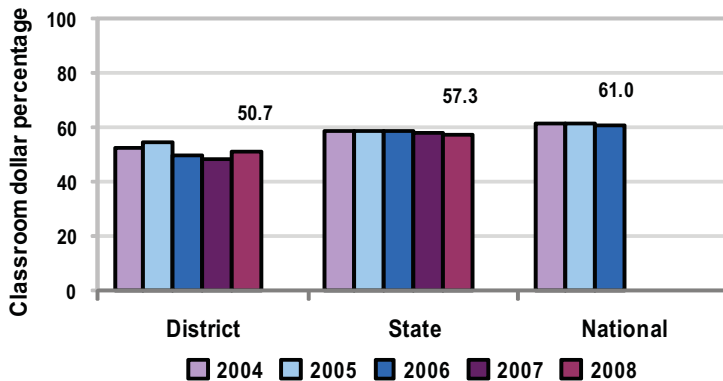
Classroom Dollars

Fiscal year 2008 averages per pupil

District
 State



5-year comparison



Expenditures by function

	District					State 2008	National 2006
	2004	2005	2006	2007	2008		
Classroom dollars	52.6	54.8	49.7	48.5	50.7	57.3	61.0
Nonclassroom dollars:							
Administration	13.4	13.7	15.8	17.1	15.6	9.2	10.8
Plant operations	11.9	12.3	15.2	13.0	12.1	11.3	9.9
Food service	4.1	4.5	5.0	4.2	4.4	4.8	3.8
Transportation	6.8	7.1	7.8	7.7	7.3	4.4	4.2
Student support	3.6	3.1	3.8	5.6	5.3	7.4	5.2
Instruction support	7.6	4.5	2.7	3.9	4.6	5.4	4.9
Other						0.2	0.2

Comparative Information

	District			State 2008
	2006	2007	2008	
Student/teacher ratio	10.3	8.1	8.1	17.3
Average teacher salary	\$38,159	\$41,955	\$43,073	\$44,967
Average years' experience	7.2	7.8	7.4	8.1

Classroom dollar ranking: 172 of 230 districts.

Proposition 301

District-reported 2008 results

Teacher pay

- On average, each teacher earned an additional \$3,980 in salary, and the speech pathologist earned an additional \$3,184.

Performance

- The District accomplished its goals, which were based on school performance.
- At least 70 percent of the students achieved positive academic growth from 2007 to 2008 on standardized tests.
- Teachers participated in 10 or more professional development hours.
- The student attendance rate was at least 90 percent.
- Based on survey results, 93 percent of parents and students were satisfied with the District.

Menu

- Monies were used solely to increase eligible employee compensation.