

Classroom Dollars and Proposition 301 Results

Pine Strawberry Elementary School District

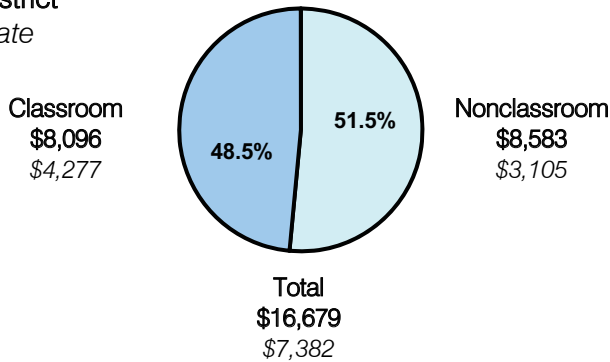
Gila County

District size: Very Small
 Students attending: 99
 Number of schools: 1
 Number of certified teachers: 12

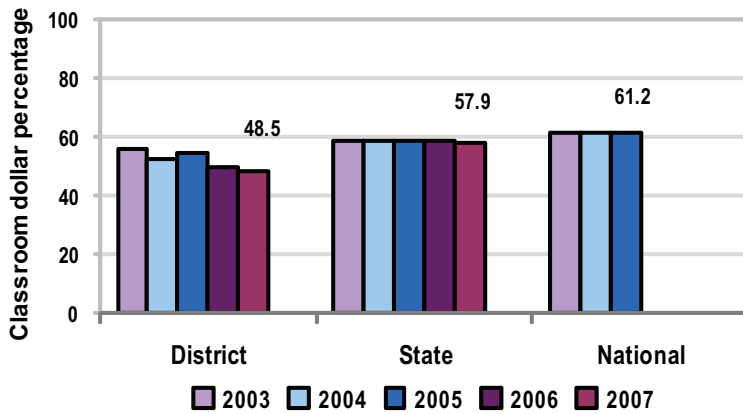
Classroom Dollars

Fiscal year 2007 averages per pupil

District
 State



5-year comparison



Expenditures by function

	District Percentage					State 2007	National 2005
	2003	2004	2005	2006	2007		
Classroom dollars	55.7	52.6	54.8	49.7	48.5	57.9	61.2
Nonclassroom dollars:							
Administration	12.0	13.4	13.7	15.8	17.1	9.5	11.0
Plant operations	12.2	11.9	12.3	15.2	13.0	11.3	9.6
Food service	4.9	4.1	4.5	5.0	4.2	4.7	3.9
Transportation	7.1	6.8	7.1	7.8	7.7	4.3	4.1
Student support	3.0	3.6	3.1	3.8	5.6	7.3	5.2
Instruction support	5.1	7.6	4.5	2.7	3.9	4.8	4.8
Other						0.2	0.2

Comparative Information

	District			State 2007
	2005	2006	2007	
Student/teacher ratio	10.5	10.3	8.1	17.4
Average teacher salary	\$43,084	\$38,159	\$41,955	\$43,833
Average years' experience	7.5	7.2	7.8	8.1

Classroom dollar ranking: 184 of 229 districts.

Proposition 301

District-reported 2007 results

Teacher pay

- On average, each teacher earned an additional \$3,325 in salary, and the speech pathologist earned an additional \$2,494.

Performance

- The District accomplished its goals, which were based on school performance.
- Goals were linked to at least 70 percent of the students achieving positive academic growth from 2006 to 2007 on standardized tests.
- The student attendance rate was greater than 94 percent.
- Based on survey results, 87 percent of parents and 93 percent of students were satisfied with the District.
- Each certified staff member participated in more than 10 professional development hours.

Menu

- Monies were used solely to increase eligible employee compensation.