

Pine Strawberry Elementary School District

Gila County

Efficiency peer groups 11 and T-11, Achievement peer group 18

Legislative district(s): 6

District size, location:

Very small, Rural

Students attending:

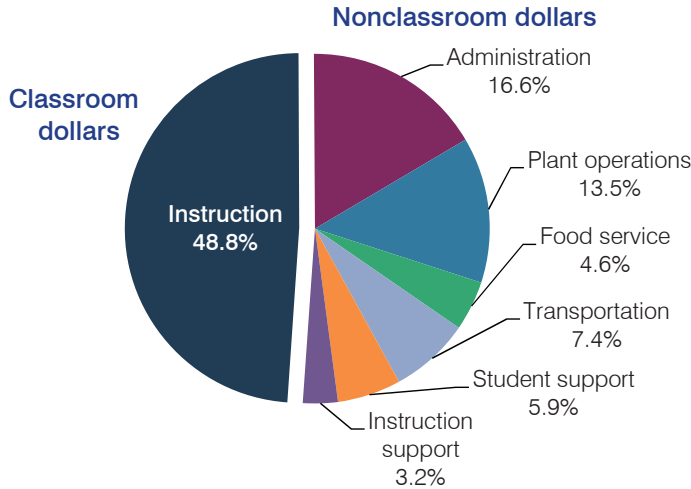
110

Number of schools:

1

OPERATIONAL EFFICIENCY

Spending by operational area



5-year spending trend (2009 through 2014)

Total spending per pupil increased by 10 percent. Spending in the classroom varied year to year, increasing overall from 47.4 to 48.8 percent. Spending on some nonclassroom areas also varied year to year, as is common for very small districts. Overall, spending on plant operations decreased substantially and spending on instruction support decreased.

Cost measures relative to peer averages

Operational area	Measure	District	Peer average	State average
Administration	Cost per pupil	\$3,715	\$2,835	\$757
	Students per administrator	22	28	68
Plant operations	Cost per square foot	\$4.93	\$6.51	\$6.04
	Square footage per student	609	351	153
Food service	Cost per meal equivalent	\$7.37	\$5.02	\$2.69
Transportation	Cost per mile	\$2.84	\$1.61	\$3.62
	Cost per rider	\$2,413	\$1,444	\$1,036

Per pupil spending by operational area

	District		Peer average	State average	National average
	2013	2014	2014	2014	2012
Total	\$23,005	\$22,319	\$16,101	\$7,578	\$10,667
Classroom dollars	11,431	10,890	8,231	4,073	6,495
Nonclassroom dollars:	11,574	11,429	7,870	3,505	4,172
Administration	3,474	3,715	2,835	757	1,160
Plant operations	2,959	3,002	2,137	923	1,008
Food service	1,076	1,028	901	405	429
Transportation	1,921	1,652	1,072	373	464
Student support	1,276	1,322	536	600	594
Instruction support	868	710	389	447	517

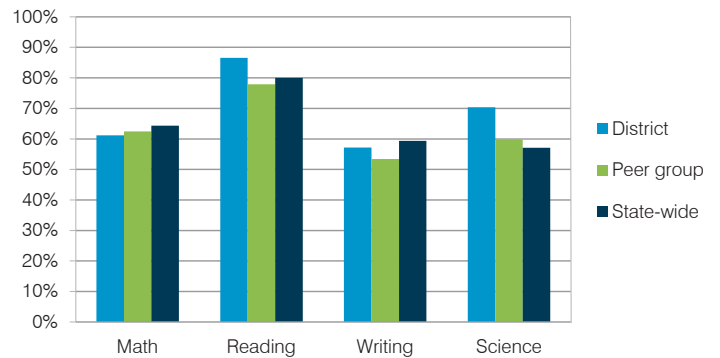
STUDENT ACHIEVEMENT, TEACHER MEASURES, AND FINANCIAL ASSESSMENT

ADE-reported district and school letter grades

District grade: **B**

Grade	Number of schools	Percentage of schools
A	0	0%
B	1	100%
C	0	0%
D	0	0%
F	0	0%
Not rated	0	0%

Students who met state standards (AIMS)



Student and teacher measures

Measure	District	Peer average	State average
Attendance rate	96%	95%	95%
Graduation rate (2013)	N/A	N/A	N/A
Poverty rate (2013)	25%	25%	24%
Students per teacher	6.8	13.1	18.6
Average teacher salary	\$41,783	\$45,915	\$46,026
Amount from Proposition 301	\$2,534	\$3,467	\$4,810
Average years of teacher experience	8.3	12.1	10.9
Percentage of teachers in first 3 years	13%	13%	20%

Financial stress assessment

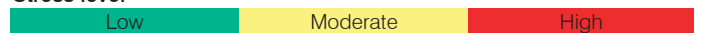
Overall financial stress level: **Low**

Measure: 2012 through 2014

Assessment

Change in number of district students	Small school adjustment
Spending exceeded operating/capital budgets	No overspending
Spending increase election results	No election held
Operating reserve percentage (max. 4%), trend	4.0%, Steady
Years of capital reserve held	More than 3 years
Current financial and internal control status	Compliant

Stress level



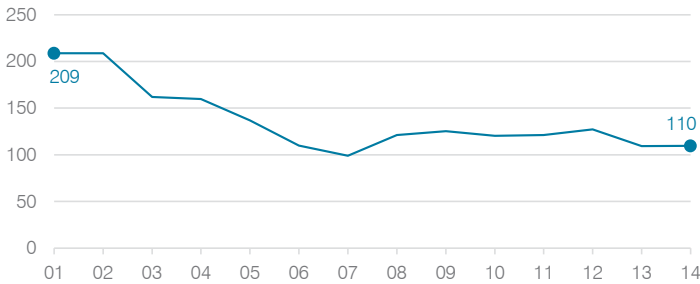
Pine Strawberry Elementary School District

	2001	2002	2003	2004	2005	2006	2007	2008	2009	2010	2011	2012	2013	2014
Classroom dollar percentage:	51.5	55.2	55.7	52.6	54.8	49.7	48.5	50.7	47.4	49.6	49.2	51.9	49.7	48.8

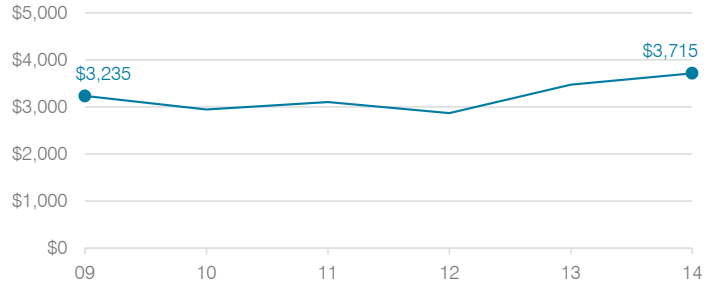
OPERATIONAL TRENDS

Fiscal years as indicated

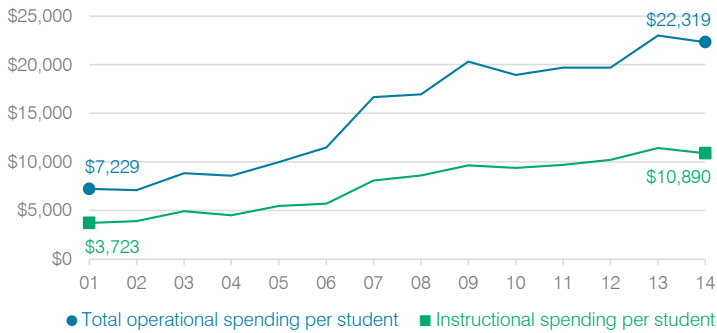
Students attending



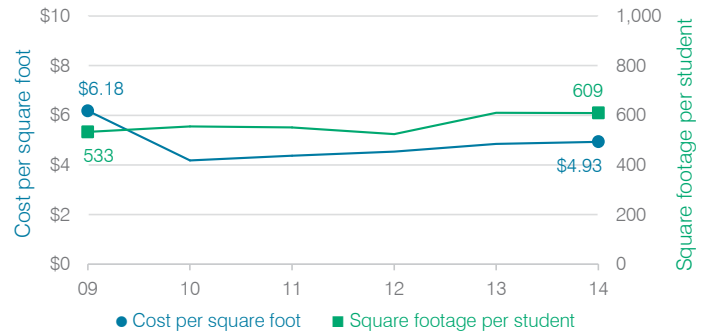
Administrative cost per student



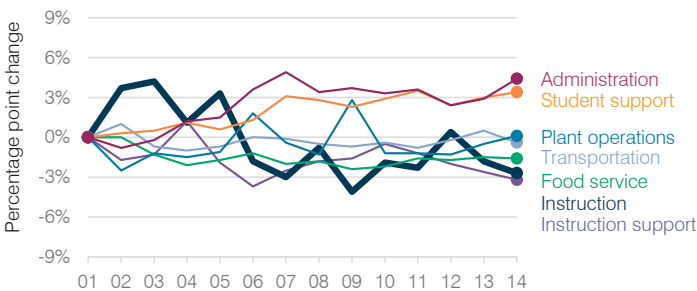
Total operational and instructional spending per student



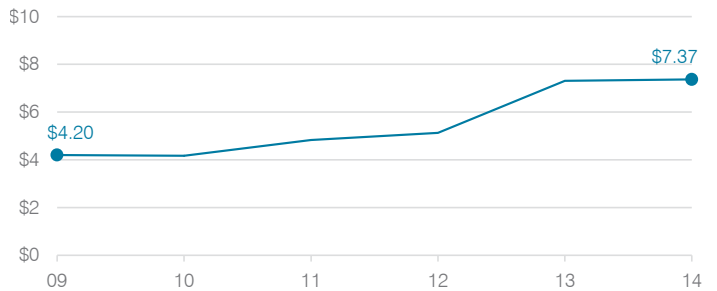
Plant cost per square foot and square footage per student



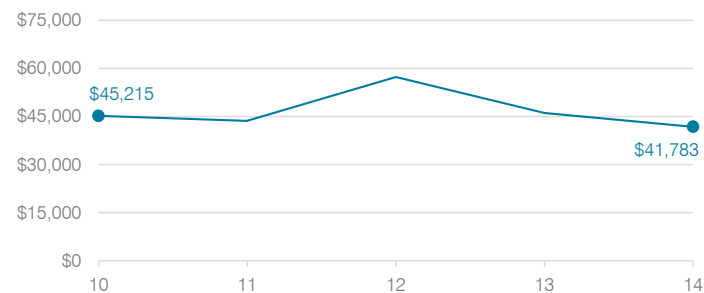
Changes in operational spending percentages



Food service cost per meal



Average teacher salary



Transportation costs per mile and per rider

