

Piñon Unified School District

Navajo County

Efficiency peer groups 5 and T-10, Achievement peer group 7¹

Legislative district(s): 7

District size, location:

Medium, Rural

Students attending:

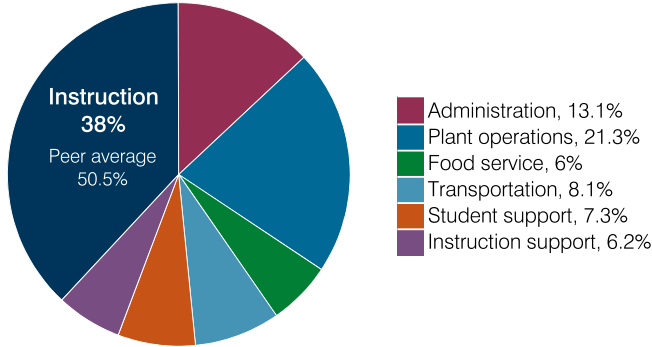
1,053

Number of schools:

3

OPERATIONAL EFFICIENCY

Spending by operational area



Efficiency measures relative to peer averages

Operational area	Measure	District	Peer average	State average
Administration	Cost per pupil	\$2,046	\$1,221	\$860
	Students per administrative position	34	54	66
Plant operations	Cost per square foot	\$8.84	\$5.43	\$6.34
	Square footage per student	376	257	156
Food service	Cost per meal	\$4.11	\$3.66	\$3.02
Transportation	Cost per mile	\$3.22	\$1.95	\$4.05
	Cost per rider	\$2,068	\$1,572	\$1,301

Very low
Low
Comparable
High
Very high

Per pupil spending

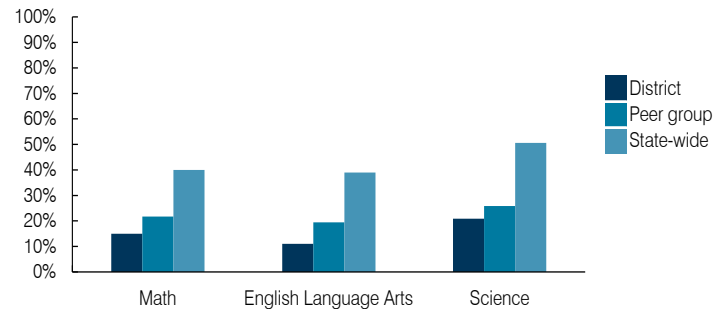
Spending by area	District		Peer average 2018	State average 2018
	2017	2018		
Instruction	\$ 6,360	\$ 5,942	\$ 4,824	\$ 4,480
Administration	1,987	2,046	1,221	860
Plant operations	3,393	3,327	1,365	988
Food service	803	932	437	425
Transportation	1,291	1,265	532	388
Student support	1,149	1,147	623	693
Instruction support	927	990	359	462
Total operational	15,910	15,649	9,361	8,296
Land and buildings	196	217	799	827
Equipment	1,175	1,154	433	409
Interest	68	120	248	228
Other	35	40	71	169
Total nonoperational	1,474	1,531	1,551	1,633
Total per pupil spending	\$ 17,384	\$ 17,180	\$ 10,912	\$ 9,929

STUDENT ACHIEVEMENT, STUDENT AND TEACHER MEASURES, AND REVENUES

ADE-assigned school letter grades

Grade	Number of schools	Percentage of schools
A	0	0%
B	0	0%
C	0	0%
D	3	100%
F	0	0%

Students who passed State assessments



Student and teacher measures

Measure	District	Peer average	State average
Attendance rate	91%	91%	94%
Graduation rate (2017)	78%	76%	78%
Poverty rate (2017)	39%	41%	19%
Special education population	11%	12%	12%
Students per teacher	15.0	15.8	18.4
Average teacher salary	\$48,270	\$48,537	\$48,951
Amount from Prop 301	\$4,300	\$5,191	\$6,411
Average years of teacher experience	9.8	12.5	11.4
Percentage of teachers in first 3 years	27%	18%	19%

Per pupil revenues

Revenues by source	District		Peer average 2018	State average 2018
	2017	2018		
Federal	\$ 9,215	\$ 10,989	\$ 3,917	\$ 1,317
State	6,701	6,781	4,283	4,011
Local	877	949	4,207	4,592
Total per pupil revenues	\$ 16,793	\$ 18,719	\$ 12,407	\$ 9,920

Select revenues from common sources

Equalization formula funding	\$ 6,399	\$ 6,405	\$ 5,992	\$ 5,585
Grants	2,615	2,456	1,703	1,241
Donations and tax credits	1	14	147	90

Select revenues from less common sources

			Number of peers receiving
Desegregation	\$ 0	\$ 0	0 of 31
Small school adjustment	0	0	0 of 31
Federal impact aid	6,664	8,646	16 of 31
Voter-approved levy increases	0	0	21 of 31

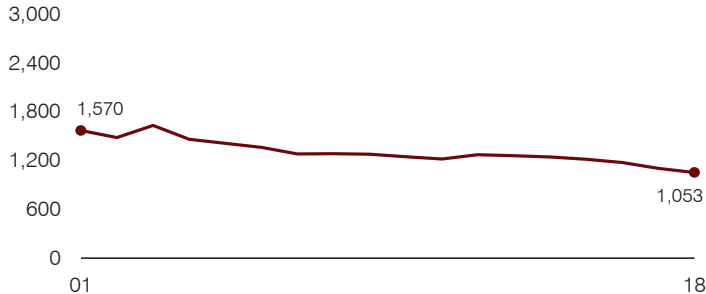
¹ See Appendix A for information such as districts included in each peer group and Appendix B for sources and methodology.

Instructional spending percentage

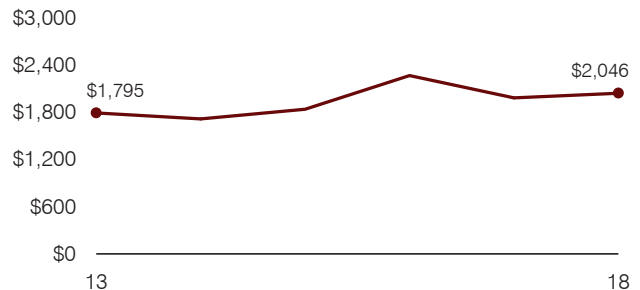
Year: 2001 2002 2003 2004 2005 2006 2007 2008 2009 2010 2011 2012 2013 2014 2015 2016 2017 2018
 Percentage: 44.9 51.5 52.0 49.8 45.8 42.0 40.7 42.1 37.7 35.0 36.5 38.9 37.7 41.2 42.4 39.2 40.0 38.0

TRENDS AND FINANCIAL STRESS ASSESSMENT
 Fiscal years as indicated

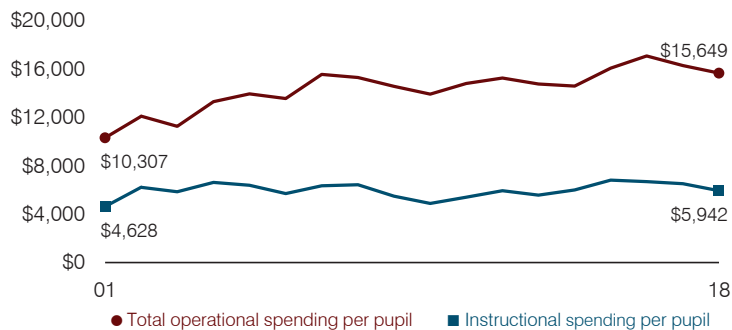
Students attending



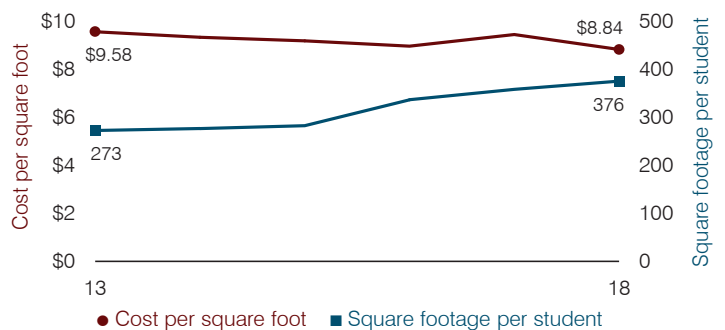
Administrative cost per pupil



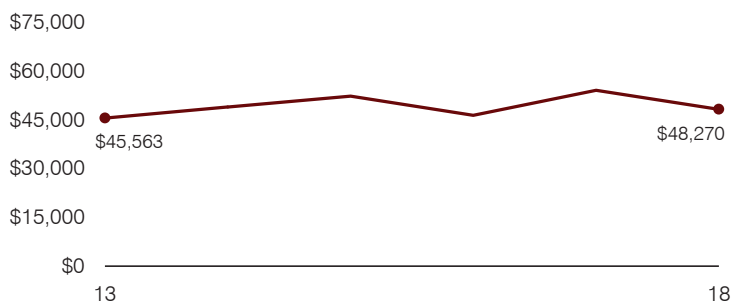
Total operational and instructional spending per pupil (inflation adjusted to 2018 dollars)



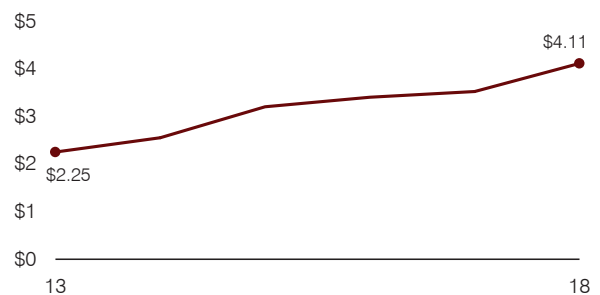
Plant cost per square foot and square footage per student



Average teacher salary



Food service cost per meal



Financial stress assessment

Overall financial stress level: **Low**

Measure: 2016 through 2018	Assessment
Change in number of district students	Large decrease
Spending exceeded operating/capital budgets	No overspending
Spending increase election results	No election held
Operating reserve percentage, Trend	4.5%, Varying
Years of capital reserve held	Impact Aid Fund reserve
Current financial and internal control status	Compliant

Low **Moderate** **High**

Transportation costs per mile and per rider

