

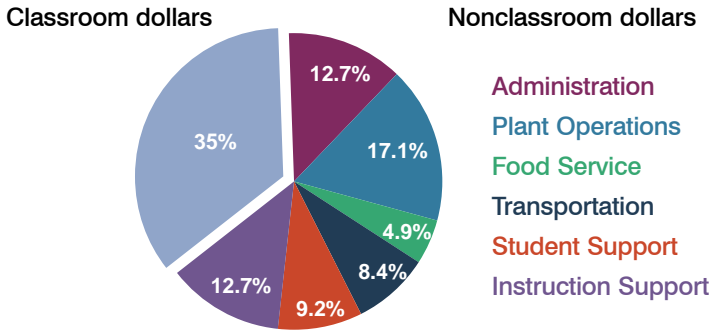
Pinon Unified School District

Navajo County
Peer groups: Efficiency 5, Achievement 21
Legislative district(s): 2

District size: Medium
Students attending: 1,248
Number of schools: 3

OPERATIONAL EFFICIENCY

Spending by function



5-year trend

Total spending per pupil increased by 13 percent. Spending in the classroom was very inconsistent year to year, decreasing significantly overall from 45.8 to 35 percent. Spending on administration increased and spending on student and instruction support increased significantly, while spending in other nonclassroom areas remained fairly stable.

District's cost measures relative to peer group

Operational Area	Measure	District	Peer Average	State Average
Administration	Cost per pupil	\$1,546	\$1,060	\$721
	Students per administrator	32	54	66
Plant Operations	Cost per square foot	\$7.53	\$5.34	\$6.25
	Square footage per student	276	243	146
Food Service	Cost per meal equivalent	\$2.82	\$2.83	\$2.41
Transportation	Cost per mile	\$3.16	\$2.55	\$3.35
	Miles per rider	501	360	282

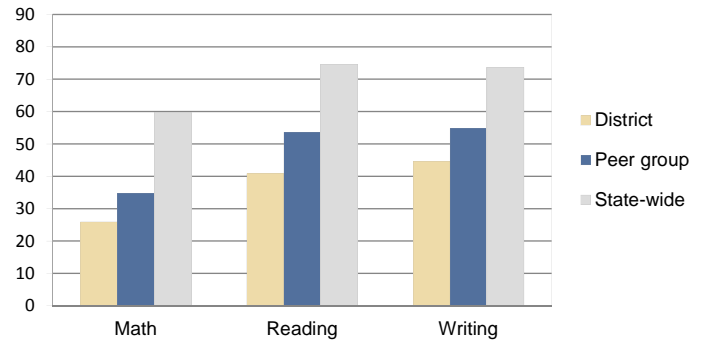
Very low Low Comparable High Very high

Per-pupil spending by function

	District		Peer 2010	State 2010	National 2008
	2009	2010			
Total	\$12,593	\$12,159	\$8,776	\$7,609	\$10,297
Classroom dollars	\$4,747	\$4,259	\$4,466	\$4,253	\$6,262
Nonclassroom dollars:	\$7,846	\$7,900	\$4,310	\$3,356	\$4,035
Administration	1,844	1,546	1,060	721	1,109
Plant Operations	2,162	2,077	1,260	914	1,003
Food Service	680	596	399	366	390
Transportation	961	1,019	510	342	438
Student Support	1,083	1,113	657	581	556
Instruction Support	1,116	1,549	424	432	539

STUDENT ACHIEVEMENT AND TEACHER INFORMATION

Percentage of students meeting state standards (AIMS)



Adequate Yearly Progress (AYP) toward federal goals

1 school met all applicable AYP objectives for NCLB. 2 schools failed to meet academic and attendance objectives.

Student and teacher information

Measure	District	Peer Average	State Average
Attendance rate	86%	91%	94%
Graduation rate (2009)	58%	63%	76%
Poverty rate (2009)	42%	42%	21%
Student/teacher ratio	16.0	14.7	17.9
Average teacher salary	\$41,543	\$42,282	\$47,077
Average years' experience	9.0	12.3	10.6
Percent of teachers in first 3 years	29%	15%	20%

Proposition 301

Teacher and other staff pay

On average, each teacher earned \$3,999 in additional pay, and each instructional aide and librarian earned between \$748 and \$3,204.

Performance pay plan goals and results

Type of goal	Goal met?
Student achievement	▀
Dropout/graduation rates	-
Student attendance	-
Parent/student satisfaction	■
Teacher attendance	-
Teacher professional development	-
Teacher evaluations	-
Tutoring	-
Other	-

■ = yes, □ = no, ▀ = partially, and - = no goal set