

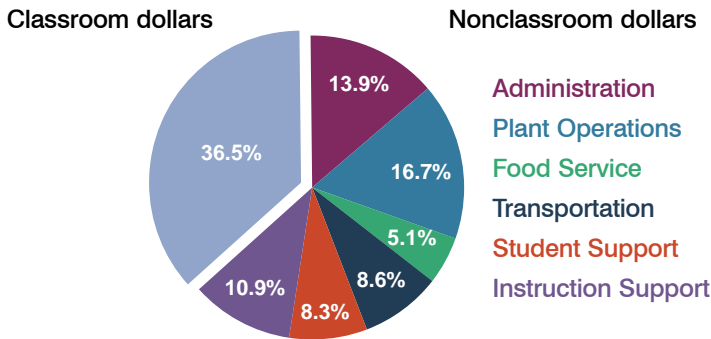
Pinon Unified School District

Navajo County
Peer groups: Efficiency Group 5, Achievement Group 8
Legislative district(s): 2

District size: Medium
Students attending: 1,220
Number of schools: 3

OPERATIONAL EFFICIENCY

Spending by operational area



5-year trend

Total spending per pupil increased by 21 percent. Spending in the classroom was very inconsistent year to year, decreasing significantly overall from 42 to 36.5 percent. Spending on administration and instruction support increased significantly, and spending on student support decreased. Spending on other nonclassroom areas remained fairly stable.

District's cost measures relative to peer group

Operational Area	Measure	District	Peer Average	State Average
Administration	Cost per pupil	\$1,837	\$1,104	\$728
	Students per administrator	28	56	66
Plant Operations	Cost per square foot	\$7.79	\$4.74	\$6.10
	Square footage per student	282	259	152
Food Service	Cost per meal equivalent	\$2.48	\$2.98	\$2.45
Transportation	Cost per mile	\$3.12	\$2.71	\$3.39
	Miles per rider	548	336	283

Very low Low Comparable High Very high

Per-pupil spending by operational area

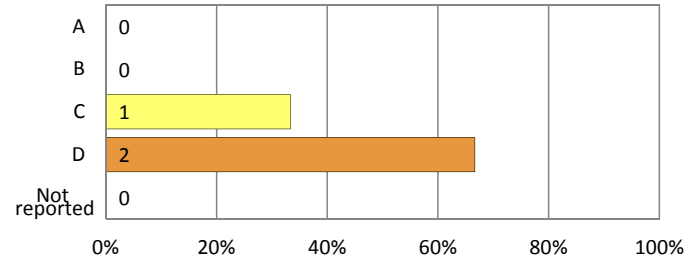
	District		Peer 2011	State 2011	National 2009
	2010	2011			
Total	\$12,159	\$13,184	\$8,531	\$7,485	\$10,591
Classroom dollars	\$4,259	\$4,819	\$4,298	\$4,098	\$6,456
Nonclassroom dollars:	\$7,900	\$8,365	\$4,233	\$3,387	\$4,135
Administration	1,546	1,837	1,104	728	1,147
Plant Operations	2,077	2,199	1,213	927	1,033
Food Service	596	654	421	375	404
Transportation	1,019	1,139	527	352	443
Student Support	1,113	1,096	651	571	573
Instruction Support	1,549	1,440	317	434	535

STUDENT ACHIEVEMENT AND TEACHER INFORMATION

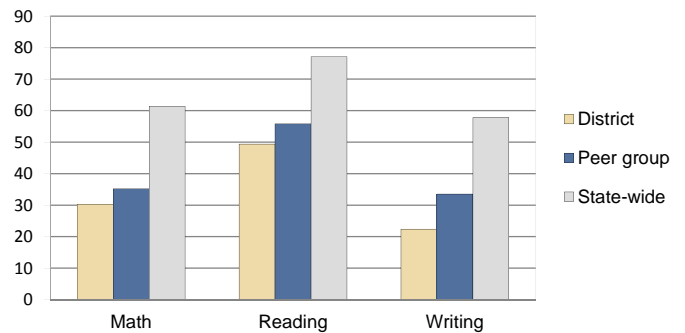
District and school letter grades

District grade: **D**

School grades (number and percentage):



Percentage of students meeting state standards (AIMS)



Student and teacher information

Measure	District	Peer Average	State Average
Attendance rate	92%	92%	95%
Graduation rate (2010)	55%	68%	78%
Poverty rate (2010)	49%	40%	22%
Students per teacher	15.1	15.5	18.1
Average teacher salary	\$43,360	\$42,449	\$45,637
Average years of experience	9.6	12.2	10.9
Percent of teachers in first 3 years	30%	16%	16%

Proposition 301 pay, goals, and results

Average additional salary earned by teachers: \$5,825

Type of goal	Goal met?
Student achievement	▀
Dropout/graduation rates	-
Student attendance	-
Parent/student satisfaction	▀
Teacher attendance	-
Teacher professional development	-
Teacher evaluations	-
Tutoring	-
Other	-

■ = yes, □ = no, ▀ = partially, and - = no goal set