

# Piñon Unified School District

Navajo County

Efficiency peer groups 5 and T-10, Achievement peer group 7

Legislative district(s): 7

District size, location:

Medium, Rural

Students attending:

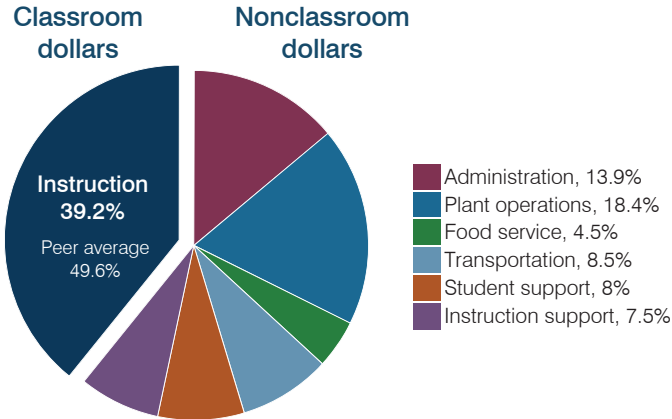
1,176

Number of schools:

3

## OPERATIONAL EFFICIENCY

### Spending by operational area



### Efficiency measures relative to peer averages

Operational area	Measure	District	Peer average	State average
Administration	Cost per pupil	\$2,271	\$1,145	\$806
	Students per administrative position	36	56	67
Plant operations	Cost per square foot	\$8.98	\$5.22	\$6.10
	Square footage per student	337	270	154
Food service	Cost per meal	\$3.40	\$3.40	\$2.81
Transportation	Cost per mile	\$4.04	\$1.89	\$3.72
	Cost per rider	\$2,484	\$1,242	\$1,092

Very low   Low   Comparable   High   Very high

### Per pupil spending

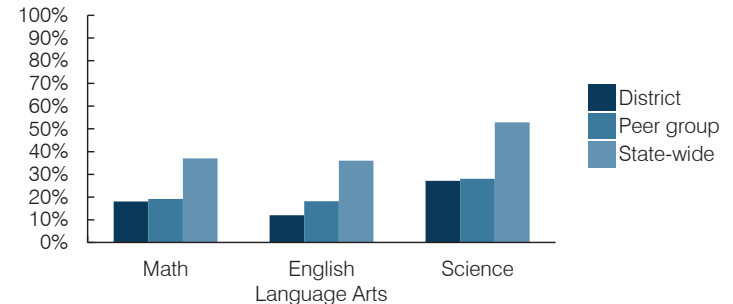
Spending by area	District		Peer average 2016	State average 2016
	2015	2016		
Instruction	\$ 6,495	\$ 6,422	\$ 4,576	\$ 4,145
Administration	1,842	2,271	1,145	806
Plant operations	2,601	3,022	1,342	939
Food service	658	734	450	415
Transportation	1,388	1,394	522	364
Student support	1,349	1,317	695	633
Instruction support	988	1,229	396	444
<b>Total operational</b>	<b>\$ 15,321</b>	<b>\$ 16,389</b>	<b>\$ 9,126</b>	<b>\$ 7,746</b>
Land and buildings	\$ 180	\$ 179	\$ 452	\$ 621
Equipment	576	1,330	498	400
Interest	69	69	243	216
Other	74	36	65	153
<b>Total nonoperational</b>	<b>\$ 899</b>	<b>\$ 1,614</b>	<b>\$ 1,258</b>	<b>\$ 1,390</b>
<b>Total per pupil spending</b>	<b>\$ 16,220</b>	<b>\$ 18,003</b>	<b>\$ 10,384</b>	<b>\$ 9,136</b>

## STUDENT AND TEACHER MEASURES, FINANCIAL ASSESSMENT, AND REVENUES

### Student and teacher measures

Measure	District	Peer average	State average
Attendance rate (2015)	92%	92%	94%
Graduation rate (2015)	76%	77%	78%
Poverty rate (2015)	40%	42%	23%
Students per teacher	11.5	15.6	18.6
Average teacher salary	\$46,420	\$45,126	\$46,384
Amount from Proposition 301	\$3,947	\$4,619	\$5,315
Average years of teacher experience	9.4	12.6	11.0
Percentage of teachers in first 3 years	21%	15%	20%

### Students who passed state assessments



### Financial stress assessment

Overall financial stress level: **Low**

Measure: 2014 through 2016

Assessment

Change in number of district students	Moderate decrease
Spending exceeded operating/capital budgets	No overspending
Spending increase election results	No election held
Operating reserve percentage, Trend	5.6%, Varying
Years of capital reserve held	Impact Aid Fund reserve
Current financial and internal control status	Compliant

Low   Moderate   High

### Per pupil revenues

Revenues by source	District		Peer average 2016	State average 2016
	2015	2016		
Federal	\$ 9,147	\$ 9,212	\$ 4,015	\$ 1,301
State	5,126	7,307	4,190	3,780
Local	912	1,911	4,081	4,268
<b>Total revenues per pupil</b>	<b>\$ 15,185</b>	<b>\$ 18,430</b>	<b>\$ 12,286</b>	<b>\$ 9,349</b>

### Select revenues from common sources

Equalization formula funding	\$ 5,817	\$ 6,121	\$ 5,922	\$ 5,471
Grants	2,431	2,481	1,805	1,182
Donations and tax credits	1	7	139	86

### Select revenues from less common sources

			Number of peers receiving
Desegregation	\$ 0	\$ 0	1 of 29
Small school adjustment	0	0	0 of 29
Federal impact aid	6,893	6,796	14 of 29
Voter-approved levy increases	0	0	19 of 29

**Classroom dollar percentage**

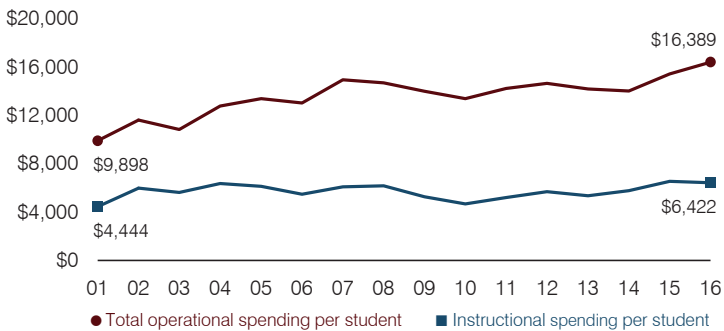
Year:	2001	2002	2003	2004	2005	2006	2007	2008	2009	2010	2011	2012	2013	2014	2015	2016
Percentage:	44.9	51.5	52.0	49.8	45.8	42.0	40.7	42.1	37.7	35.0	36.5	38.9	37.7	41.2	42.4	39.2

**OPERATIONAL TRENDS**  
Fiscal years as indicated

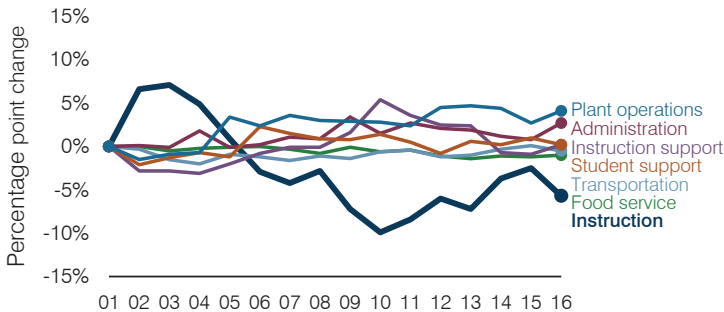
**5-year spending trend (2011 through 2016)**

Total operational spending per pupil, adjusted for inflation, increased by 15 percent. The percentage of dollars spent in the classroom varied year to year, increasing overall from 36.5 to 39.2 percent. Overall, as a percentage of total operational spending, instruction support decreased substantially and food service decreased slightly, while plant operations increased. Other nonclassroom areas varied year to year.

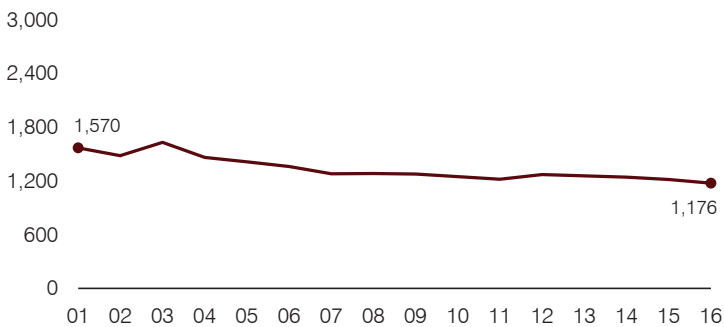
**Total operational and instructional spending per pupil (inflation adjusted to 2016 dollars)**



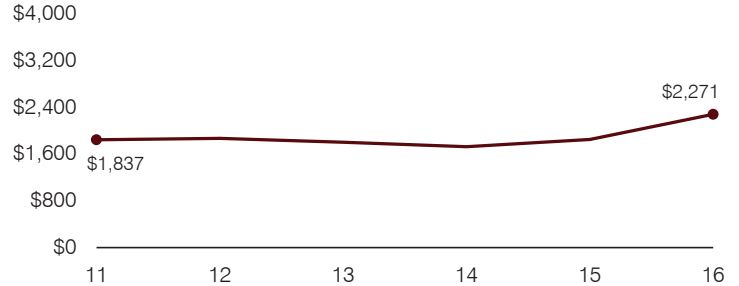
**Changes in operational spending percentages**



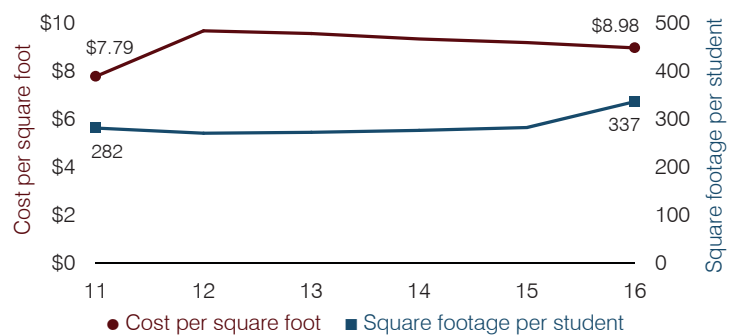
**Students attending**



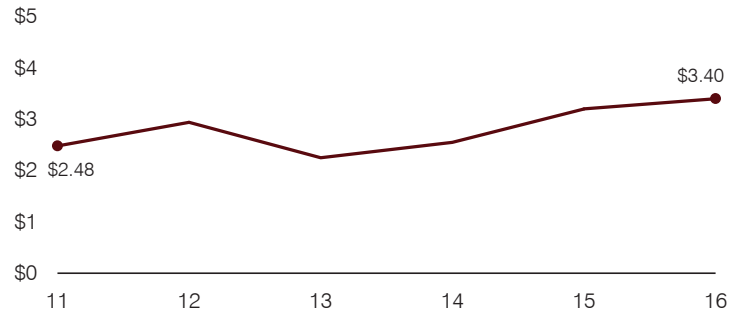
**Administrative cost per pupil**



**Plant cost per square foot and square footage per student**



**Food service cost per meal**



**Transportation costs per mile and per rider**

