

Classroom Dollars and Proposition 301 Results

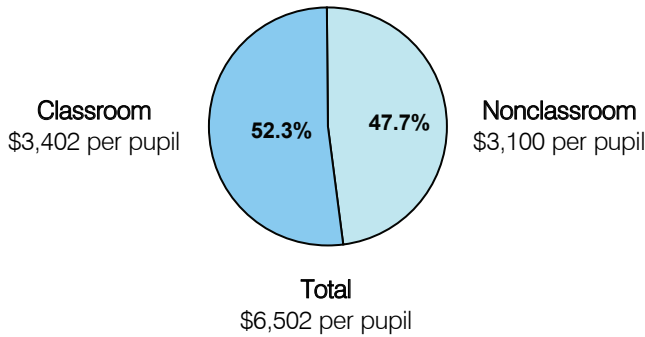
Pomerene Elementary School District

Cochise County

District size: Very Small
 Students attending: 106
 Number of schools: 1
 Number of certified teachers: 5

Classroom Dollars

Fiscal year 2005

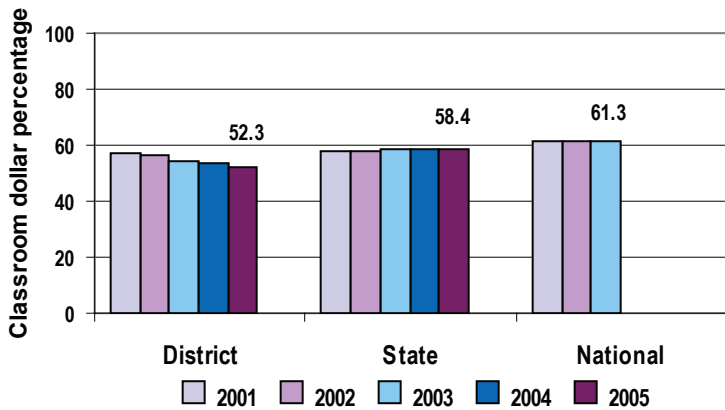


Comparative Information

| | District | | | State |
|---------------------------|----------|----------|----------|----------|
| | 2003 | 2004 | 2005 | 2005 |
| Student/teacher ratio | 17.2 | 16.2 | 22.4 | 18.3 |
| Average teacher salary | \$39,010 | \$35,791 | \$36,521 | \$39,095 |
| Average years' experience | 10.6 | 10.7 | 10.2 | 8.5 |

Classroom dollar ranking: 164 of 228 districts.

5-year comparison



Expenditures by function

| | District | | | | | State | National |
|-----------------------|----------|------|------|------|------|-------|----------|
| | 2001 | 2002 | 2003 | 2004 | 2005 | 2005 | 2002 |
| Classroom dollars | 56.9 | 56.7 | 54.6 | 53.3 | 52.3 | 58.4 | 61.5 |
| Nonclassroom dollars: | | | | | | | |
| Administration | 13.6 | 13.0 | 13.7 | 13.7 | 13.1 | 9.5 | 11.1 |
| Plant operations | 14.6 | 12.8 | 12.3 | 13.5 | 13.8 | 11.4 | 9.5 |
| Food service | | 2.9 | 10.3 | 10.9 | 10.2 | 4.8 | 4.0 |
| Transportation | 2.1 | 2.3 | 2.7 | 2.1 | 2.6 | 4.1 | 4.0 |
| Student support | 2.5 | 5.6 | 6.0 | 6.1 | 7.7 | 7.0 | 5.0 |
| Instruction support | | | 0.4 | 0.4 | 0.3 | 4.6 | 4.7 |
| Other | 10.3 | 6.7 | | | | 0.2 | 0.2 |

Proposition 301

District-reported 2005 results

Teacher pay

- On average, each teacher earned an additional \$2,532 in salary.

Performance

- The District accomplished its goals, which were similar to the prior fiscal year's goals and were based on district and individual performance.
- At least 50 percent of students showed 1 year's academic progress as measured by AIMS test scores.
- More than 60 percent of parents surveyed gave the District satisfactory ratings.

Menu

- Monies were used to compensate teachers for classroom preparation and curriculum development.