

# Pomerene Elementary School District

Cochise County

Efficiency peer groups 11 and T-13, Achievement peer group 17

Legislative district(s): 14

District size / location:

Very small, Rural

Students attending:

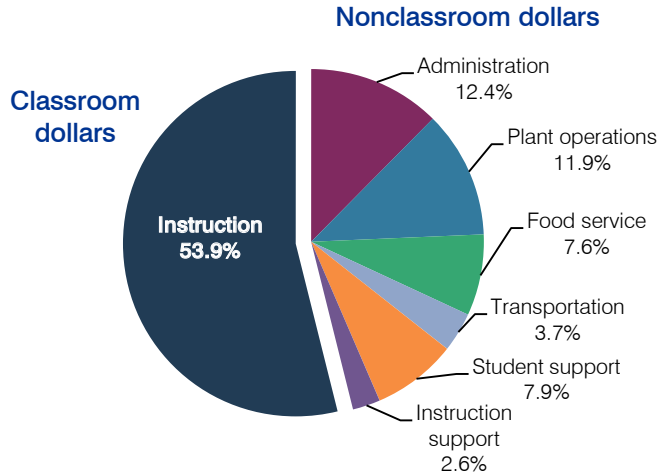
117

Number of schools:

1

## OPERATIONAL EFFICIENCY

### Spending by operational area



### 5-year spending trend

Total spending per pupil increased by 20 percent. Spending in the classroom varied year to year, and was 53.9 percent in both fiscal years 2007 and 2012. Spending on most nonclassroom areas also varied year to year, as is common for very small districts. Overall, spending on transportation increased slightly and spending on food service and student support decreased slightly.

### Cost measures relative to peer averages

Operational area	Measure	District	Peer average	State average
Administration	Cost per pupil	\$1,050	\$2,472	\$736
	Students per administrator	43	30	66
Plant operations	Cost per square foot	\$4.10	\$6.93	\$6.09
	Square footage per student	247	320	152
Food service	Cost per meal equivalent	\$3.84	\$4.88	\$2.47
Transportation	Cost per mile	\$3.75	\$1.53	\$3.50
	Cost per rider	\$974	\$1,171	\$982

### Per-pupil spending by operational area

	District		Peer average	State average	National average
	2011	2012	2012	2012	2010
<b>Total</b>	<b>\$9,848</b>	<b>\$8,500</b>	<b>\$15,082</b>	<b>\$7,475</b>	<b>\$10,652</b>
<b>Classroom dollars</b>	<b>6,198</b>	<b>4,580</b>	<b>7,880</b>	<b>4,053</b>	<b>6,526</b>
<b>Nonclassroom dollars:</b>	<b>3,650</b>	<b>3,920</b>	<b>7,202</b>	<b>3,422</b>	<b>4,126</b>
Administration	985	1,050	2,472	736	1,139
Plant operations	1,120	1,011	2,126	928	1,012
Food service	627	656	756	382	405
Transportation	171	316	970	362	443
Student support	561	668	541	578	592
Instruction support	186	219	337	436	535

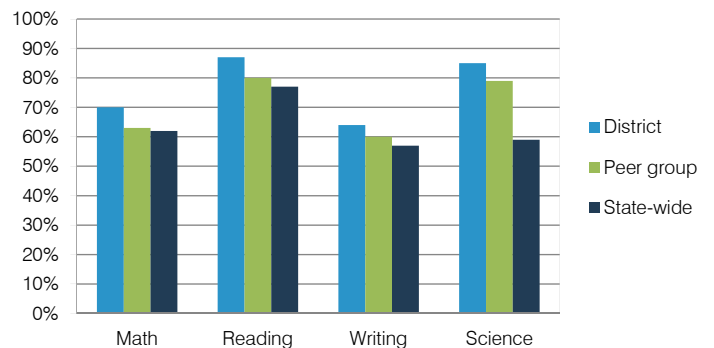
## STUDENT ACHIEVEMENT, TEACHER MEASURES, AND FINANCIAL ASSESSMENT

### ADE-reported district and school letter grades

District grade: **B**

Grade	Number of schools	Percentage of schools
A	0	0%
B	1	100%
C	0	0%
D	0	0%
F	0	0%
Not rated	0	0%

### Percentage of students who met state standards (AIMS)



### Student and teacher measures

Measure	District	Peer average	State average
Attendance rate	95%	95%	94%
Graduation rate (2011)	N/A	N/A	N/A
Poverty rate (2011)	16%	9%	25%
Students per teacher	16.7	9.6	18.1
Average teacher salary	\$44,534	\$42,030	\$45,193
Amount from Proposition 301	\$1,982	\$2,164	\$3,195
Average years of teacher experience	14.4	10.4	11.0
Percentage of teachers in first 3 years	0%	7%	16%

### Financial stress assessment

Overall financial stress level: **Low**

Measure: 2010 through 2012

Assessment

Number of students attending	Small school adjustment
Spending exceeded operating/capital budgets	No overspending
Spending increase election results	No election held
Operating reserve percentage (max. 4%), trend	4.0%, Steady
Years of capital reserve held	More than 3 years
Current financial and internal control status	Compliant

Stress level

