

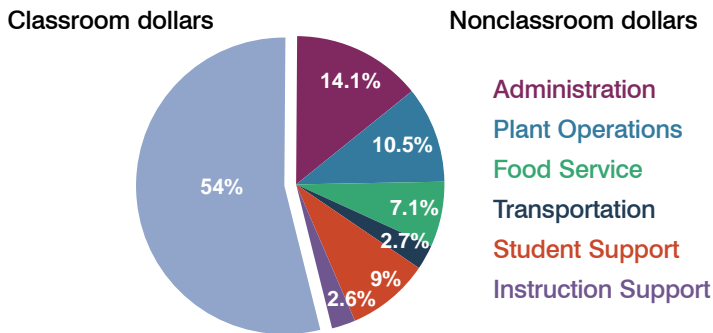
# Pomerene Elementary School District

Cochise County  
Peer groups: Efficiency 12, Achievement 2  
Legislative district(s): 25

District size: Very Small  
Students attending: 120  
Number of schools: 1

## OPERATIONAL EFFICIENCY

### Spending by function

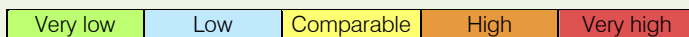


### 5-year trend

Total spending per pupil increased by 13 percent. Spending in the classroom was very inconsistent year to year, increasing overall from 52.3 to 54 percent. Spending on plant operations and food service decreased significantly, while spending on instruction support increased significantly. Spending in other nonclassroom areas varied year to year.

### District's cost measures relative to peer group

Operational Area	Measure	District	Peer Average	State Average
Administration	Cost per pupil	\$1,032	\$2,444	\$721
	Students per administrator	44	32	66
Plant Operations	Cost per square foot	\$3.20	\$7.59	\$6.25
	Square footage per student	241	297	146
Food Service	Cost per meal equivalent	\$3.13	\$4.85	\$2.41
Transportation	Cost per mile	\$4.14	\$1.87	\$3.35
	Miles per rider	97	611	282

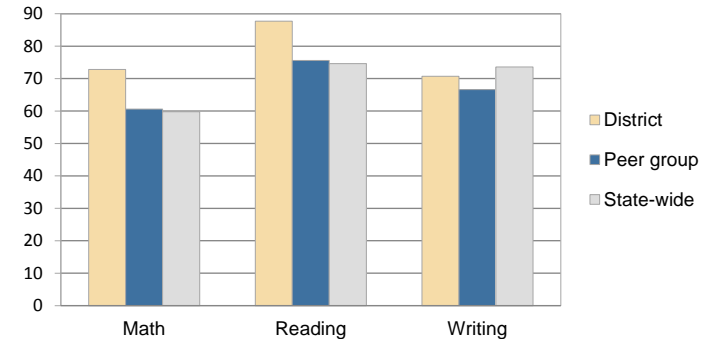


### Per-pupil spending by function

	District		Peer 2010	State 2010	National 2008
	2009	2010			
<b>Total</b>	<b>\$7,880</b>	<b>\$7,318</b>	<b>\$15,187</b>	<b>\$7,609</b>	<b>\$10,297</b>
<b>Classroom dollars</b>	<b>\$4,858</b>	<b>\$3,950</b>	<b>\$8,084</b>	<b>\$4,253</b>	<b>\$6,262</b>
<b>Nonclassroom dollars:</b>	<b>\$3,022</b>	<b>\$3,368</b>	<b>\$7,103</b>	<b>\$3,356</b>	<b>\$4,035</b>
Administration	794	1,032	2,444	721	1,109
Plant Operations	779	770	2,188	914	1,003
Food Service	533	521	751	366	390
Transportation	176	201	924	342	438
Student Support	583	656	473	581	556
Instruction Support	157	188	323	432	539

## STUDENT ACHIEVEMENT AND TEACHER INFORMATION

### Percentage of students meeting state standards (AIMS)



### Adequate Yearly Progress (AYP) toward federal goals

The District's school met all applicable AYP objectives for NCLB.

### Student and teacher information

Measure	District	Peer Average	State Average
Attendance rate	94%	94%	94%
Graduation rate (2009)	N/A	N/A	76%
Poverty rate (2009)	16%	15%	21%
Student/teacher ratio	16.0	13.8	17.9
Average teacher salary	\$39,868	\$44,598	\$47,077
Average years' experience	12.1	11.4	10.6
Percent of teachers in first 3 years	14%	13%	20%

### Proposition 301

#### Teacher and other staff pay

On average, each teacher earned \$4,057 in additional pay, and each instructional aide earned \$1,483.

#### Performance pay plan goals and results

Type of goal	Goal met?
Student achievement	▲
Dropout/graduation rates	-
Student attendance	▲
Parent/student satisfaction	■
Teacher attendance	-
Teacher professional development	■
Teacher evaluations	-
Tutoring	-
Other	-

■ = yes, □ = no, ▲ = partially, and - = no goal set