

Pomerene Elementary School District

Cochise County
Operational peer group: L
Legislative districts: 25

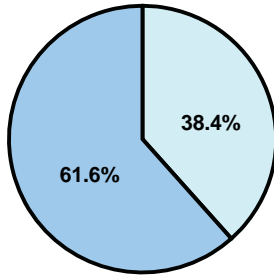
District size: Very Small
Students attending: 132
Number of schools: 1

OPERATIONAL EFFICIENCY

Average per-pupil spending

District
State

Classroom
\$4,858
\$4,497



Nonclassroom
\$3,022
\$3,411

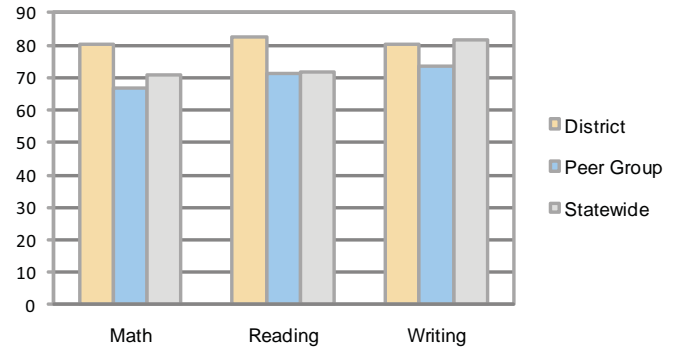
Total
\$7,880
\$7,908

5-year trend

Total spending per pupil increased by 16 percent. Spending in the classroom was very inconsistent year to year and increased significantly overall from 53.3 to 61.6 percent. Spending on administration, plant operations, and food service decreased significantly, while spending in other nonclassroom areas varied year to year.

STUDENT ACHIEVEMENT AND TEACHER INFORMATION

Percentage of students meeting state standards (AIMS)



Adequate Yearly Progress (AYP) toward federal goals

The District's school met all applicable AYP objectives for NCLB.

Student and teacher information

Measure	District	Peer average	State average
Attendance rate	96%	94%	95%
Graduation rate (2008)	N/A	54%	75%
Poverty rate	21%	31%	19%
Student/teacher ratio	15.5	10.8	17.1
Average teacher salary	\$42,730	\$45,165	\$45,209
Average years' experience	12.0	12.7	8.3
Percent of teachers in first 3 years	25%	15%	16%

District's cost measures relative to peer group

Operational Area	Measure	District	Peer Average	State Average
Administration	Cost per pupil	\$794	\$2,656	\$729
	Students per administrator	48	32	66
Plant Operations	Cost per square foot	\$3.55	\$7.53	\$6.40
	Square footage per student	219	318	144
Food Service	Cost per meal equivalent	\$3.16	\$5.10	\$2.53
Transportation	Cost per mile	\$3.29	\$1.79	\$3.36
	Miles per rider	114	710	271

Very Low Low Comparable High Very High

Per-pupil spending by function

	District		Peer	State	National
	2008	2009	2009	2009	2007
Total	\$7,788	\$7,880	\$16,311	\$7,908	\$9,683
Classroom dollars	\$4,380	\$4,858	\$8,757	\$4,497	\$5,903
Nonclassroom dollars:	\$3,408	\$3,022	\$7,554	\$3,411	\$3,780
Administration	946	794	2,656	729	1,050
Plant Operations	804	779	2,297	920	951
Food Service	574	533	859	382	369
Transportation	294	176	930	343	406
Student Support	594	583	474	594	512
Instruction Support	196	157	338	431	470
Other	0	0	0	12	22

Proposition 301

Teacher pay

On average, each teacher earned \$11,842 in additional salary, and each instructional aide earned an additional \$3,792.

Performance pay plan goals and results

Type of goal	Goal met?
Student achievement	■
Dropout/ graduation rates	
Student attendance	■
Parent/student satisfaction	■
Teacher attendance	
Teacher professional development	■
Teacher evaluations	
Tutoring	
Other	

■ = yes, □ = no, and ▮ = partially