

Prescott Unified School District

Yavapai County
Operational peer group: C
Legislative districts: 1

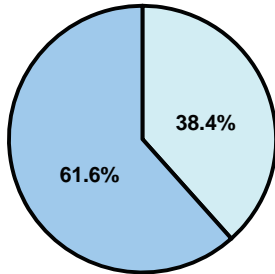
District size: Medium-Large
Students attending: 5,494
Number of schools: 9

OPERATIONAL EFFICIENCY

Average per-pupil spending

District
State

Classroom
\$4,014
\$4,497



Nonclassroom
\$2,505
\$3,411

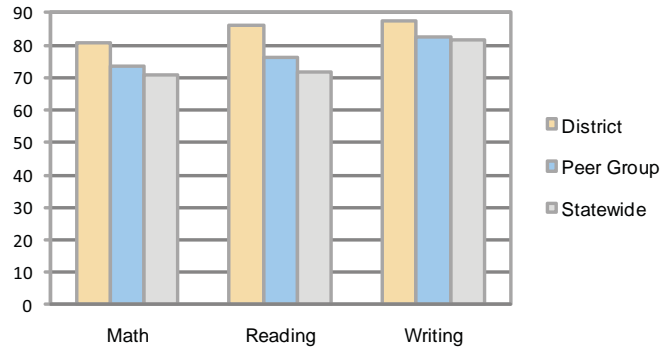
Total
\$6,519
\$7,908

5-year trend

Total spending per pupil increased by 16 percent. Spending in the classroom was fairly stable and increased slightly overall from 61.5 to 61.6 percent. Spending on plant operations increased, spending on administration and student support decreased, and spending in the other nonclassroom areas remained fairly stable.

STUDENT ACHIEVEMENT AND TEACHER INFORMATION

Percentage of students meeting state standards (AIMS)



Adequate Yearly Progress (AYP) toward federal goals

8 schools met all applicable AYP objectives for NCLB. 1 did not because it failed to meet the percentage of students tested objective.

Student and teacher information

Measure	District	Peer average	State average
Attendance rate	96%	95%	95%
Graduation rate (2008)	77%	84%	75%
Poverty rate	13%	13%	19%
Student/teacher ratio	18.1	17.5	17.1
Average teacher salary	\$43,385	\$44,052	\$45,209
Average years' experience	12.5	8.4	8.3
Percent of teachers in first 3 years	14%	30%	16%

District's cost measures relative to peer group

Operational Area	Measure	District	Peer Average	State Average
Administration	Cost per pupil	\$559	\$733	\$729
	Students per administrator	67	63	66
Plant Operations	Cost per square foot	\$5.60	\$6.20	\$6.40
	Square footage per student	136	144	144
Food Service	Cost per meal equivalent	\$3.66	\$2.79	\$2.53
Transportation	Cost per mile	\$2.55	\$3.31	\$3.36
	Miles per rider	234	230	271

Very Low Low Comparable High Very High

Proposition 301

Teacher pay

On average, each teacher, librarian, speech pathologist, counselor, and physical therapist earned between \$3,336 and \$4,457 in additional salary.

Performance pay plan goals and results

Type of goal	Goal met?
Student achievement	■
Dropout/ graduation rates	
Student attendance	
Parent/student satisfaction	■
Teacher attendance	
Teacher professional development	■
Teacher evaluations	■
Tutoring	■
Other	■

■ = yes, □ = no, and ▮ = partially

Per-pupil spending by function

	District		Peer	State	National
	2008	2009	2009	2009	2007
Total	\$6,801	\$6,519	\$7,484	\$7,908	\$9,683
Classroom dollars	\$4,228	\$4,014	\$4,298	\$4,497	\$5,903
Nonclassroom dollars:	\$2,573	\$2,505	\$3,186	\$3,411	\$3,780
Administration	580	559	733	729	1,050
Plant Operations	755	760	869	920	951
Food Service	297	318	332	382	369
Transportation	284	253	400	343	406
Student Support	438	388	543	594	512
Instruction Support	209	217	295	431	470
Other	10	10	14	12	22