

# Quartzsite Elementary School District

La Paz County

Efficiency peer groups 11 and T-11, Achievement peer group 20<sup>1</sup>

Legislative district(s): 5

District size, location:

Very small, Rural

Students attending:

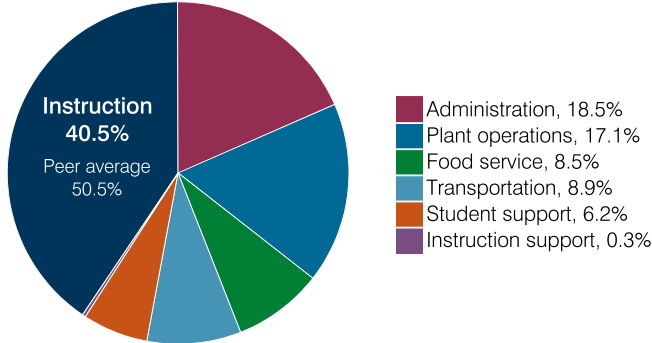
171

Number of schools:

2

## OPERATIONAL EFFICIENCY

### Spending by operational area



### Efficiency measures relative to peer averages

Operational area	Measure	District	Peer average	State average
Administration	Cost per pupil	\$1,939	\$3,064	\$860
	Students per administrative position	43	33	66
Plant operations	Cost per square foot	\$5.81	\$7.31	\$6.34
	Square footage per student	310	371	156
Food service	Cost per meal	\$3.53	\$5.79	\$3.02
Transportation	Cost per mile	\$2.45	\$1.94	\$4.05
	Cost per rider	\$1,163	\$1,614	\$1,301

### Per pupil spending

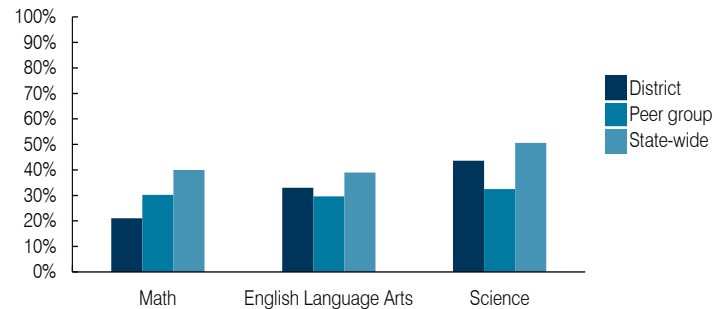
Spending by area	District		Peer average 2018	State average 2018
	2017	2018		
Instruction	\$ 4,718	\$ 4,264	\$ 8,493	\$ 4,480
Administration	2,047	1,939	3,064	860
Plant operations	1,684	1,801	2,439	988
Food service	790	898	932	425
Transportation	861	936	973	388
Student support	574	657	656	693
Instruction support	72	29	400	462
<b>Total operational</b>	<b>10,746</b>	<b>10,524</b>	<b>16,957</b>	<b>8,296</b>
Land and buildings	0	679	965	827
Equipment	451	242	562	409
Interest	7	(1)	25	228
Other	0	0	88	169
<b>Total nonoperational</b>	<b>458</b>	<b>920</b>	<b>1,640</b>	<b>1,633</b>
<b>Total per pupil spending</b>	<b>\$ 11,204</b>	<b>\$ 11,444</b>	<b>\$ 18,597</b>	<b>\$ 9,929</b>

## STUDENT ACHIEVEMENT, STUDENT AND TEACHER MEASURES, AND REVENUES

### ADE-assigned school letter grades

Grade	Number of schools	Percentage of schools
A	0	0%
B	1	50%
C	0	0%
D	1	50%
F	0	0%

### Students who passed State assessments



### Student and teacher measures

Measure	District	Peer average	State average
Attendance rate	94%	94%	94%
Graduation rate (2017)	N/A	N/A	N/A
Poverty rate (2017)	36%	39%	19%
Special education population	12%	17%	12%
Students per teacher	21.4	12.3	18.4
Average teacher salary	\$49,798	\$46,899	\$48,951
Amount from Prop 301	\$6,458	\$4,418	\$6,411
Average years of teacher experience	12.7	13.4	11.4
Percentage of teachers in first 3 years	14%	6%	19%

### Per pupil revenues

Revenues by source	District		Peer average 2018	State average 2018
	2017	2018		
Federal	\$ 1,146	\$ 1,285	\$ 3,021	\$ 1,317
State	1,635	1,690	4,788	4,011
Local	8,477	9,019	12,812	4,592
<b>Total per pupil revenues</b>	<b>\$ 11,258</b>	<b>\$ 11,994</b>	<b>\$ 20,621</b>	<b>\$ 9,920</b>

### Select revenues from common sources

Source	District	Peer average	State average
Equalization formula funding	\$ 8,171	\$ 7,104	\$ 8,282
Grants	1,146	1,977	3,020
Donations and tax credits	53	16	125

### Select revenues from less common sources

Source	District	Peer average	State average
Desegregation	\$ 0	\$ 0	0 of 56
Small school adjustment	0	0	45 of 56
Federal impact aid	0	0	5 of 56
Voter-approved levy increases	0	0	5 of 56

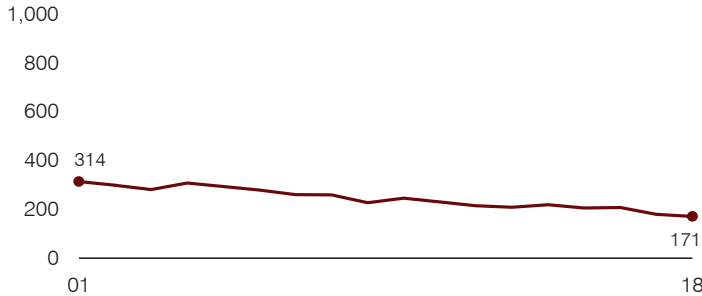
<sup>1</sup> See Appendix A for information such as districts included in each peer group and Appendix B for sources and methodology.

**Instructional spending percentage**

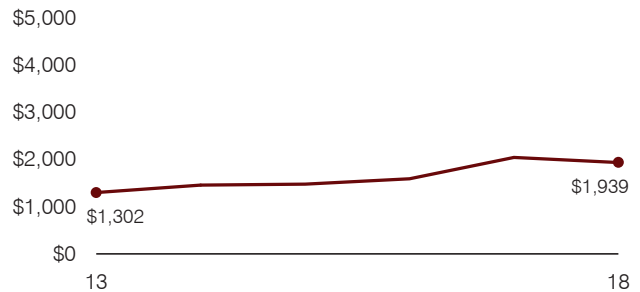
Year:	2001	2002	2003	2004	2005	2006	2007	2008	2009	2010	2011	2012	2013	2014	2015	2016	2017	2018
Percentage:	47.3	49.6	49.6	46.3	48.2	49.6	50.7	48.8	49.4	49.6	46.4	45.7	53.2	49.4	49.2	42.4	43.9	40.5

**TRENDS AND FINANCIAL STRESS ASSESSMENT**  
Fiscal years as indicated

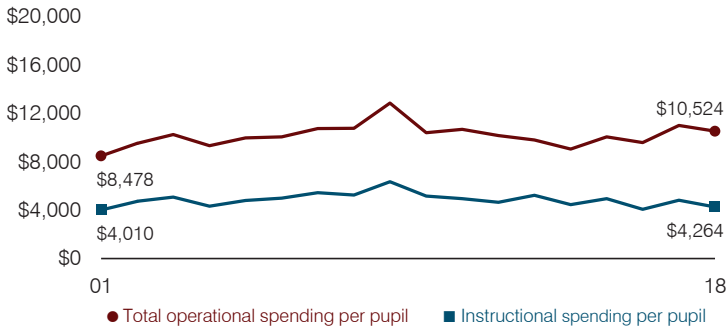
**Students attending**



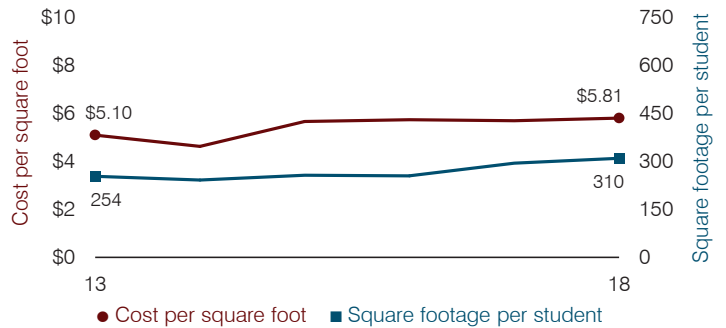
**Administrative cost per pupil**



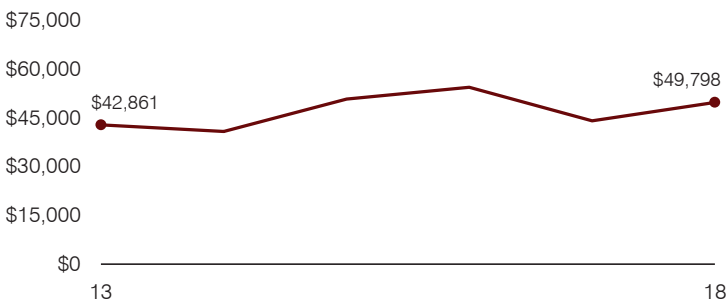
**Total operational and instructional spending per pupil (inflation adjusted to 2018 dollars)**



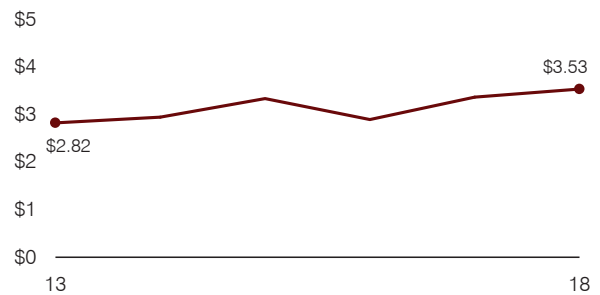
**Plant cost per square foot and square footage per student**



**Average teacher salary**



**Food service cost per meal**



**Financial stress assessment**

Overall financial stress level: **Moderate**

Measure: 2016 through 2018	Assessment
Change in number of district students	Large decrease
Spending exceeded operating/capital budgets	No overspending
Spending increase election results	No election held
Operating reserve percentage, Trend	7.1%, Decreasing
Years of capital reserve held	1 to 3 years
Current financial and internal control status	Compliant

Low
Moderate
High

**Transportation costs per mile and per rider**

