

Quartzsite Elementary School District

La Paz County
Peer groups: Efficiency Group 11, Achievement Group 19
Legislative district(s): 3 and 24

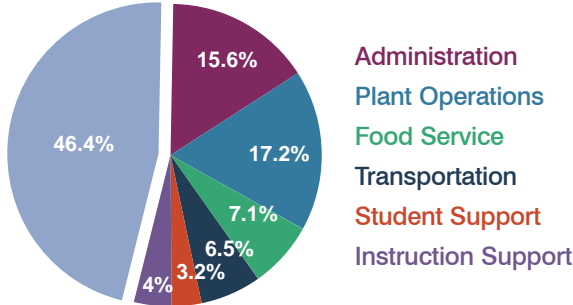
District size: Small
Students attending: 230
Number of schools: 2

OPERATIONAL EFFICIENCY

Spending by operational area

Classroom dollars

Nonclassroom dollars

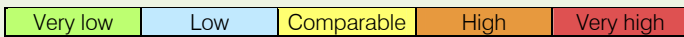


5-year trend

Total spending per pupil increased by 18 percent. Spending in the classroom varied year to year, decreasing significantly overall from 49.6 to 46.4 percent. Spending on administration and student support increased, while spending on other nonclassroom areas varied year to year.

District's cost measures relative to peer group

Operational Area	Measure	District	Peer Average	State Average
Administration	Cost per pupil	\$1,483	\$1,132	\$728
	Students per administrator	36	54	66
Plant Operations	Cost per square foot	\$7.11	\$7.44	\$6.10
	Square footage per student	231	142	152
Food Service	Cost per meal equivalent	\$2.87	\$2.63	\$2.45
Transportation	Cost per mile	\$2.77	\$2.07	\$3.39
	Miles per rider	204	259	283



Per-pupil spending by operational area

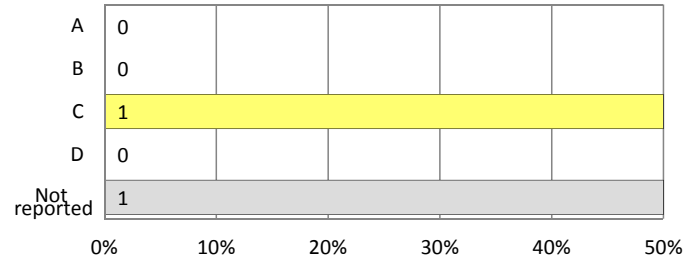
	District		Peer 2011	State 2011	National 2009
	2010	2011			
Total	\$9,087	\$9,512	\$8,149	\$7,485	\$10,591
Classroom dollars	\$4,511	\$4,411	\$4,324	\$4,098	\$6,456
Nonclassroom dollars:	\$4,576	\$5,101	\$3,825	\$3,387	\$4,135
Administration	1,391	1,483	1,132	728	1,147
Plant Operations	1,491	1,641	1,013	927	1,033
Food Service	658	674	496	375	404
Transportation	646	620	443	352	443
Student Support	119	302	486	571	573
Instruction Support	271	381	255	434	535

STUDENT ACHIEVEMENT AND TEACHER INFORMATION

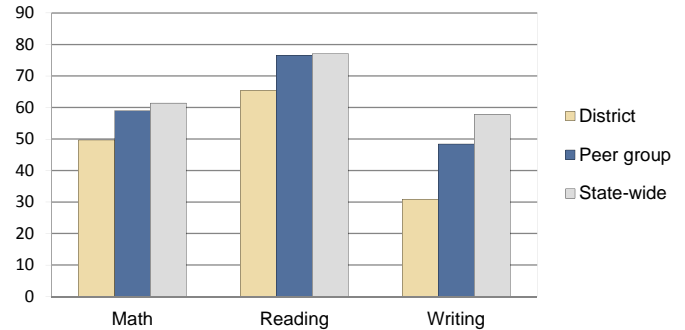
District and school letter grades

District grade: **C**

School grades (number and percentage):



Percentage of students meeting state standards (AIMS)



Student and teacher information

Measure	District	Peer Average	State Average
Attendance rate	94%	95%	95%
Graduation rate (2010)	N/A	N/A	N/A
Poverty rate (2010)	22%	24%	22%
Students per teacher	15.3	12.4	18.1
Average teacher salary	\$40,066	\$45,745	\$45,637
Average years of experience	8.1	12.9	10.9
Percent of teachers in first 3 years	13%	16%	16%

Proposition 301 pay, goals, and results

Average additional salary earned by teachers: \$3,180

Type of goal	Goal met?
Student achievement	■
Dropout/graduation rates	-
Student attendance	■
Parent/student satisfaction	-
Teacher attendance	■
Teacher professional development	■
Teacher evaluations	■
Tutoring	-
Other	-

■ = yes, □ = no, ▴ = partially, and - = no goal set