

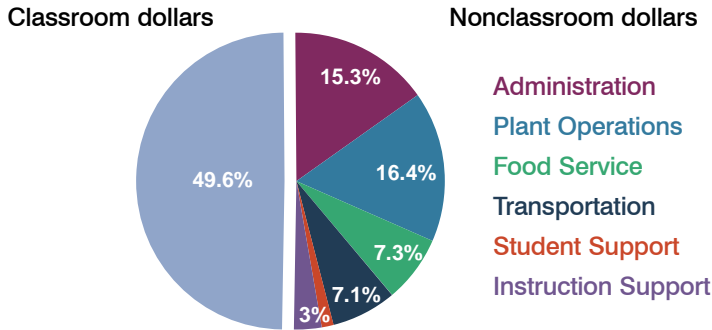
Quartzsite Elementary School District

La Paz County
Peer groups: Efficiency 11, Achievement 6
Legislative district(s): 3 and 24

District size: Small
Students attending: 246
Number of schools: 2

OPERATIONAL EFFICIENCY

Spending by function

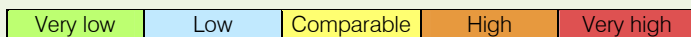


5-year trend

Total spending per pupil increased by 18 percent. Spending in the classroom varied year to year, increasing overall from 48.2 to 49.6 percent. Spending in transportation decreased, while spending in other nonclassroom areas remained fairly stable.

District's cost measures relative to peer group

Operational Area	Measure	District	Peer Average	State Average
Administration	Cost per pupil	\$1,391	\$1,128	\$721
	Students per administrator	NR	68	66
Plant Operations	Cost per square foot	\$6.56	\$7.21	\$6.25
	Square footage per student	227	148	146
Food Service	Cost per meal equivalent	\$2.97	\$2.70	\$2.41
Transportation	Cost per mile	\$2.94	\$2.00	\$3.35
	Miles per rider	251	222	282

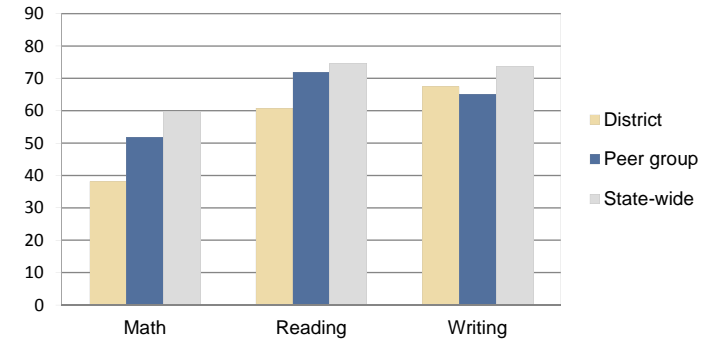


Per-pupil spending by function

	District		Peer 2010	State 2010	National 2008
	2009	2010			
Total	\$11,112	\$9,087	\$8,569	\$7,609	\$10,297
Classroom dollars	\$5,491	\$4,511	\$4,716	\$4,253	\$6,262
Nonclassroom dollars:	\$5,621	\$4,576	\$3,853	\$3,356	\$4,035
Administration	1,913	1,391	1,128	721	1,109
Plant Operations	1,756	1,491	1,025	914	1,003
Food Service	807	658	484	366	390
Transportation	819	646	389	342	438
Student Support	127	119	553	581	556
Instruction Support	199	271	274	432	539

STUDENT ACHIEVEMENT AND TEACHER INFORMATION

Percentage of students meeting state standards (AIMS)



Adequate Yearly Progress (AYP) toward federal goals

2 schools met all applicable AYP objectives for NCLB.

Student and teacher information

Measure	District	Peer Average	State Average
Attendance rate	94%	94%	94%
Graduation rate (2009)	N/A	N/A	76%
Poverty rate (2009)	26%	27%	21%
Student/teacher ratio	15.4	13.1	17.9
Average teacher salary	\$42,135	\$42,747	\$47,077
Average years' experience	7.4	13.8	10.6
Percent of teachers in first 3 years	19%	9%	20%

Proposition 301

Teacher and other staff pay

On average, each teacher earned \$5,382 in additional pay.

Performance pay plan goals and results

Type of goal	Goal met?
Student achievement	■
Dropout/graduation rates	-
Student attendance	■
Parent/student satisfaction	-
Teacher attendance	-
Teacher professional development	▲
Teacher evaluations	■
Tutoring	-
Other	-

■ = yes, □ = no, ▲ = partially, and - = no goal set