

Queen Creek Unified School District

Maricopa County
Operational peer group: C
Legislative districts: 21, 22

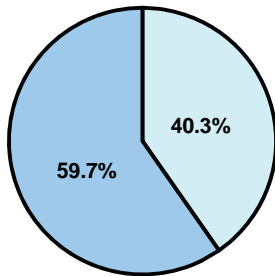
District size: Medium-Large
Students attending: 5,168
Number of schools: 7

OPERATIONAL EFFICIENCY

Average per-pupil spending

District
State

Classroom
\$4,019
\$4,497



Nonclassroom
\$2,715
\$3,411

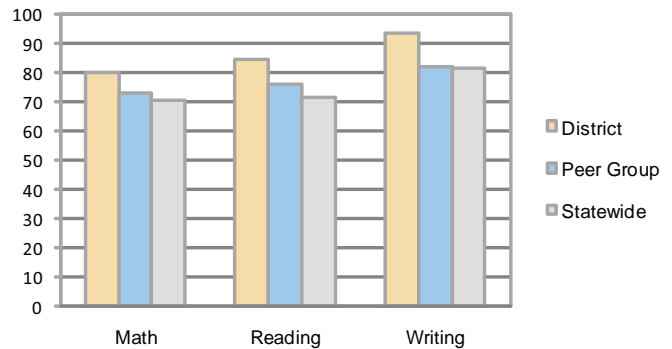
Total
\$6,734
\$7,908

5-year trend

Student enrollment more than doubled, which contributed to the increase of only 3 percent in total spending per pupil. Spending in the classroom varied year to year and increased significantly overall from 52.7 to 59.7 percent. Spending on transportation and student support remained stable, while spending in other nonclassroom areas decreased.

STUDENT ACHIEVEMENT AND TEACHER INFORMATION

Percentage of students meeting state standards (AIMS)



Adequate Yearly Progress (AYP) toward federal goals

5 schools met all applicable AYP objectives for NCLB. 2 did not because some students did not demonstrate sufficient academic progress.

Student and teacher information

Measure	District	Peer average	State average
Attendance rate	95%	95%	95%
Graduation rate (2008)	88%	84%	75%
Poverty rate	9%	13%	19%
Student/teacher ratio	19.0	17.5	17.1
Average teacher salary	\$43,763	\$44,052	\$45,209
Average years' experience	7.4	8.4	8.3
Percent of teachers in first 3 years	17%	30%	16%

District's cost measures relative to peer group

Operational Area	Measure	District	Peer Average	State Average
Administration	Cost per pupil	\$638	\$733	\$729
	Students per administrator	72	63	66
Plant Operations	Cost per square foot	\$6.42	\$6.20	\$6.40
	Square footage per student	119	144	144
Food Service	Cost per meal equivalent	\$1.86	\$2.79	\$2.53
Transportation	Cost per mile	\$2.71	\$3.31	\$3.36
	Miles per rider	242	230	271

Very Low Low Comparable High Very High

Per-pupil spending by function

	District		Peer	State	National
	2008	2009	2009	2009	2007
Total	\$6,409	\$6,734	\$7,484	\$7,908	\$9,683
Classroom dollars	\$3,889	\$4,019	\$4,298	\$4,497	\$5,903
Nonclassroom dollars:	\$2,520	\$2,715	\$3,186	\$3,411	\$3,780
Administration	637	638	733	729	1,050
Plant Operations	674	761	869	920	951
Food Service	318	348	332	382	369
Transportation	341	348	400	343	406
Student Support	419	431	543	594	512
Instruction Support	131	189	295	431	470
Other	0	0	14	12	22

Proposition 301

Teacher pay

On average, each teacher earned \$4,173 in additional salary, and each librarian, speech pathologist, counselor, psychologist, therapist, nurse, athletic trainer, and social worker earned between \$2,297 and \$4,297.

Performance pay plan goals and results

Type of goal	Goal met?
Student achievement	■
Dropout/ graduation rates	
Student attendance	
Parent/student satisfaction	■
Teacher attendance	
Teacher professional development	■
Teacher evaluations	■
Tutoring	
Other	

■ = yes, □ = no, and ▲ = partially