

# Ray Unified School District

Pinal County

Efficiency peer groups 6 and T-10, Achievement peer group 5<sup>1</sup>

Legislative district(s): 8

District size, location:

Small, Rural

Students attending:

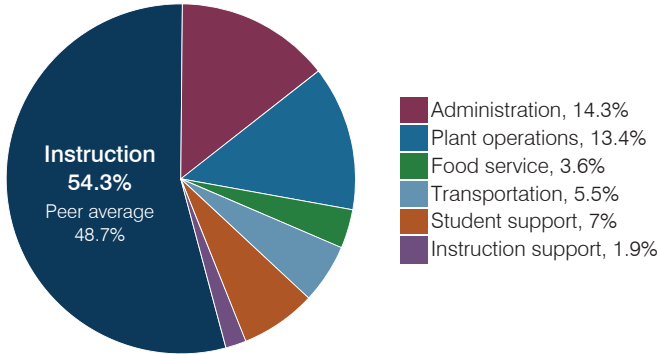
414

Number of schools:

2

## OPERATIONAL EFFICIENCY

### Spending by operational area



### Efficiency measures relative to peer averages

Operational area	Measure	District	Peer average	State average
Administration	Cost per pupil	\$1,413	\$1,784	\$844
	Students per administrative position	38	44	67
Plant operations	Cost per square foot	\$2.86	\$4.85	\$6.30
	Square footage per student	462	348	155
Food service	Cost per meal	\$4.19	\$3.70	\$2.88
Transportation	Cost per mile	\$2.42	\$1.93	\$3.84
	Cost per rider	\$1,727	\$1,267	\$1,198

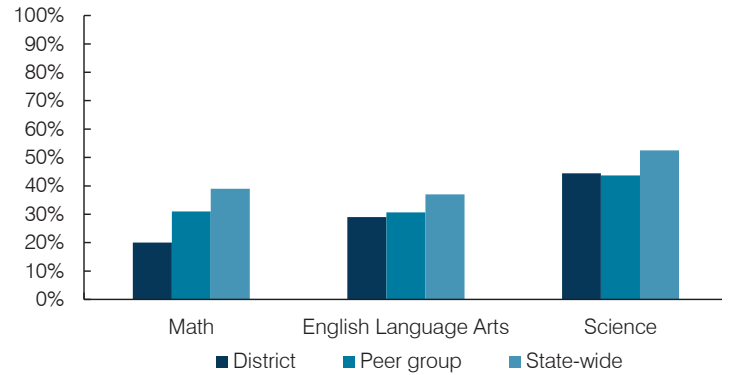
Very low   Low   Comparable   High   Very high

### Per pupil spending

Spending by area	District		Peer average 2017	State average 2017
	2016	2017		
Instruction	\$ 5,130	\$ 5,358	\$ 5,470	\$ 4,377
Administration	1,290	1,413	1,784	844
Plant operations	1,354	1,322	1,587	977
Food service	358	358	534	422
Transportation	469	538	571	381
Student support	699	693	642	679
Instruction support	172	186	423	461
<b>Total operational</b>	<b>\$ 9,472</b>	<b>\$ 9,868</b>	<b>\$ 11,011</b>	<b>\$ 8,141</b>
Land and buildings	\$ 558	\$ 130	\$ 437	\$ 691
Equipment	330	285	479	424
Interest	42	22	179	236
Other	24	24	45	161
<b>Total nonoperational</b>	<b>\$ 954</b>	<b>\$ 461</b>	<b>\$ 1,140</b>	<b>\$ 1,512</b>
<b>Total per pupil spending</b>	<b>\$ 10,426</b>	<b>\$ 10,329</b>	<b>\$ 12,151</b>	<b>\$ 9,653</b>

## STUDENT ACHIEVEMENT, STUDENT AND TEACHER MEASURES, AND REVENUES

### Students who passed state assessments



### Student and teacher measures

Measure	District	Peer average	State average
Attendance rate	94%	93%	94%
Graduation rate (2016)	89%	85%	80%
Poverty rate (2016)	23%	24%	22%
Special education population	11%	13%	12%
Students per teacher	13.8	17.0	18.5
Average teacher salary	\$45,363	\$44,553	\$48,372
Amount from Prop 301	\$6,011	\$5,512	\$5,840
Average years of teacher experience	18.4	12.8	11.3
Percentage of teachers in first 3 years	10%	16%	19%

### Per pupil revenues

Revenues by source	District		Peer average 2017	State average 2017
	2016	2017		
Federal	\$ 1,517	\$ 1,238	\$ 2,411	\$ 1,318
State	4,507	3,628	3,824	3,831
Local	3,573	5,662	7,054	4,443
<b>Total per pupil revenues</b>	<b>\$ 9,597</b>	<b>\$ 10,528</b>	<b>\$ 13,289</b>	<b>\$ 9,592</b>

#### Select revenues from common sources

	District	Peer average	State average
Equalization formula funding	\$ 6,955	\$ 7,019	\$ 7,159
Amount from Prop 123	266	285	285
Prop 123 additional funding	53	56	57
Grants	2,025	1,310	1,876
Donations and tax credits	90	88	246

#### Select revenues from less common sources

	District	Peer average	State average
Desegregation	\$ 0	\$ 0	0 of 20
Small school adjustment	0	0	4 of 20
Federal impact aid	0	0	5 of 20
Voter-approved levy increases	1,221	1,336	15 of 20

<sup>1</sup> See Appendix A for information such as districts included in each peer group and Appendix B for sources and methodology.

**Instructional spending percentage**

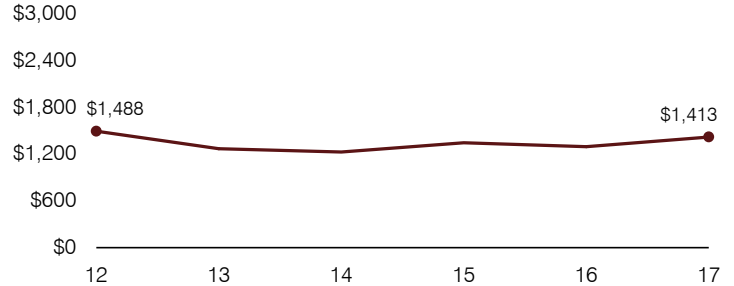
Year:	2001	2002	2003	2004	2005	2006	2007	2008	2009	2010	2011	2012	2013	2014	2015	2016	2017
Percentage:	55.0	57.3	57.3	58.3	59.2	55.4	57.5	55.5	54.5	55.8	52.1	51.8	54.9	54.0	52.9	54.2	54.3

**OPERATIONAL TRENDS AND FINANCIAL STRESS ASSESSMENT**  
Fiscal years as indicated

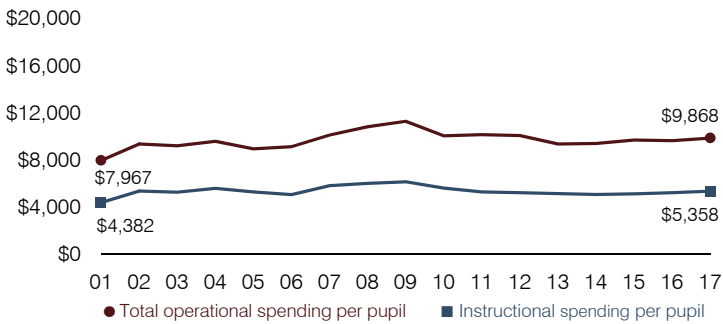
**5-year spending trend (2012 through 2017)**

Total operational spending per pupil, adjusted for inflation, decreased by 2 percent. The percentage of dollars spent on instruction varied year to year, increasing overall from 51.8 to 54.3 percent. Overall, as a percentage of total operational spending, plant operations decreased substantially and administration decreased, while student support increased. Other noninstructional areas remained fairly stable.

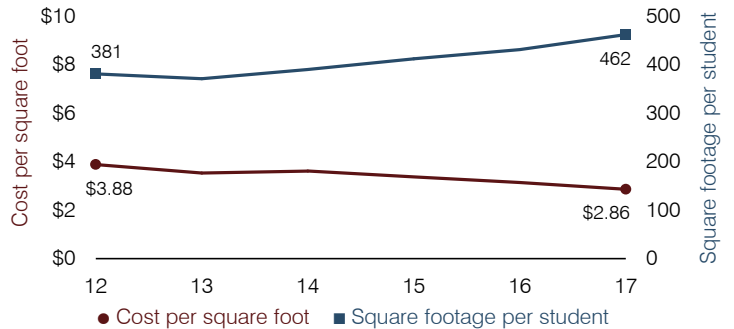
**Administrative cost per pupil**



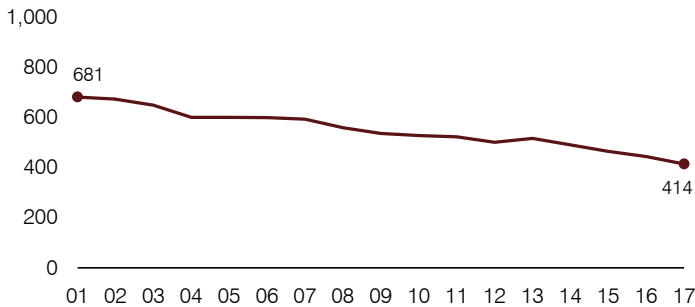
**Total operational and instructional spending per pupil (inflation adjusted to 2017 dollars)**



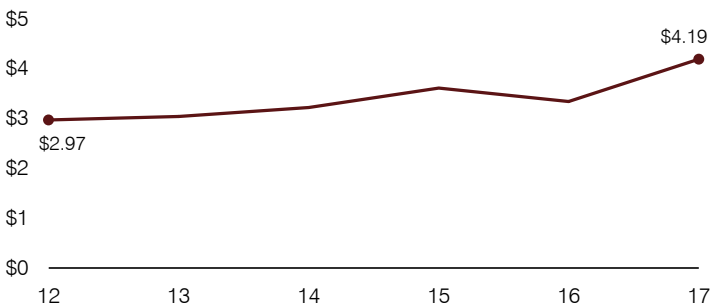
**Plant cost per square foot and square footage per student**



**Students attending**



**Food service cost per meal**



**Financial stress assessment**

Overall financial stress level:

**Low**

Measure: 2015 through 2017

Assessment

Change in number of district students	Moderate decrease
Spending exceeded operating/capital budgets	No overspending
Spending increase election results	Voter-approved
Operating reserve percentage, Trend	10.6%, Increasing
Years of capital reserve held	1 to 3 years
Current financial and internal control status	Compliant

Low

Moderate

High

**Transportation costs per mile and per rider**

